



Marsh Street, Warminster

Offers in excess of £275,000



## Key Features

- Character Property
- Fire Place
- Garage/Driveway
- 3 Bedrooms
- EPC rating D
- Freehold





Set in a peaceful and tucked-away position, this charming 3 bedroom home offers far more space than you might expect.

appealing combination that enhances everyday living.

The generous lounge provides plenty of room for both comfortable seating and a dining area, creating a versatile setting for everyday living or entertaining.

Overall, this is a standout home full of charm, functionality, and inviting spaces—one that's truly ready to be enjoyed and effortlessly easy to fall in love with.



A cosy fireplace takes center stage, adding instant warmth, character, and a welcoming atmosphere that makes the room feel like the heart of the home.

The modern downstairs bathroom is finished in a contemporary style, offering convenience and comfort, while the separate toilet adds an extra layer of practicality for busy households or visiting guests.

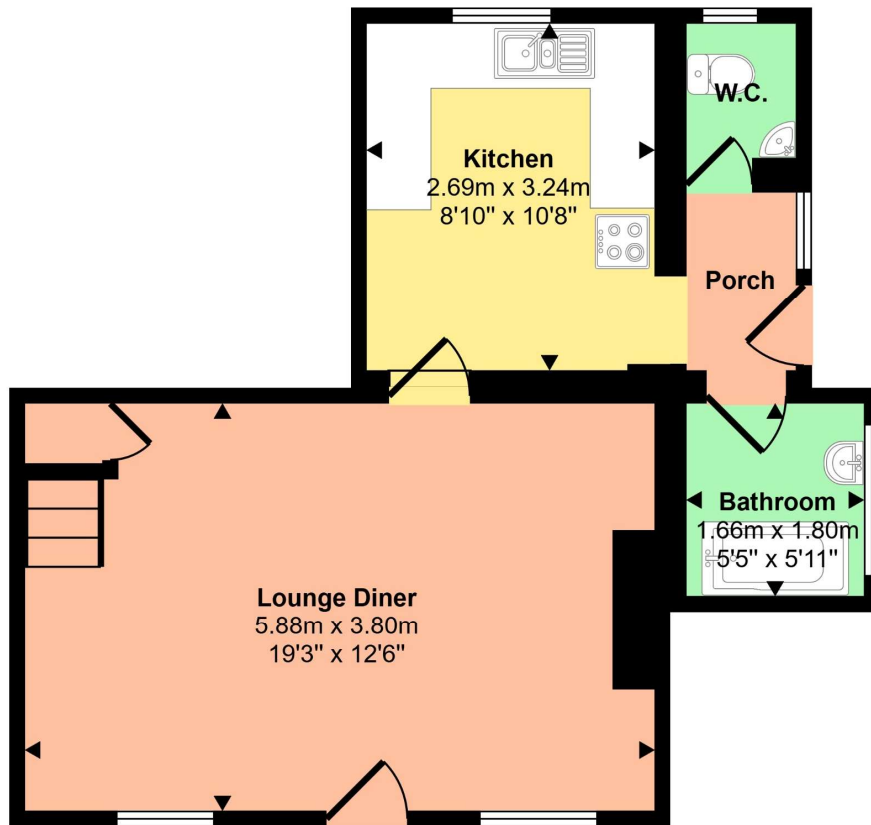


Step outside to discover a beautifully maintained garden, thoughtfully arranged to create a relaxing outdoor sanctuary. It's an ideal spot for unwinding in the sunshine, hosting summer gatherings, or simply enjoying the tranquillity of this quiet location. With the added benefit of a garage and driveway, you'll enjoy both secure storage and easy parking—an

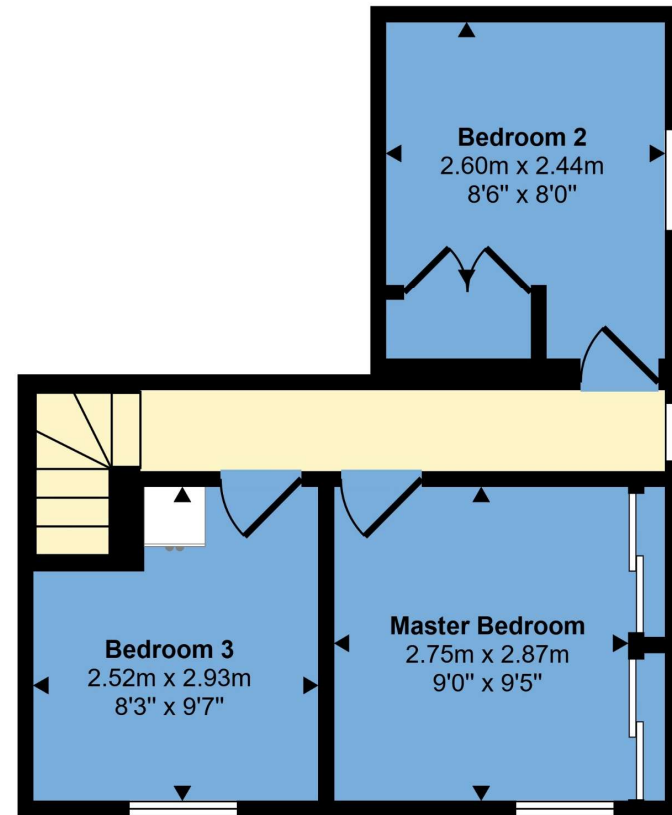




Approx Gross Internal Area  
71 sq m / 765 sq ft



Ground Floor  
Approx 40 sq m / 434 sq ft



First Floor  
Approx 31 sq m / 331 sq ft

This floorplan is only for illustrative purposes and is not to scale. Measurements of rooms, doors, windows, and any items are approximate and no responsibility is taken for any error, omission or mis-statement. Icons of items such as bathroom suites are representations only and may not look like the real items. Made with Made Snappy 360.

