



## Grosvenor Road, SW1V

£890,000

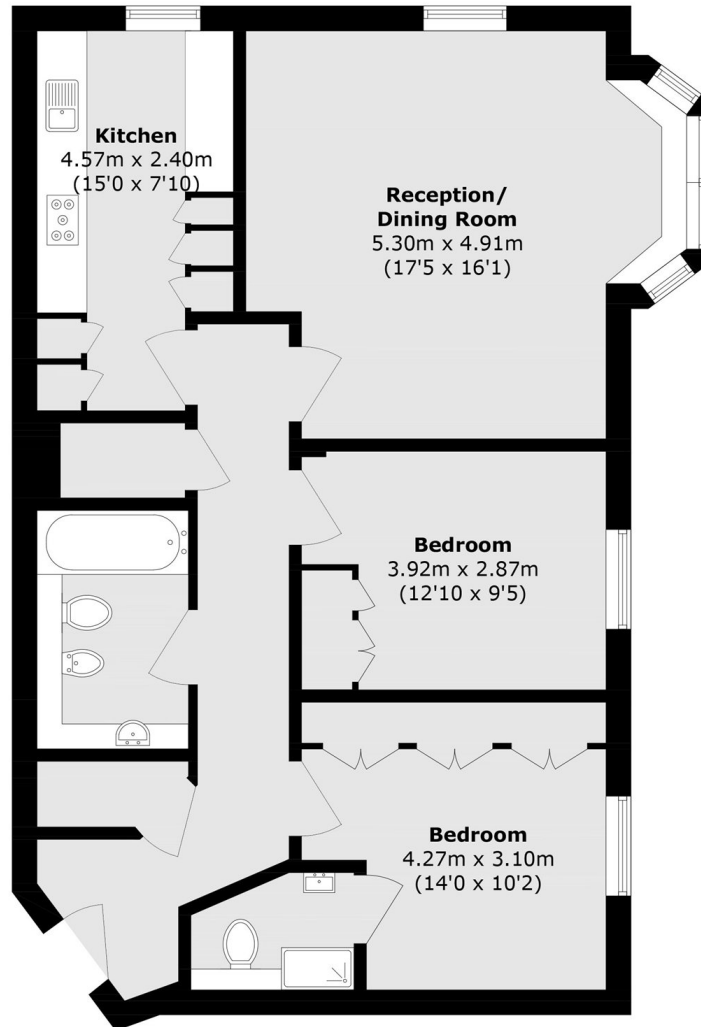
A spacious two bedroom, two bathroom lateral apartment on the second floor of a portered block. The property benefits from a bright reception room, a separate modern kitchen, ample storage and parking. This property would make a wonderful home or investment.

Millennium House is located on Grosvenor Road in Pimlico, close to the River Thames. Pimlico tube station is a short walk away for quick links to Victoria and Oxford Circus.

### Features

- Two Bedrooms
- Two Bathrooms
- Separate Modern Kitchen
- Bright
- Concierge
- Private Parking
- River Thames
- Pimlico Station

# Grosvenor Road, London, SW1V



## Second Floor

Total area (approx.): 80.4 sq. m (865.4 sq. ft)