



HARBOUR WAY, E14

£800,000

A spacious two bedroom, two bathroom apartment in the popular Maine Tower. This property provides plenty of natural light and far-reaching views from the floor-to-ceiling windows throughout, a modern kitchen with high spec appliances, two large bedrooms, one with en suite, and a family bathroom.

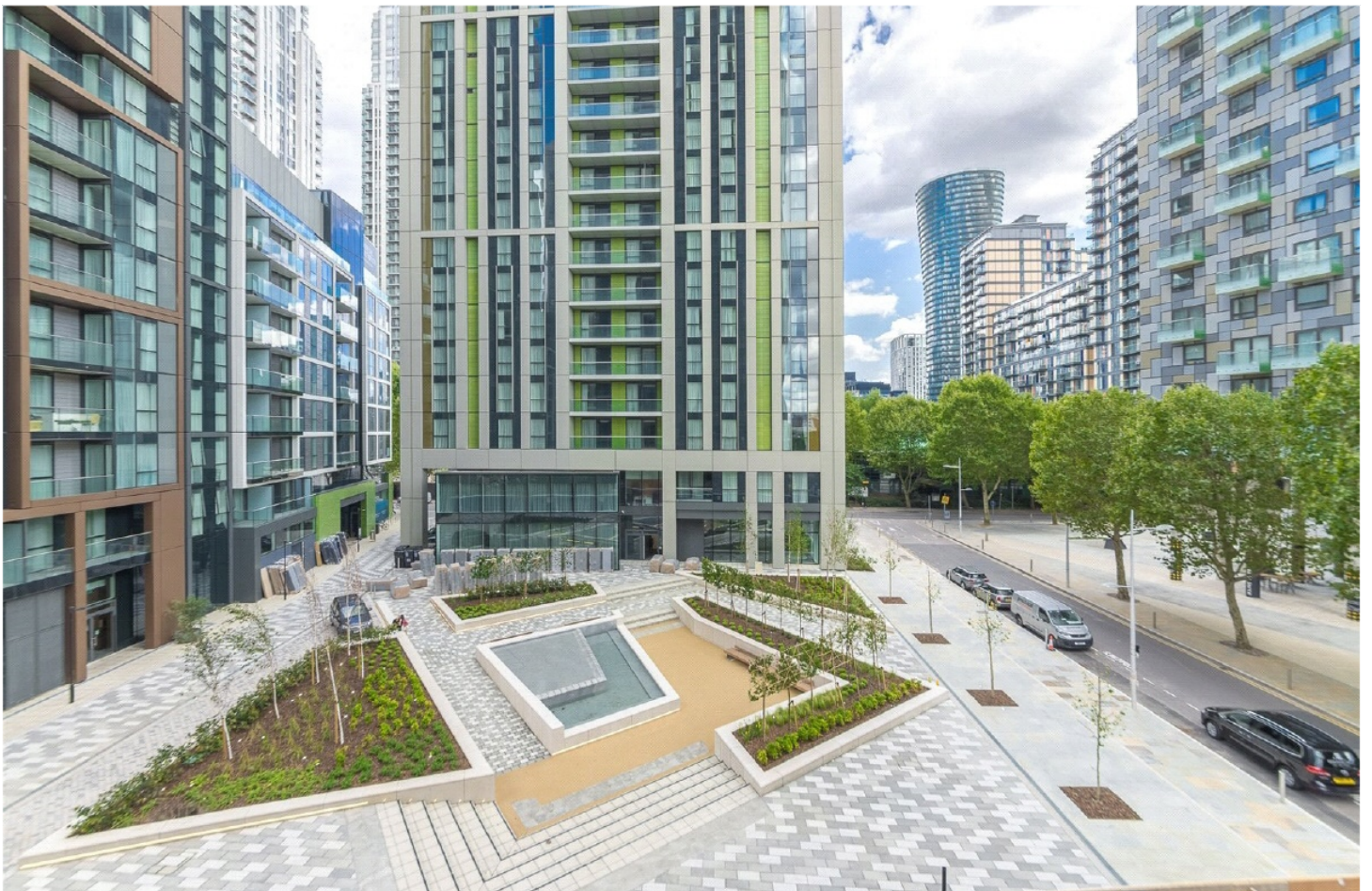
- Two Bedroom
- 24 Hour Concierge
- Parking
- Lease Length 990 Years
- Ground Rent £450
- Service Charge £7,600

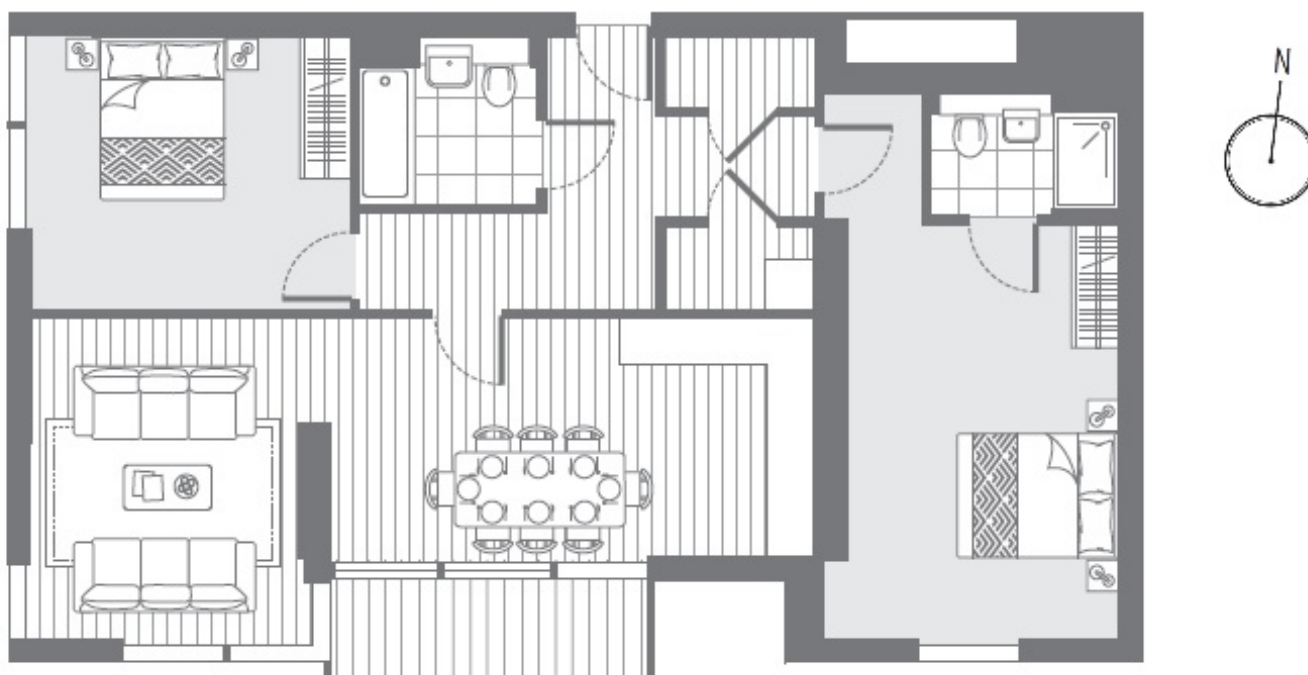


ABOUT THE HOME

Maine Tower is located central to Canary Wharf with a selection of restaurants, bars and entertainment venues within easy reach. Travel is ideal for commuters via the Elizabeth line, Jubilee line and DLR.







LiFE RESIDENTIAL

36 Millharbour, London, E14

9JS

Sales: 020 3668 1033

Lettings: 020 3668 1030

Energy Rating: B. We aim to make our particulars both accurate and reliable. However they are not guaranteed; nor do they form part of an offer or contract. If you require clarification on any points then please contact us, especially if you're traveling some distance to view. Please note that appliances and heating systems have not been tested and therefore no warranties can be given as to their good working order.