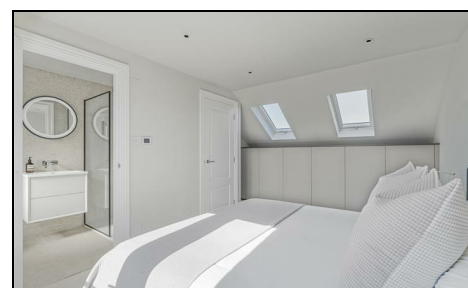


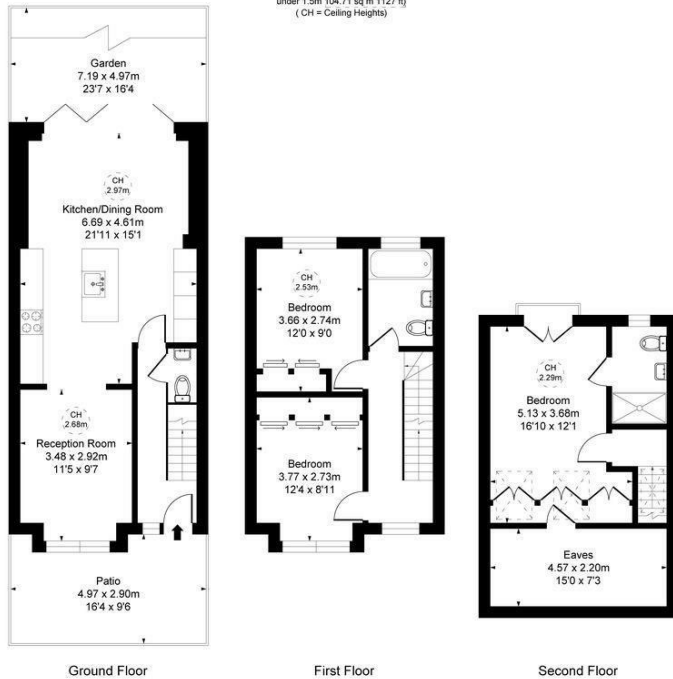
**Clifton Park Avenue
Raynes Park, SW20 8BB**

£1,100,000 Freehold



A truly exceptional three double bedroom, two bathroom Edwardian Apostle house, fully renovated to an outstanding standard and ideally positioned just 0.1 miles from Raynes Park Station and High Street. Offered with no onward chain, the property combines period character with a high-quality contemporary finish, generous proportions and a beautifully landscaped southwest-facing garden.

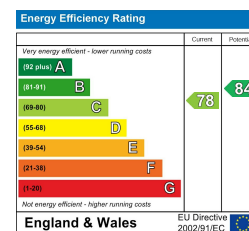
Clifton Park Avenue, SW20
 Approximate Gross Internal Area
 114.76 sq m / 1235 sq ft
 (Excluding restricted height
 under 1.5m 104.71 sq m 1127 sq ft)
 (CH = Ceiling Heights)



This plan is not to scale. It is for guidance and not for valuation purposes.
 All measurements and areas are approximate only, and have been prepared in accordance with the current edition of the RICS Code of Measuring Practice.



- Three Double Bedroom - Two Bathroom - 1,235 sqft
- Truly Exceptional, Fully Renovated Edwardian Apostle House
- Only 0.1 Miles From Raynes Park Station & High Street
- Stunning Open Plan Ground Floor With High Specification Kitchen
- Bi Folding Doors, Herringbone Oak Flooring, Downstairs W.C
- Fantastic Landscaped West Facing Garden
- Fabulous Master Bedroom With En-Suite Shower Room
- No Onward Chain
- EPC - C
- Council Tax Band - D



For Free Mortgage Quote and Best Mortgage Rates, call Ellisons Mortgage Advisor on 0208 944 9595



Although these particulars are believed to be correct, their accuracy is not guaranteed and they do not form part of any contract.

Celebrating 30 years of successful Sales and Lettings in Merton

