
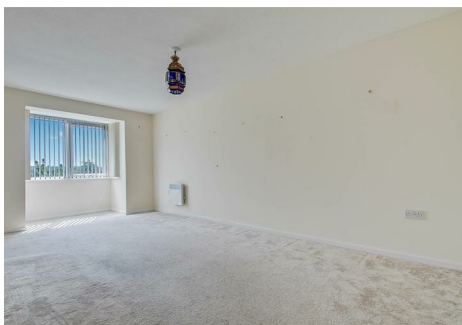


est 1979

 Jeremy  
Leaf & Co.



Stokes Court , Diploma Avenue N2

£175,000

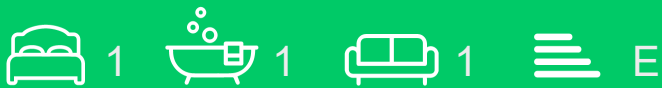
- Double Bedroom
- Communal Lounge
- On Site Warden
- 21' Reception Room
- Passenger Lifts
- 59 year lease
- Chain Free
- Residents Parking

98 High Road, London, N2 9EB  
020 8444 5222

eastfinchley@jeremyleaf.co.uk  
<https://www.jeremyleaf.co.uk/>

# London, N2 8NX

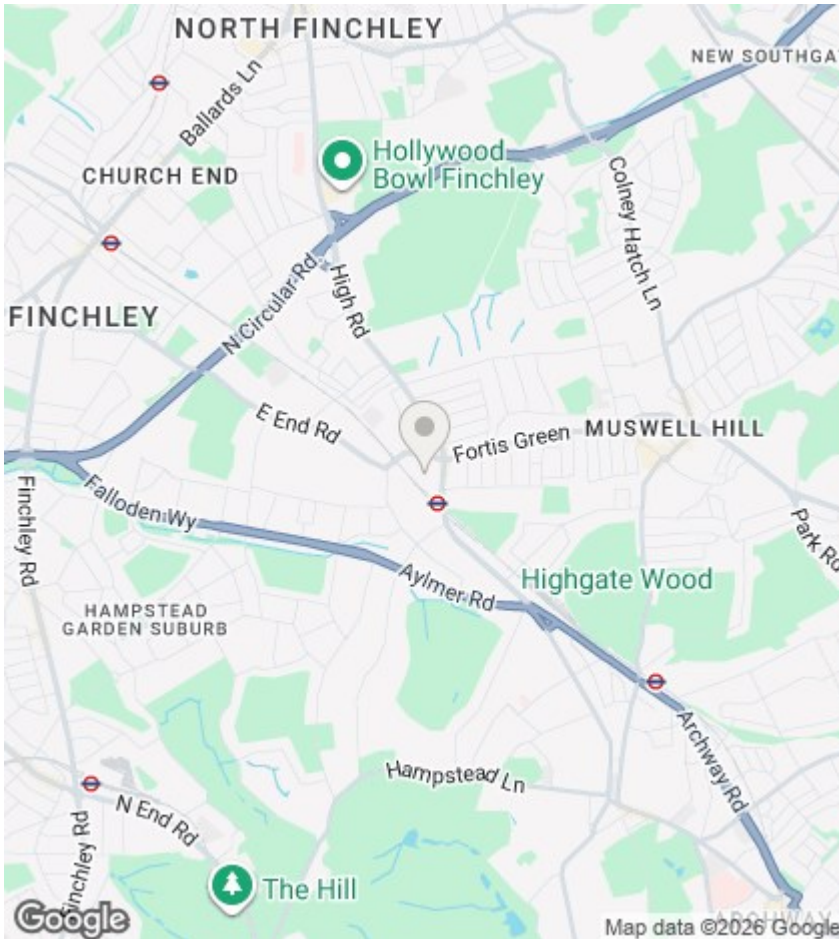
Of interest to over 60 year olds only, we offer this well presented one double bedroom purpose built apartment situated on the third floor of this ever popular RETIREMENT block. Located within minutes of East Finchley underground station and all local amenities, the property further benefits from off street parking, two passenger lifts and has access to communal lounge/dining room/ outside patio area, and two on site wardens. Offered chain free.



Council Tax Band: C







## Directions

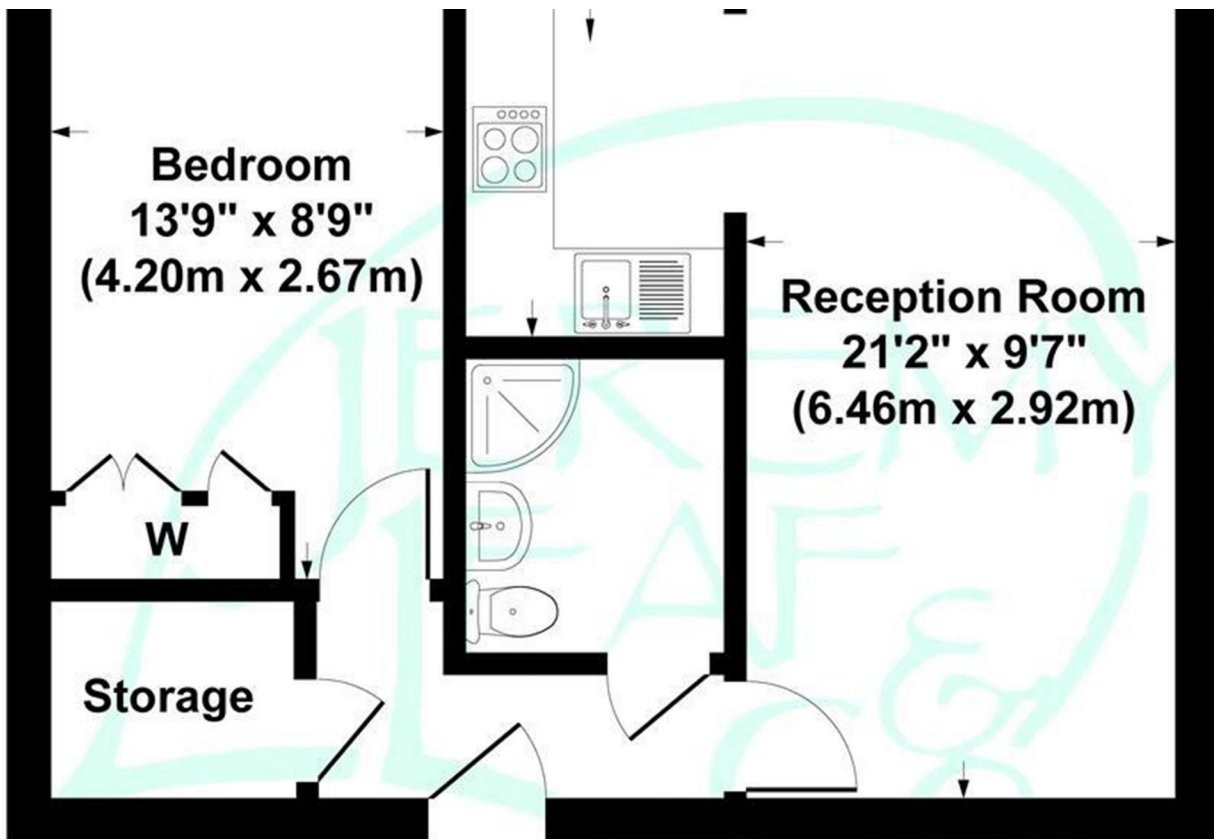
## Viewings

Viewings by arrangement only. Call 020 8444 5222 to make an appointment.

## EPC Rating:

E

Energy Efficiency Rating		Current	Potential
Very energy efficient - lower running costs			
(92 plus) A			
(81-91) B			
(69-80) C			79
(55-68) D			
(39-54) E		50	
(21-38) F			
(1-20) G			
Not energy efficient - higher running costs			
England & Wales		EU Directive 2002/91/EC	



**Third Floor**