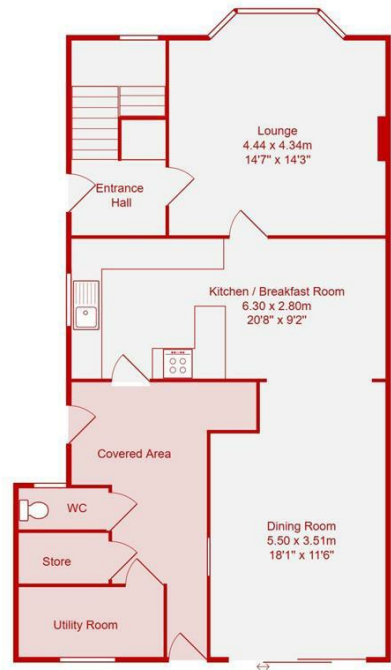


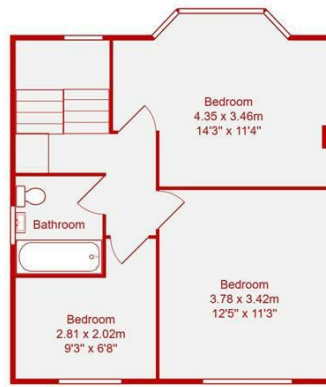
- Large Extended Semi Detached House
- Large Rear Garden With Home Office
- Potential To Extend (STP)
- Very Popular Benfield/Foredown Location
- Extended Downstairs Dining Room
- Private Off Street Parking For Two Cars
- Three Bedrooms
- No Onward Chain
- Large Kitchen Breakfast Room
- Must Be Viewed To Be Appreciated

Millcross Road, Portslade, Brighton

Price: £450,000 Freehold



Ground Floor
Area: 62.0 m² ... 667 ft²



First Floor
Area: 44.0 m² ... 473 ft²



Total Area: 106.0 m² ... 1141 ft²
(Excluding Covered Area)

All measurements are approximate and for display purposes only.

The Benfield district of Portslade is a well-regarded residential area on the northern edge of the town, offering a great balance between town convenience and easy access to open green space. Running up towards the South Downs, the area enjoys a slightly elevated setting with many homes benefiting from far-reaching views and a quieter, more suburban feel.

The location is particularly popular with families, with a number of well-regarded schools close by, including Downs Park School and Hill Park School, both situated directly on or near Foredown Road, making day-to-day schooling easily accessible.

For everyday amenities, Boundary Road and Station Road are within easy reach, offering a wide range of independent shops, cafés, supermarkets and essential services. Larger retail options, including superstores and additional shopping facilities, are also close by, ensuring everything needed is within easy reach.

Transport links are excellent. Regular bus services run nearby, providing direct routes into Brighton city centre, while Portslade railway station offers mainline connections to Brighton, Gatwick and London, making the area ideal for commuters. Road users benefit from easy access to the A270 and A27, connecting to surrounding areas and beyond.

One of the key draws of the area is its proximity to green space. The South Downs are just moments away, offering excellent walking routes and open spaces, while local parks, including Easthill Park and Victoria Park, are also nearby. The historic Foredown Tower adds a unique local landmark and highlights the area's character and heritage.

Overall, Millcross Road offers a strong mix of family-friendly living, good schooling, and excellent connectivity, all within a setting that feels slightly removed from the busier coastal areas — making it a consistently popular choice for buyers.

