

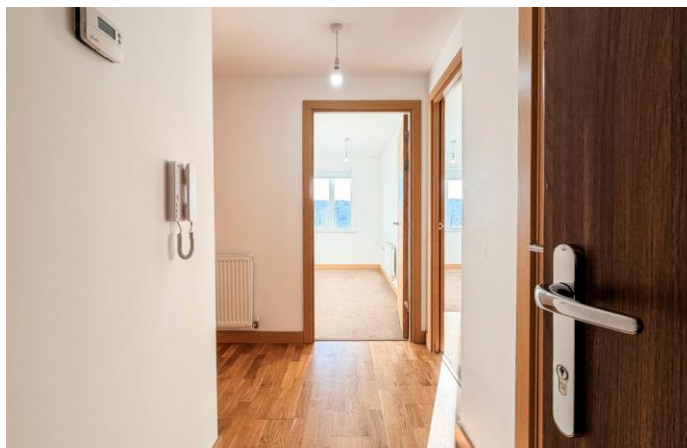




Steven Oates are delighted to offer for rental this stunning two bedroom apartment in Smeaton Court, Hertford.

The property offers well apportioned accommodation to include a modern open plan living area with fitted kitchen, two bedrooms and family bathroom. The property also offers underground secure car park with allocated space.

The property is conveniently located for a walk along the tow path into the centre and is also within a few minutes walk to Hertford East Station with regular direct service into London Liverpool Street.

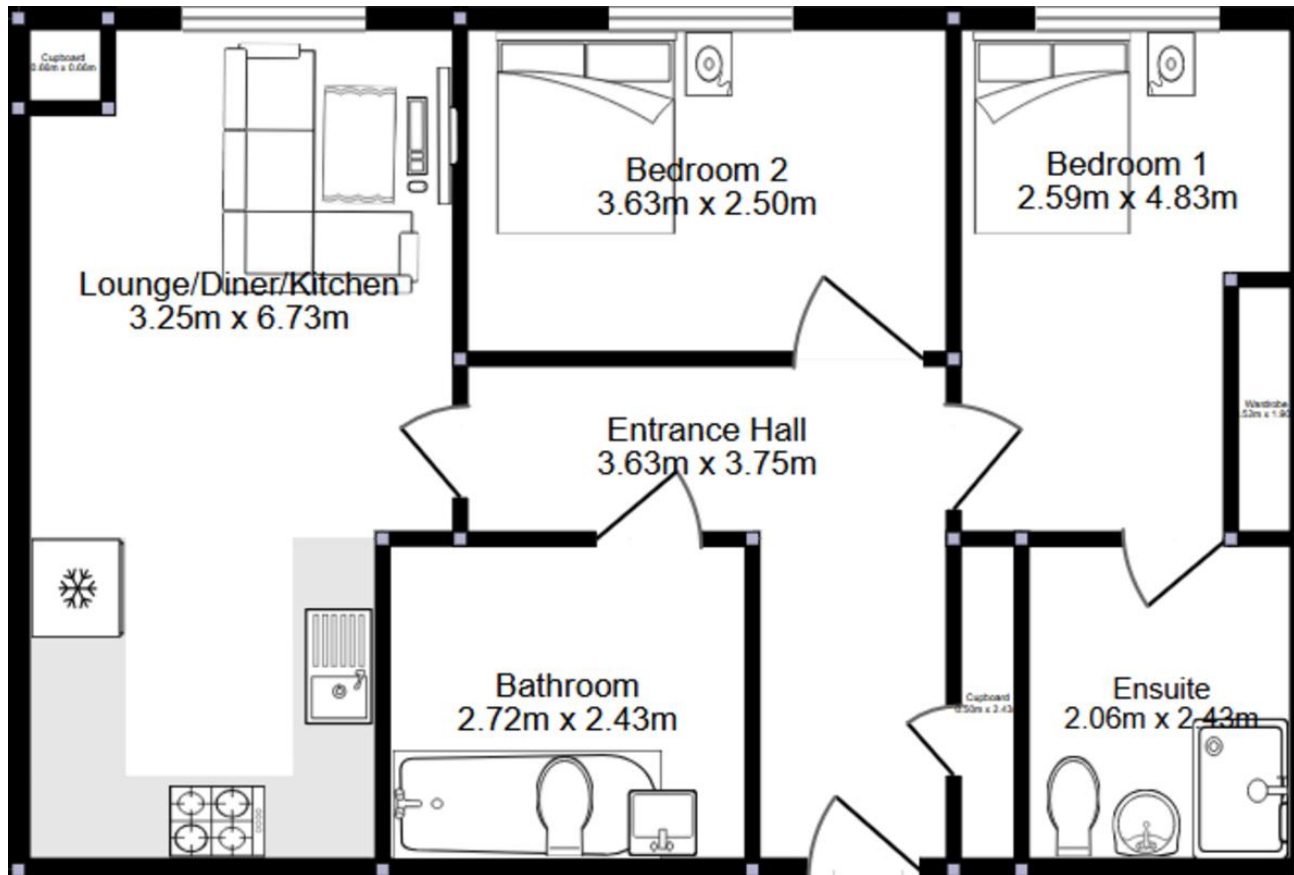














Whilst we endeavour to make our sales particulars fair, accurate and reliable, they are only intended as a general guide to the property. Measurements and distances are approximate. These particulars do not form part of any offer or contract. If there are important matters that are likely to affect your decision to buy, please contact us before viewing the property. Please note that we have not tested the services, equipment or appliances in this property, accordingly, we advise prospective buyers to commission their own survey or service reports before finalising any offer to purchase.