





Ground Floor

Entrance Porch

Having a double glazed front entrance door, double glazed windows to the front aspects, storage space and tiled flooring

Entrance Hallway

Having laminate flooring, ceiling light point, stairs to first floor and doors to:

Lounge

15' 5" x 10' 6" (4.70m x 3.20m)

Having a double glazed window to the front aspect, radiator, ceiling light point and laminate flooring

Kitchen

15' 9" x 13' 5" (4.80m x 4.09m)

Being a fitted kitchen with a range of wall, base and drawer units with laminate work surfaces over and having a sink/drain, dual oven, extractor fan, plumbing for the washing machine, space for appliances, radiator, ceiling light point, pantry, laminate flooring and two double glazed windows

Conservatory

14' 5" x 6' 7" (4.39m x 2.01m)

Having laminate flooring and doors to rear garden



First Floor

Landing

Having a double glazed window, loft hatch and doors to bedrooms and shower room

Bedroom 1

16' 9" x 9' 10" (5.11m x 3.00m)

Having two double glazed windows, fitted wardrobes, radiator, ceiling light point and laminate flooring

Bedroom 2

13' 5" x 10' 2" (4.09m x 3.10m)

Having a double glazed window, radiator, ceiling light point, storage cupboard and laminate flooring

Shower Room

Having a double glazed window, WC, wash hand basin, shower cubicle, radiator, ceiling light point and tiled flooring

Outside

Front

Having a gravel driveway suitable for multiple vehicles, access to garage and attractive flower beds with a variety of floral displays

Rear

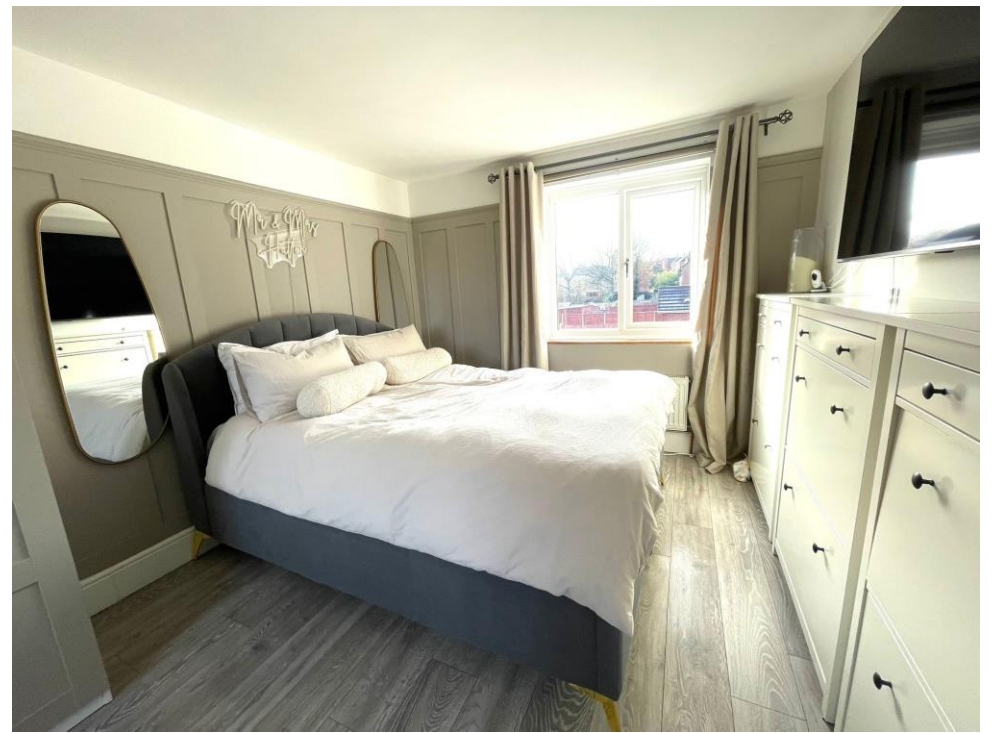
Being a landscaped rear garden

Garage

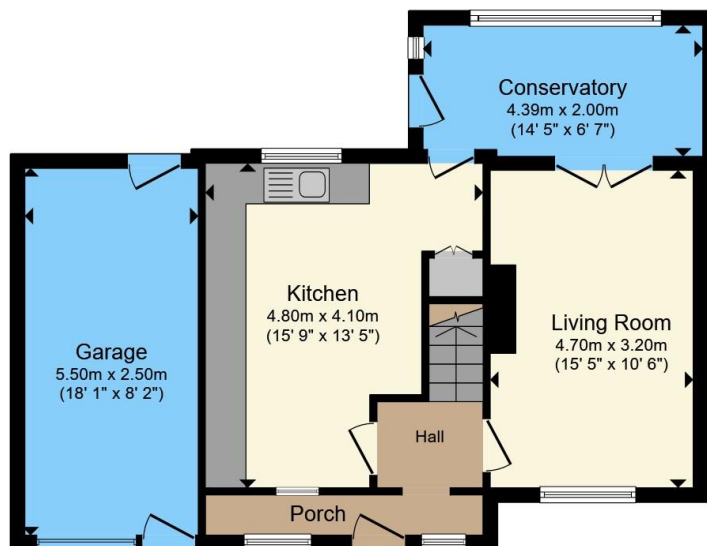
18' 1" x 8' 2" (5.51m x 2.49m)

Ample storage space accessible via front & rear

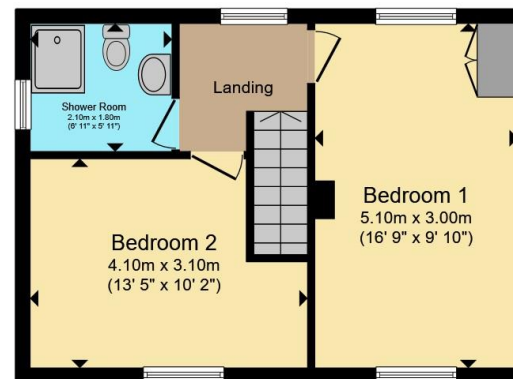








Ground Floor



First Floor

Total floor area 97.0 m² (1,044 sq.ft.) approx

This floor plan is for illustrative purposes only. It is not drawn to scale. Any measurements, floor areas (including any total floor area), openings and orientation are approximate. No details are guaranteed, they cannot be relied upon for any purpose and they do not form part of any agreement. No liability is taken for any error, omission or misstatement. A party must rely upon its own inspection(s). Powered by www.propertybox.io

Connells

To view this property please contact Connells on

T 01543 500923
E cannock@connells.co.uk

10-12 Wolverhampton Road
CANNOCK WS11 1AH

EPC Rating: C Council Tax
Band: B

Tenure: Freehold

view this property online connells.co.uk/Property/CNK108677



1. MONEY LAUNDERING REGULATIONS Intending purchasers will be asked to produce identification documentation at a later stage and we would ask for your co-operation in order that there will be no delay in agreeing the sale. 2. These particulars do not constitute part or all of an offer or contract. 3. The measurements indicated are supplied for guidance only and as such must be considered incorrect. Potential buyers are advised to recheck measurements before committing to any expense. 4. We have not tested any apparatus, equipment, fixtures, fittings or services and it is in the buyers interest to check the working condition of any appliances.

Connells Residential is registered in England and Wales under company number 1489613, Registered Office is Cumbria House, 16-20 Hockliffe Street, Leighton Buzzard, Bedfordshire, LU7 1GN. VAT Registration Number is 500 2481 05.

See all our properties at www.connells.co.uk | www.rightmove.co.uk | www.zoopla.co.uk

Property Ref: CNK108677 - 0003