



Flat 2, Robson House 18A Lawrence Street YO10 3WP

£750 Per Month



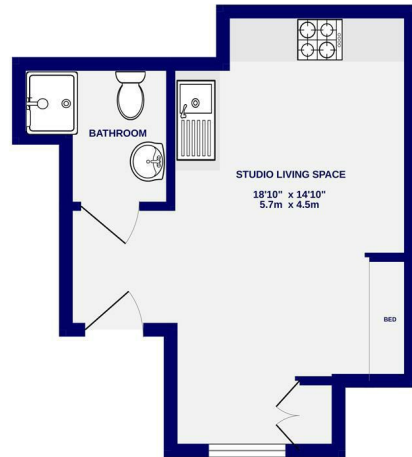
Situated in this small development off Lawrence Street, just a short walk from the city centre. The studio apartment is offered on a part furnished basis and comprises; entrance hall, open plan living/sleeping/ kitchen with washer/dryer, hob, oven, microwave, fridge. The living room doubles up as the sleeping area with pull out double bed. Shower room. Bike storage & communal courtyard. NO PARKING.

Available 19th June

SINGLE OCCUPANY ONLY

Deposit £850 / EPC Rating C / Council Tax Band A

GROUND FLOOR
238 sq.ft. (22.1 sq.m.) approx.



TOTAL FLOOR AREA: 238 sq.ft. (22.1 sq.m.) approx.
While every attempt has been made to ensure the accuracy of the floorplan, measurements of rooms and any other areas are approximate. It is advised to verify the dimensions and floor area of the property.
Map data and other geographical information is for information only and should not be used as a substitute for a professional survey. The contents, systems and appliances shown have not been tested and are guaranteed as to their operation.
Made with Mapbox (2023)



Ashtons Lettings



01904 731404



lettings@ashtonsnet.com

