



## JUER STREET, SW11

£5,000 per month

Four double bedrooms  
Close to Battersea Park  
Private garden  
Great transport links  
Double reception room  
Energy rating: e.

@marshandparsons  
marshandparsons.co.uk

MARSH &  
PARSONS



# ABOUT THE PROPERTY

This wonderful four-bedroom house is neutrally decorated throughout and boasts a double reception room and eat-in kitchen leading onto a private patio garden. Upstairs comprises of four double bedrooms and two bathrooms, one of which is en-suite. There is also a cellar for extra storage.

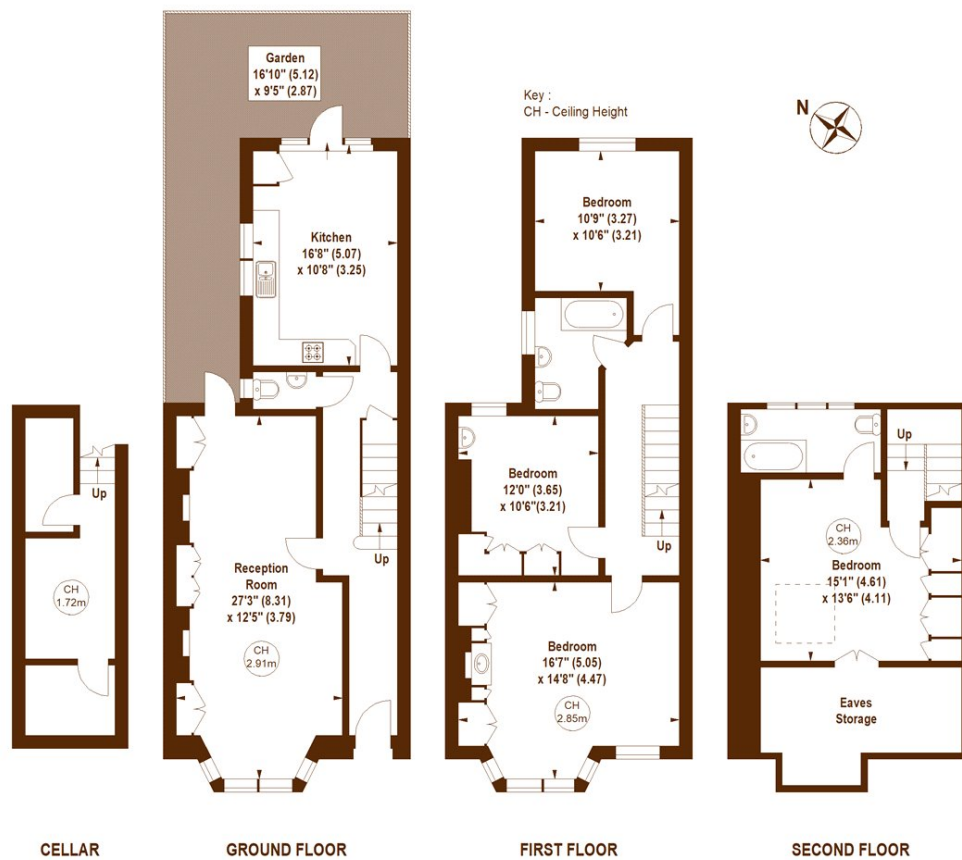
Juer Street is situated just off Albert Bridge road and so the open spaces of Battersea Park are minutes away. Frequent buses run over the river to central London and towards Clapham in the other direction, from both Battersea Bridge road and Albert Bridge road. The river boat also departs from just across the river in Chelsea and



# STEP INSIDE JUER STREET

## Juer Street, SW11

APPROX. GROSS INTERNAL FLOOR AREA 1842 SQFT / 171.12 SQM  
(INCLUDING EAVES STORAGE)  
EAVES STORAGE AREA 111 SQFT / 10.31 SQM



Not to scale, for guidance only and must not be relied upon as a statement of fact.  
All measurements and areas are approximate only

Battersea  
020 7228 9292

Energy Rating: We aim to make our particulars both accurate and reliable. However, they are not guaranteed; nor do they form part of an offer or contract. If you require clarification on any points then please contact us, especially if you're traveling some distance to view. Please note that appliances and heating systems have not been tested and therefore no warranties can be given as to their good working order

MARSH &  
PARSONS