

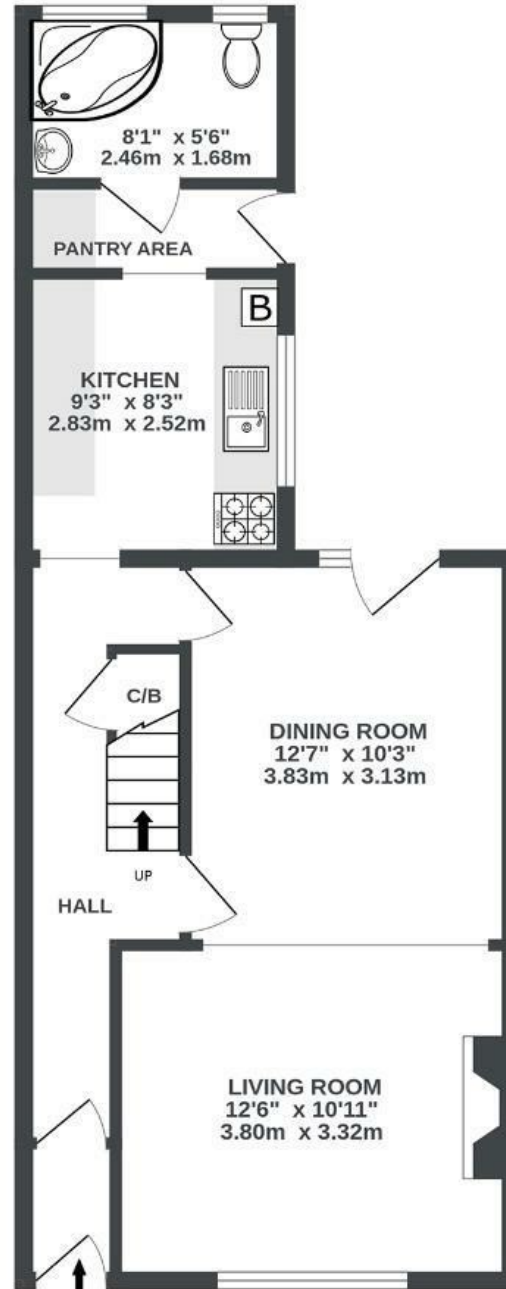
Orchard Road

ST GEORGE

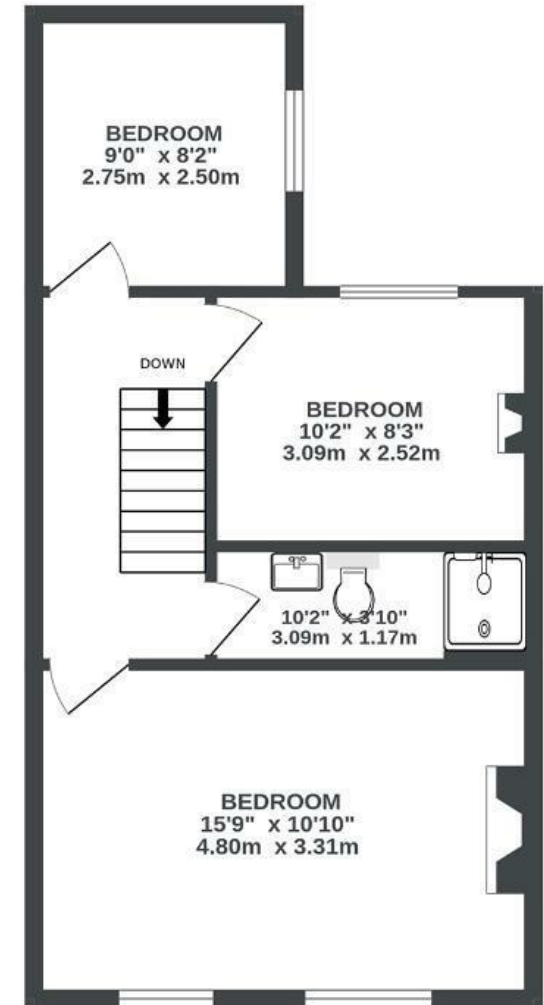
APPROXIMATE FLOOR AREA
88.4 SQM / 952 SQFT



GROUND FLOOR
512 sq.ft. (47.6 sq.m.) approx.



1ST FLOOR
439 sq.ft. (40.8 sq.m.) approx.



Boardwalk

Orchard Road

ST. GEORGE, BRISTOL



£400,000



3 Bedrooms



BS5 7HS



2 Bathrooms

"Lots of green space on the doorstep, from Troopers Hill to St Georges Park. It fits my lifestyle very well with the want for exercise and nature on my doorstep. The community on this road/area are welcoming, warm, caring and look out for one another. There's a WhatsApp group for the road where everyone supports one another."

