

18 Wickham Way

Sherfield on Loddon

£485,000

A Well-Presented Semi-detached Townhouse in Sherfield Park



GAYE HACKING
HOMES LTD

Guiding you home
with honesty and integrity



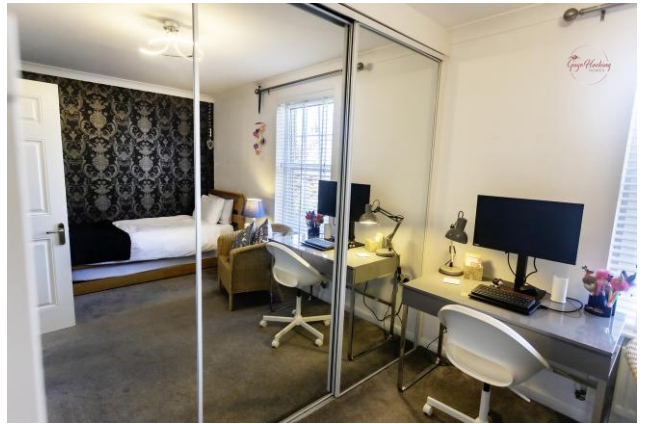
Gaye Hacking Director

01256 578098

07521 930870

enquiries@gayehacking.homes

www.gayehacking.homes



- Well-presented, semi-detached townhouse at the end of a cul-de-sac
- 1395 sq. ft. of freehold accommodation plus garage, totalling 1589 sq. ft.
- Bright, spacious home with separate dining room and refurbished modern kitchen, with new boiler (fitted January 2026).
- Water softener, integrated washing machine, microwave and dishwasher.
- Welcoming entrance hall with built-in coat cupboard.
- Three double bedrooms, all with built-in wardrobes.
- Principal bedroom with en-suite.
- Family bathroom and cloakroom.
- Stunning tiered garden ideal for al fresco dining and entertaining.
- Single garage plus parking on drive.
- Useful side entrance to property.
- Sought-after Sherfield Park .
- Excellent rail links to London.
- Easy access to A33, M3 and M4.
- EPC C
- Council tax E