



OVER 60?

Secure this property
for up to **59% less!**

Price

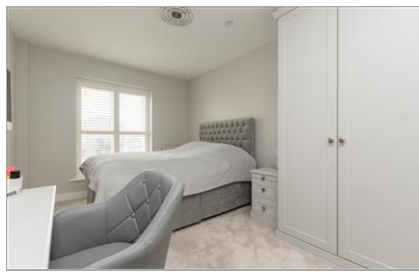
£325,000

Leasehold

2x  2x  1x 

**Glenway Road,
Rochester, Kent, ME1**

Wards
Helping you move forwards



Main features

- **Stunning river facing apartment with balcony**
- **Perfect first time buy!**
- **Immaculately presented**
- **A stone's throw to the historic High Street and high speed station**
- **Must be viewed to appreciate everything it offers**

Accommodation

THIRD FLOOR

Hallway

Kitchen/Lounge/Diner: 25'11 x 11'8 (7.90m x 3.56m)

Balcony

Bedroom 1: 14'7 x 8'9 (4.45m x 2.67m)

En-Suite Shower Room: 6'10 x 5'11 (2.08m x 1.80m)

Bedroom 2: 15'0 x 9'1 (4.58m x 2.77m)

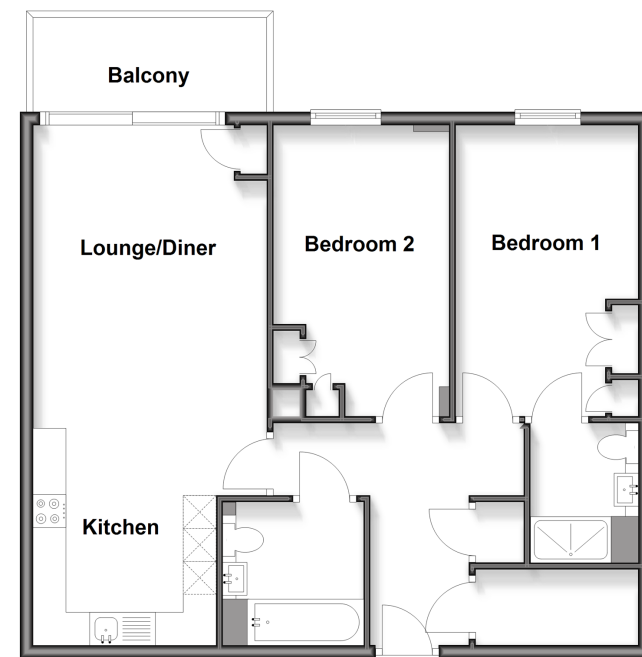
Bathroom: 7'2 x 6'9 (2.19m x 2.06m)

OUTSIDE

Allocated Parking

Third Floor

Approx. 72.6 sq. metres (781.3 sq. feet)



Call Rochester - 01634 830925 ■ wardsofkent.co.uk

■ Legal advice should be taken to verify fixtures/fittings, planning, alterations and/or lease details
 ■ Through a Homewise Home For Life Plan people aged 60+ can secure this property for up to 59% less, by purchasing a Lifetime Lease.

■ Appliances & services are untested, dimensions are approximate and floor plans are not to scale