



**Connells**

Peregrine Way  
Hatfield



### Property Description

Situated within a popular modern development in Hatfield, this beautifully presented double fronted family home offers generous and modern living throughout, ideal for growing families looking for both space and practicality.

The ground floor features two spacious reception rooms, a modern fitted kitchen and a downstairs cloakroom, creating a fantastic layout for both everyday living and entertaining.

Upstairs, the property boasts four double bedrooms, with fitted wardrobes to two bedrooms and dual aspect windows allowing plenty of natural light. The home further benefits from three bathrooms, providing excellent convenience for busy family living.

Externally, the property benefits from a low maintenance rear garden, detached garage and driveway parking.

Ideally located close to local amenities, well regarded schools and excellent transport links including the A1(M), this impressive home is ready to move straight into.



## Kitchen

13' 2" x 7' 4" ( 4.01m x 2.24m )

## Dining Room

14' 1" x 8' 5" ( 4.29m x 2.57m )

## Living Room

16' 3" x 10' 5" ( 4.95m x 3.17m )

## Bedroom 1

11' x 10' 5" ( 3.35m x 3.17m )

## En-Suite

7' 6" x 4' 11" ( 2.29m x 1.50m )

## Bedroom 4

10' 6" x 10' 6" ( 3.20m x 3.20m )

## Bathroom

6' 8" x 6' 2" ( 2.03m x 1.88m )

## Bedroom 2

13' 5" x 10' 5" ( 4.09m x 3.17m )

## Bedroom 3

11' 9" x 9' 9" ( 3.58m x 2.97m )

## Shower Room

7' 2" x 4' 11" ( 2.18m x 1.50m )

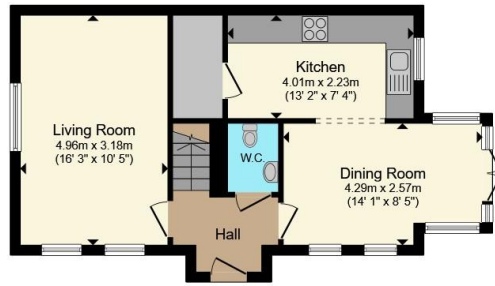
## Garage

17' 8" x 9' 2" ( 5.38m x 2.79m )

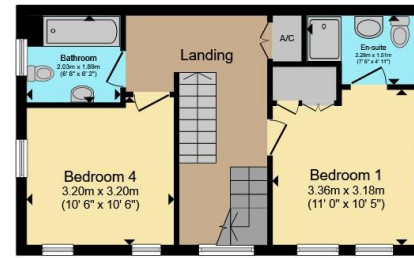




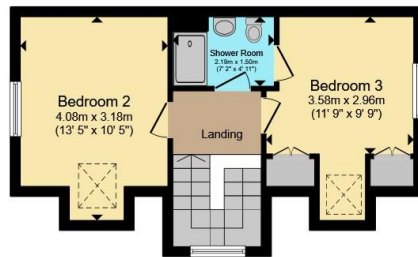




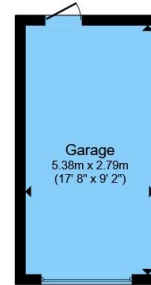
**Ground Floor**



**First Floor**



**Second Floor**



**Garage**

Total floor area 138.1 m<sup>2</sup> (1,487 sq.ft.) approx

This floor plan is for illustrative purposes only. It is not drawn to scale. Any measurements, floor areas (including any total floor area), openings and orientation are approximate. No details are guaranteed, they cannot be relied upon for any purpose and they do not form part of any agreement. No liability is taken for any error, omission or misstatement. A party must rely upon its own inspection(s). Powered by [www.propertybox.io](http://www.propertybox.io)



To view this property please contact Connells on

**T 01707 322 903**

**E [welwyngardencity@connells.co.uk](mailto:welwyngardencity@connells.co.uk)**

38 Wigmores North  
WELWYN GARDEN CITY AL8 6PH

EPC Rating: C Council Tax Band: E

Tenure: Freehold

**view this property online [connells.co.uk/Property/WWY307701](http://connells.co.uk/Property/WWY307701)**



1. MONEY LAUNDERING REGULATIONS Intending purchasers will be asked to produce identification documentation at a later stage and we would ask for your co-operation in order that there will be no delay in agreeing the sale. 2. These particulars do not constitute part or all of an offer or contract. 3. The measurements indicated are supplied for guidance only and as such must be considered incorrect. Potential buyers are advised to recheck measurements before committing to any expense. 4. We have not tested any apparatus, equipment, fixtures, fittings or services and it is in the buyers interest to check the working condition of any appliances.

Connells Residential is registered in England and Wales under company number 1489613, Registered Office is Cumbria House, 16-20 Hockliffe Street, Leighton Buzzard, Bedfordshire, LU7 1GN. VAT Registration Number is 500 2481 05.

**See all our properties at [www.connells.co.uk](http://www.connells.co.uk) | [www.rightmove.co.uk](http://www.rightmove.co.uk) | [www.zoopla.co.uk](http://www.zoopla.co.uk)**

Property Ref: WWY307701 - 0002