



Victoria Bolt
estate agents POWERED BY **exp** UK

Pennycross Close, Plymouth

Guide Price £210,000

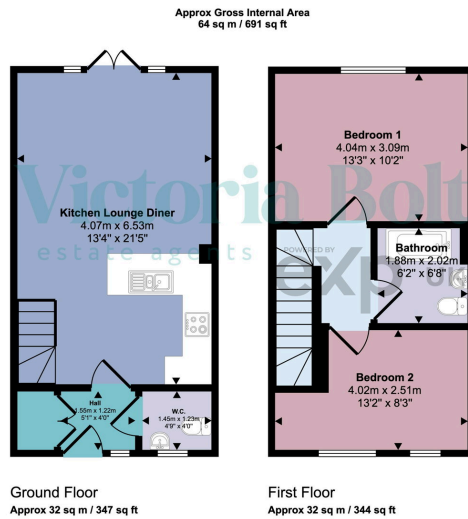
🛏️ 2 🚿 2 🚗 1



- Modern terraced home available for sale with no onward chain
- Downstairs WC
- Open-plan lounge/diner and kitchen
- Two double bedrooms
- First floor bathroom with shower over bath
- Useful storage cupboard with boiler and washer/dryer
- Rear garden with patio and lawn
- Allocated parking space to the front
- Rear access to visitor parking
- Convenient location close to amenities and transport links



A modern two-bedroom terraced home on Pennycross Close, offering stylish open-plan living, two bathrooms, a tiered garden, and allocated parking. Built within the last 8 years, this well-presented property is ideal for first-time buyers, downsizers or investors seeking a low-maintenance home in a convenient location close to local amenities and transport links.



This floorplan is only for illustrative purposes and is not to scale. Measurements of rooms, doors, windows, and any items are approximate and no responsibility is taken for any error, omission or mis-statement. Icons of items such as bathroom suites are representations only and may not look like the real items. Made with Made Snappy 360.

