



Lower Mortlake Road, TW9

£295,000

This apartment offers approximately 750 sq ft of thoughtfully arranged living space. Situated on the First floor, the accommodation comprises a large entrance hall with generous built-in storage cupboards, leading through to a bright and spacious reception room that incorporates a separate kitchen which can be made open-plan ideal for both everyday living and entertaining. The property further benefits from two well-proportioned double bedrooms, each featuring fitted storages, and a family bathroom.

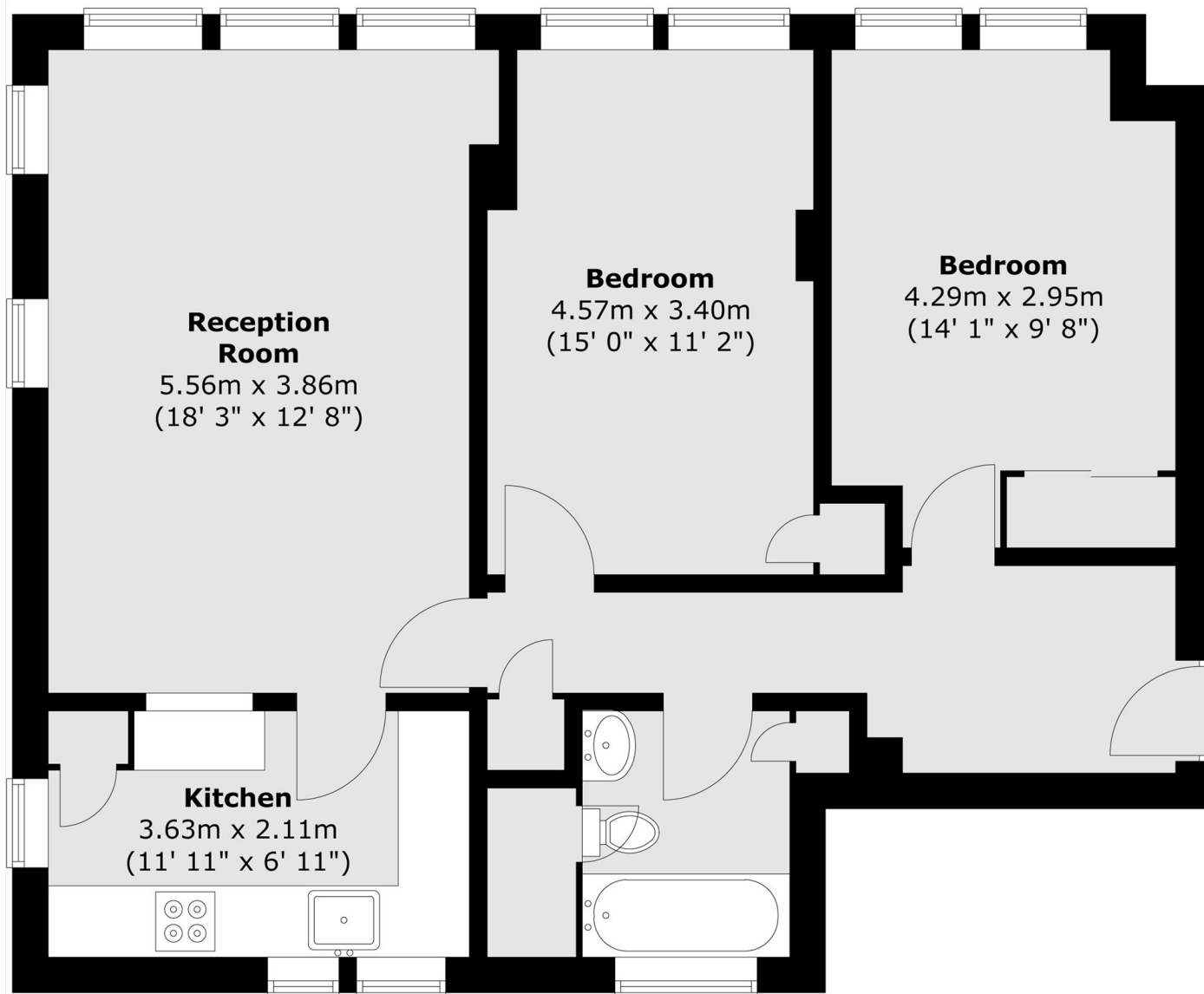
Lower Mortlake Road provides great access to the town centre of Richmond where a plethora of fine restaurants and eateries can be found amongst a vast array of shops, outstanding transport links, the River Thames, Richmond Green and Richmond Park. Whilst also being conveniently situated beside the Royal Botanic Gardens, Kew and the Old Deer Park area.

Features

- Purpose Built Apartment
- Two Double Bedrooms
- Spacious Reception Room
- Close Proximity To Train Station
- Residents Parking
- No Onward Chain

Lower Mortlake Road, Richmond, TW9

First Floor



Total area (approx.) : 69.7 sq. m (750 sq. ft)