



Guide Price

£500,000

Freehold

3x  2x  1x 

**Spiers Farm Close,
Horley, Surrey, RH6**

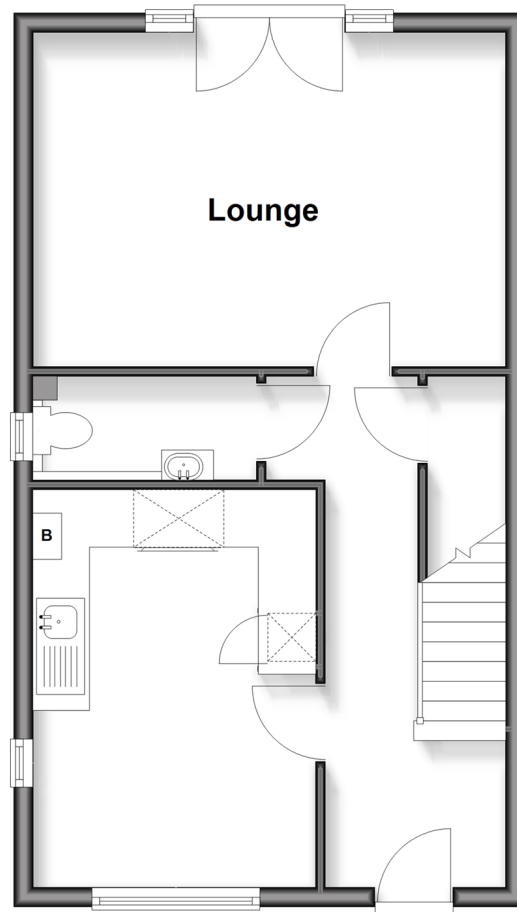
OVER 60?

Secure this property
for up to **59% less!**

cubitt & west
Helping you move forwards

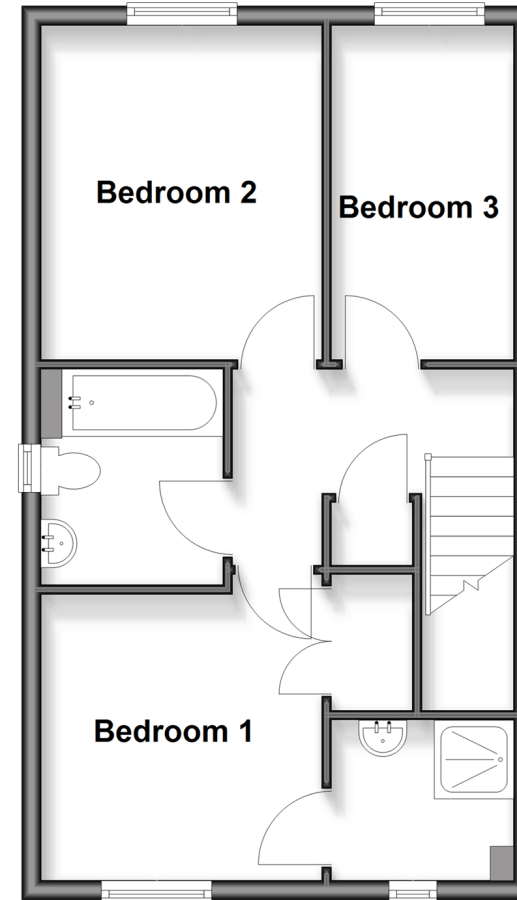
Ground Floor

Approx. 43.8 sq. metres (471.2 sq. feet)



First Floor

Approx. 43.8 sq. metres (471.2 sq. feet)



Accommodation

Entrance Hallway

Lounge: 16'1 x 11'4 (4.91m x 3.46m)

Kitchen/Diner: 13'6 x 9'8 (4.12m x 2.95m)

Cloakroom

Bedroom 1: 10'0 x 9'1 (3.05m x 2.77m)

En Suite Shower Room

Bedroom 2: 11'3 x 9'7 (3.43m x 2.92m)

Bedroom 3: 11'3 x 6'2 (3.43m x 1.88m)

Bathroom

FIRST FLOOR

Landing

OUTSIDE

Driveway

Front & Rear Gardens



Main features

- Immaculately presented throughout
- Located within a private gated community
- Open plan kitchen/diner along with separate lounge
- Driveway to the side, plus a secluded, landscaped garden
- Close to the station, town centre and schools

Nearest Schools

Primary Schools: Manorfield Primary and Nursery School 0.5 miles, Yattendon School 0.5 miles, Meath Green Junior School 1.2 miles

Secondary Schools: Oakwood School 0.4 miles

Transport Information

Train Stations: Horley 0.0 miles, Gatwick Airport 0.8 miles, Salfords 2.4 miles

Address

Spiers Farm Close, Horley, Surrey, RH6

Directions

For directions to this property please contact us.



cubitt&west
Helping you move forwards

Call Horley Branch 01293 785338 ■ cubittandwest.co.uk



■ The seller is a person connected with Cubitt & West as defined in the Estate Agents Act 1979

■ Through a Homewise Home For Life Plan people aged 60+ can secure this property for up to 59% less, by purchasing a Lifetime Lease



20811316/20260307/TP/SI