



OAKFIELD



Fairlight Road, Hastings, TN35 5EL

£1,600 Per Calendar Month



Fairlight Road, Hastings, TN35 5EL

Located in a popular residential setting, this 3 bedroom detached bungalow offers spacious accommodation and attractive gardens.

The accommodation comprises:

Spacious living / dining room with feature curved window overlooking the rear garden; large kitchen / breakfast room with range cooker (gas hob and electric over), integrated under counter fridge, space and plumbing for dishwasher; utility room with space and plumbing for washing machine; conservatory with door to rear garden; family bathroom with full size bath and separate shower cubicle; three well apportioned bedrooms, one of which enjoys a feature curved window.

To the front, the private driveway offers plentiful space for multiple vehicles, a section of lawn, mature tree and attractive flower border, and two entry points to the property. The rear garden is mostly laid to lawn with mature border and enjoys far reaching countryside and sea views.

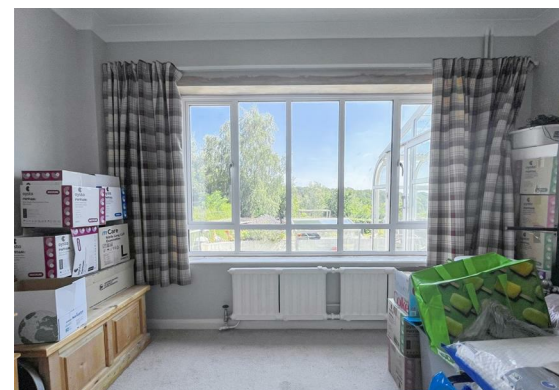
A path provides convenient side access from the front driveway to rear garden, and the access point to the lower cellar.

Other benefits include: gas central heating, double glazing, spacious part boarded loft with loft ladder and electrics, air conditioning unit in the living room, ring doorbell and security lighting and cameras.

The property is situated within close proximity of a wide range of amenities to include supermarkets, schools and bus stop. Walking distance to Fairlight Glen and nearby Hastings Old Town offers a comprehensive range of bars and restaurants, fashionable eateries and the beach.

Long term Tenancy
Annual Income Threshold £48,000
Available early September 2025





Living room

22'4" x 13'4" (6.83m x 4.07m)

Kitchen / Dining Room

22'3" (narrowing to 8'11") x 18'1" (narrowing to 8 (6.80m (narrowing to 2.73m) x 5.52m (narrowing to 2)

Bedroom

15'10" x 10'11" (4.85m x 3.35m)

Bedroom

14'1" x 8'11" (4.31m x 2.72m)

Bedroom

11'11" x 9'4" (3.65m x 2.87m)

Bathroom

8'4" x 8'2" (2.56m x 2.51m)

Utility Room

9'5" x 3'4" (2.88m x 1.02m)

Conservatory

9'8" x 7'8" (2.96m x 2.34m)

Lower Ground Cellar

19'5" x 12'5" (5.94m x 3.79m)

Front Garden

Private Driveway for multiple vehicles

Large Rear Garden

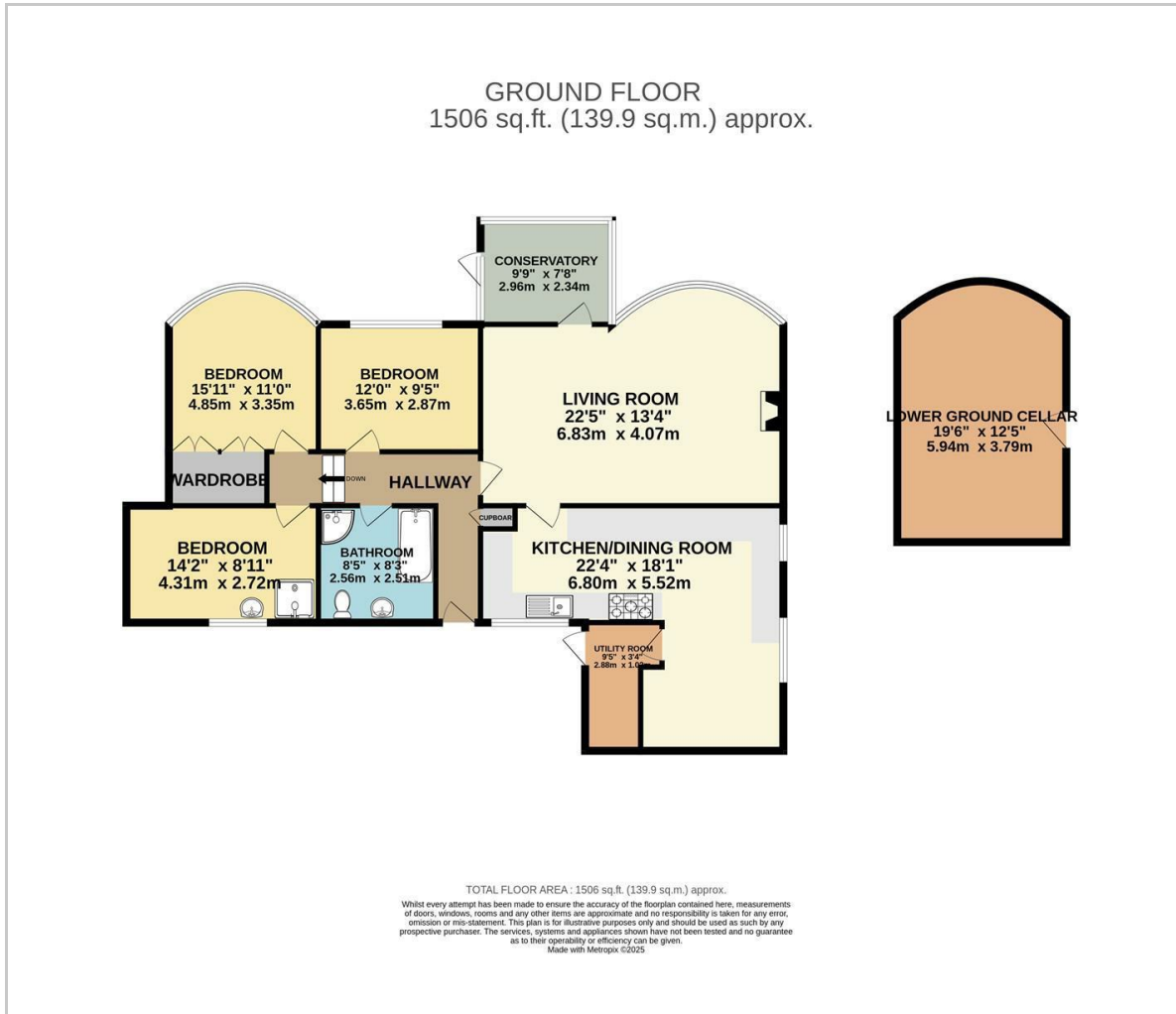
Council Tax Band E - £3,271.38 Per Annum

Appliances

The house is supplied with a range cooker (gas hob and electric oven) and an integrated undercounter fridge. There is space and plumbing for a washing machine, and space and plumbing for a dishwasher



Floor Plan

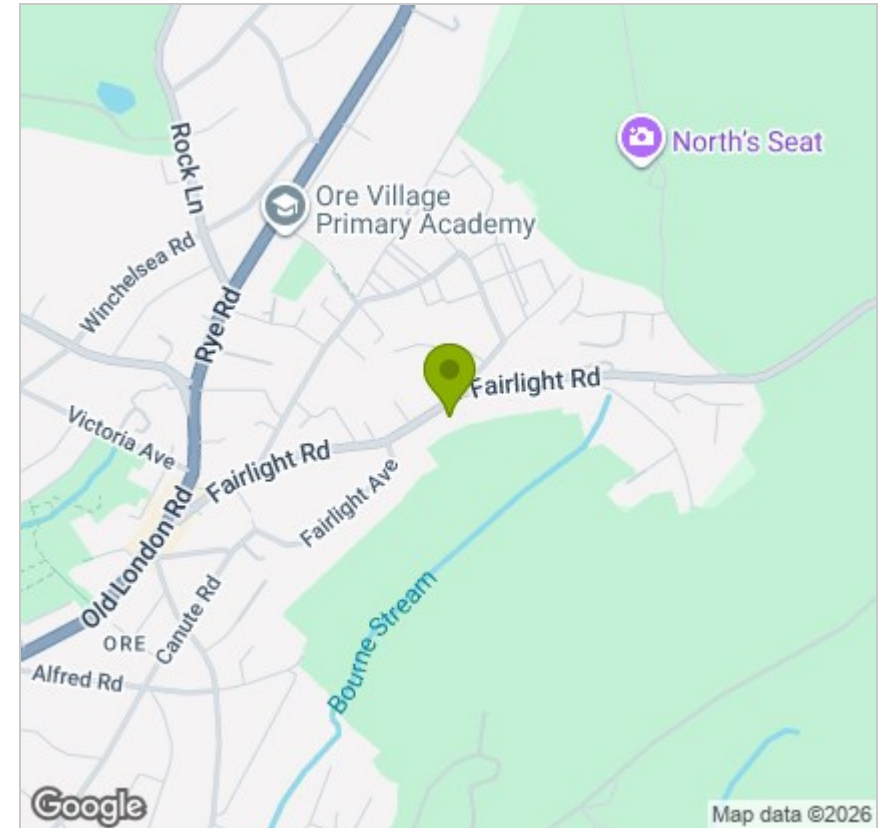


Viewing

Please contact us on 01424 446644
if you wish to arrange a viewing appointment for this property or require further information.

These particulars, whilst believed to be accurate are set out as a general outline only for guidance and do not constitute any part of an offer or contract. Intending purchasers should not rely on them as statements of representation of fact, but must satisfy themselves by inspection or otherwise as to their accuracy. No person in this firm's employment has the authority to make or give any representation or warranty in respect of the property.

Area Map



Energy Efficiency Graph

