

**1 Bed
Apartment
located in**

AiHOMES.

Modern 1B2B Apartment | Axis Tower | M1|55115AT



£288,000

AiHomes is pleased to present this stylish one-bedroom apartment situated in the prestigious Axis Tower, located at 9 Whitworth Street in the vibrant heart of Manchester city centre. Spanning approximately 48 square metres, this modern residence offers an exceptional urban living experience, complete with stunning views of the city skyline.

Upon entering, you will find a bright and spacious open-plan living area that has been thoughtfully designed to maximise natural light and functionality. The fully fitted kitchen is equipped with integrated appliances, ensuring convenience for your daily needs. The apartment boasts a generously sized double bedroom, complemented by an en-suite bathroom, providing both comfort and privacy. Additionally, the property features extensive hallway storage, enhancing practicality and making efficient use of space.

Residents of Axis Tower enjoy a host of premium amenities, including secure entry systems, a dedicated concierge service, and well-maintained communal areas, all contributing to a refined living experience. The development is ideally positioned with excellent transport connectivity, offering easy access to multiple major transport links, making it perfect for those who wish to immerse themselves in the dynamic city life while remaining well-connected to key routes and local attractions.

This property presents a unique opportunity, as it can be sold either vacant or with the current tenant in situ, generating a rental income



AiHOMES.



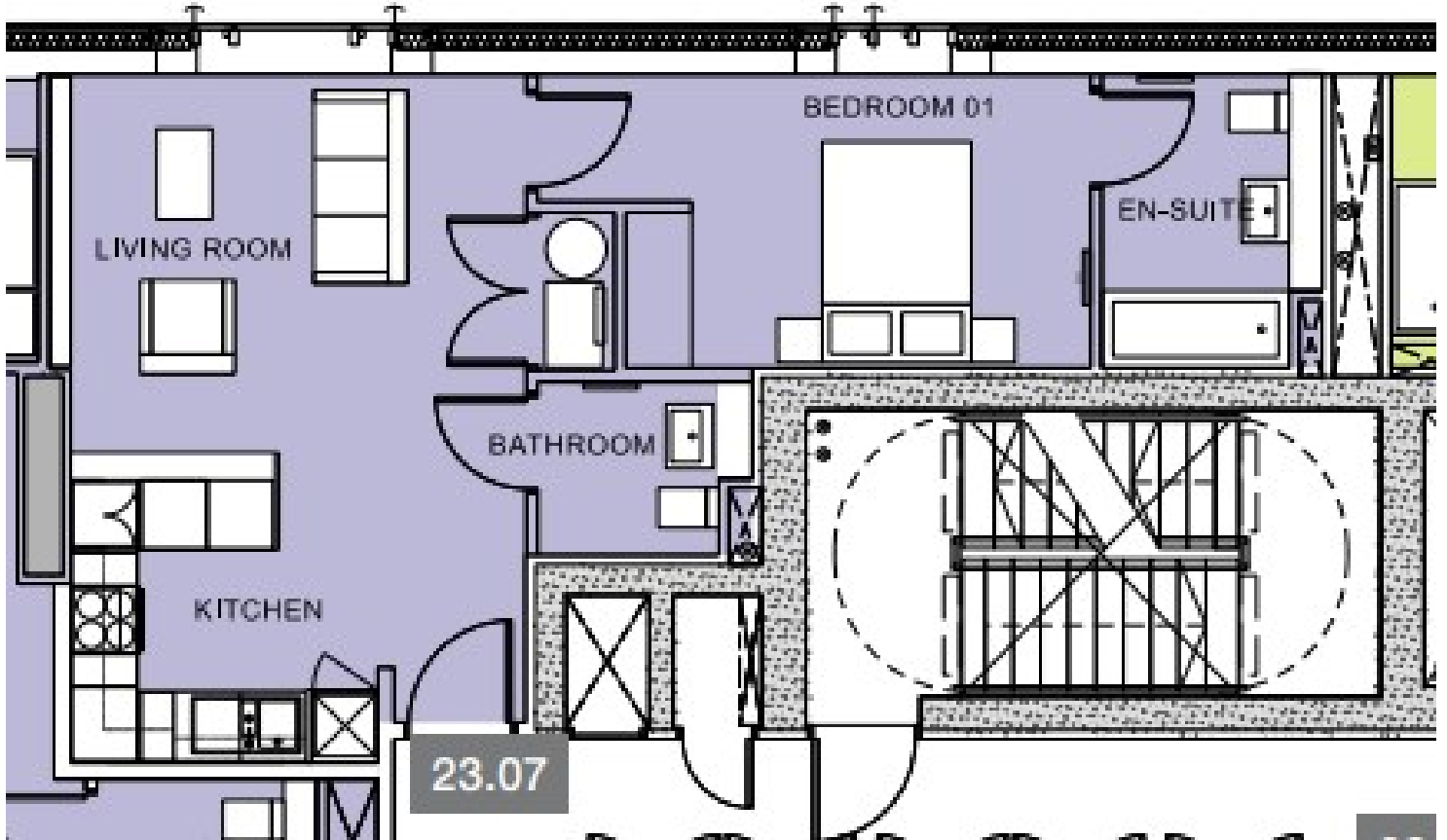
AiHOMES.



AiHOMES.



Modern 1B2B Apartment | Axis Tower | M1|55115AT



Energy Efficiency Rating		
	Current	Potential
<i>Very energy efficient - lower running costs</i>		
(92 plus) A		
(81-91) B		
(69-80) C		
(55-68) D		
(39-54) E		
(21-38) F		
(1-20) G		
<i>Not energy efficient - higher running costs</i>		
England & Wales	EU Directive 2002/91/EC	

EPC Rating:
Council Tax Band: C

CONTACT

5th floor, Empress Business Center
380 Chester Road
Manchester
M16 9EA

E: info@aihomes.uk

T: 0127 332 8069

