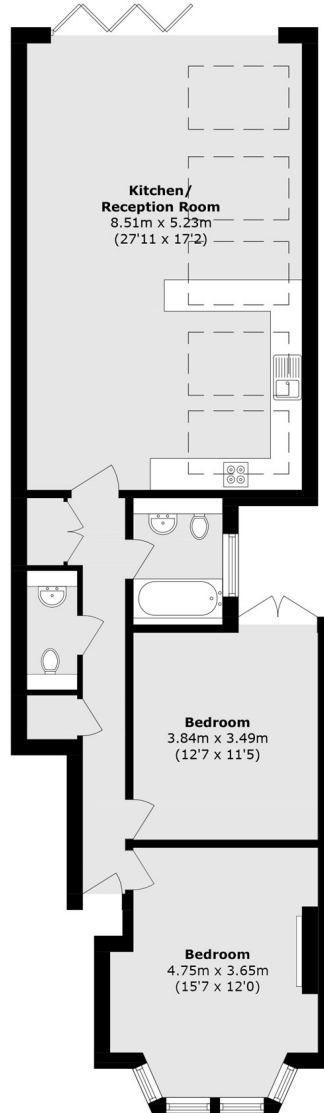


## Second Avenue, W3

£725,000

A two bedroom period conversion garden flat located on the borders of Shepherds Bush. The property offers almost 1000 sq.ft of accommodation, is in immaculate condition throughout and has a share of the freehold.

Conveniently located close to the local amenities of the Askew Road and just over half a mile from both East Acton and Acton Central stations which provide excellent access into town.



Total area (approx.): 92.1 sq. m (991.4 sq. ft)

Robertson Smith & Kempson Acton Sales  
137 High Street, Acton,  
London, W3 6LY  
020 8896 3996  
[actonsales@robertsonsmithandkempson.co.uk](mailto:actonsales@robertsonsmithandkempson.co.uk)

Energy Rating: C. We aim to make our particulars both accurate and reliable. However they are not guaranteed; nor do they form part of an offer or contract. If you require clarification on any points then please contact us, especially if you're traveling some distance to view. Please note that appliances and heating systems have not been tested and therefore no warranties can be given as to their good working order.