

H Together Homes



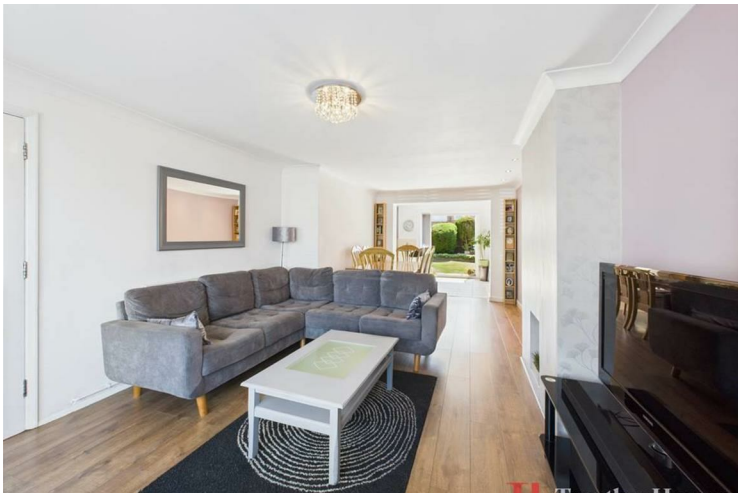
**DAWSON DRIVE
RAINHAM**

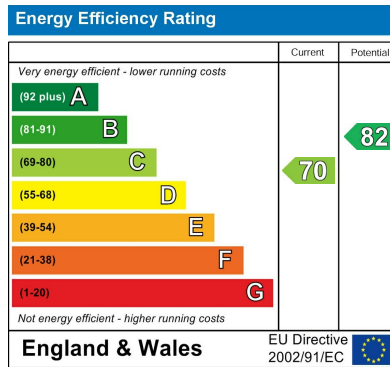
£500,000
Guide price

*** GUIDE PRICE OF £500,000-£525,000 ***

This beautifully extended and thoughtfully designed home offers modern family living across three spacious floors, with generous room sizes, stylish finishes, and plenty of natural light throughout.

From the moment you step inside, you'll feel right at home. The welcoming entrance hall leads you through to a stunning open plan lounge, dining area and kitchen the true heart of the home. Extended to create a bright, airy space perfect for everyday family life or entertaining guests, the kitchen features sleek, modern units, ample storage under the stairs and in the second bedroom, and quality appliances. There's more than enough room for a large dining table, and the space flows seamlessly into the south facing garden through patio doors ideal for those summer BBQs and weekend gatherings.





Agents Note: Whilst every care has been taken to prepare these particulars, they are for guidance purposes only. All measurements are approximate and are for general guidance purposes only and whilst every care has been taken to ensure their accuracy, they should not be relied upon and potential buyers/tenants are advised to recheck the measurements

Together Homes
21 Station Parade
Hornchurch
RM12 5AB

01708 320 600
sales@togetherhomes.co.uk
togetherhomes.co.uk

Together Homes