



Price
£525,000

Freehold

3x  1x  2x 

**Shire Place, Redhill,
Surrey, RH1**

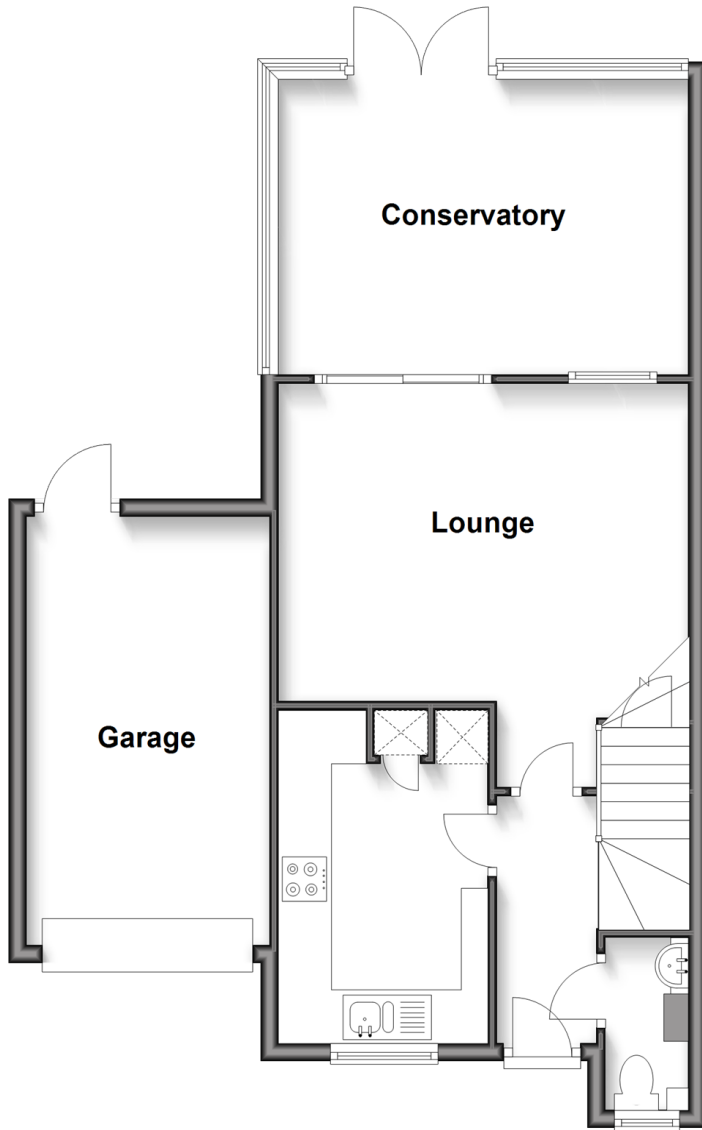
OVER 60?

Secure this property
for up to **59% less!**

cubitt & west
Helping you move forwards

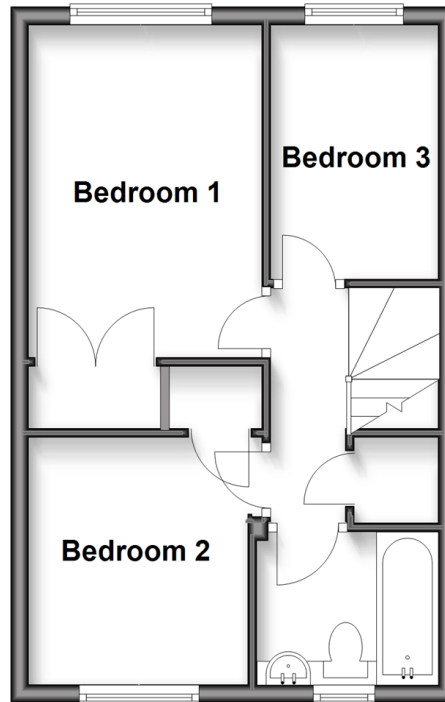
Ground Floor

Approx. 60.7 sq. metres (653.8 sq. feet)



First Floor

Approx. 33.8 sq. metres (363.8 sq. feet)



Accommodation

GROUND FLOOR

Entrance Hall

Cloakroom

Kitchen: 12'3 x 7'1 (3.74m x 2.16m)

Lounge: 15'4 x 15'3 (4.68m x 4.65m)

Conservatory: 14'5 x 10'6 (4.40m x 3.20m)

Garage

FIRST FLOOR

Landing

Bedroom 1: 12'5 x 8'1 (3.79m x 2.47m)

Bedroom 2: 9'3 x 8'2 (2.82m x 2.49m)

Bedroom 3: 8'1 x 6'2 (2.47m x 1.88m)

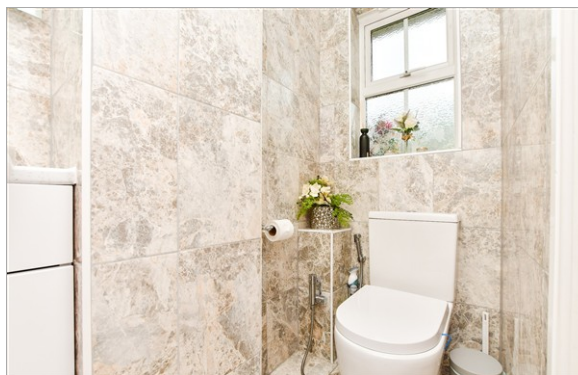
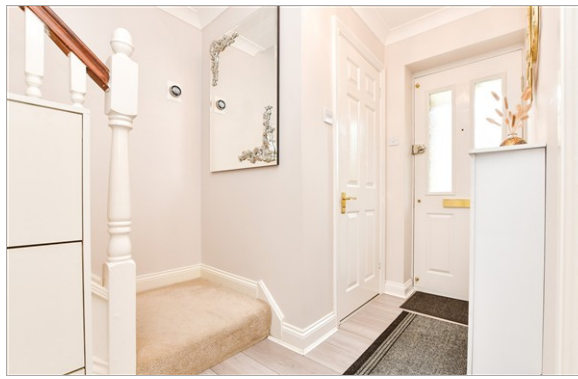
Bathroom

OUTSIDE

Driveway

Front Garden

Rear Garden



Main features

- Excellent commuter location, with direct trains to London
- Potential to develop and extend (subject to planning permission)
- Great local amenities and excellent school catchment
- Driveway parking and garage
- Spacious lounge with sliding door to bright and airy conservatory



Nearest Schools

Primary Schools: Brambletye Junior School 0.2 miles, St John's Primary 0.4 miles, St Joseph's Catholic Primary, Redhill 0.9 miles
Secondary Schools: Dunottar Day for Girls 0.7 miles, Cornfield School 0.9 miles, The Warwick School 0.9 miles



Transport Information

Train Stations: Earlswood 0.1 miles, Redhill 0.8 miles, Nutfield 1.4 miles



Address

Shire Place, Redhill, Surrey, RH1



Directions

For directions to this property please contact us.



cubitt&west
Helping you move forwards

Call Redhill Branch 01737 778866 ■ cubittandwest.co.uk



- Legal advice should be taken to verify fixtures/fittings, planning, alterations and/or lease details
- Appliances & services are untested, dimensions are approximate and floor plans are not to scale
- Through a Homewise Home For Life Plan people aged 60+ can secure this property for up to 59% less, by purchasing a Lifetime Lease



23411468/20260228/JE/JB2