

Wapping Lane, London E1W

Offers In Excess Of £350,000 Leasehold







Description

This appealing 1 bedroom apartment offers a well-lit, welcoming, open-plan living space, featuring a spacious bedroom, a contemporary bathroom with quality fittings and convenient balcony access from the reception room.

This property benefits from an excellent location with access to transport links available from Shadwell Station (0.1 miles) and Wapping Station (0.4 miles) and close-by for popular cafes and restaurants.

Leasehold 101 years (exp. 31/12/2127)
Ground Rent: Approx. £304 pa
Service Charge: Approx. £2,319 pa
Council Tax Band: D
EPC Rating: C

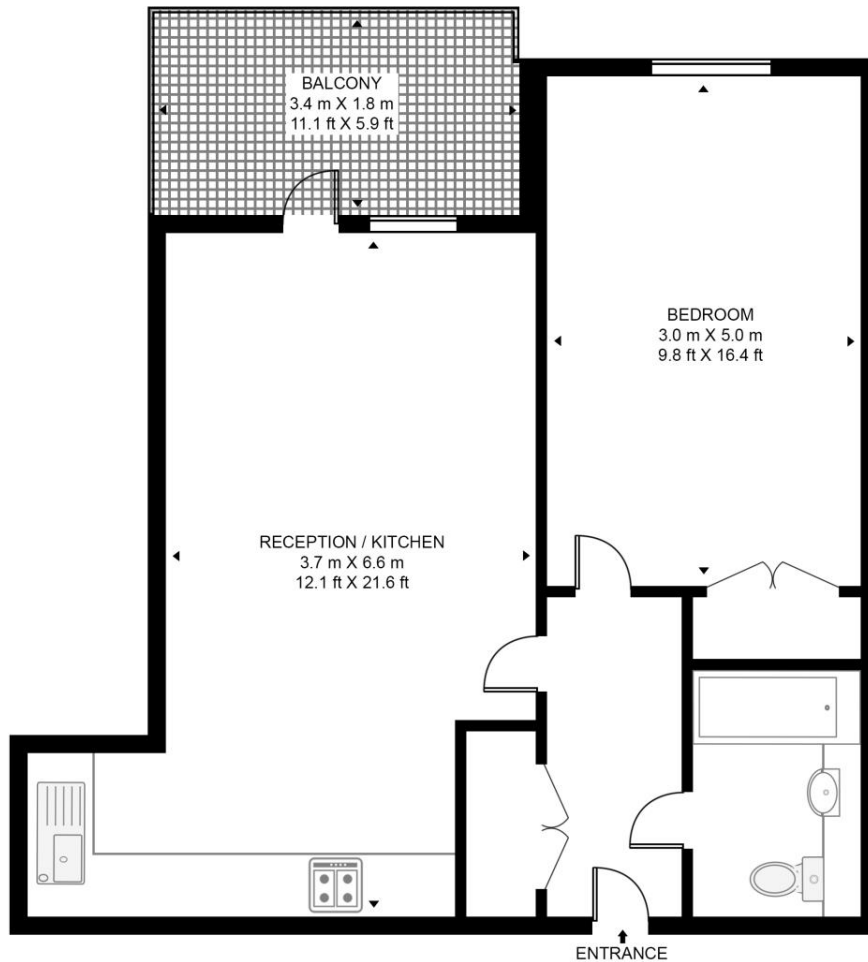
- Bright 1 bedroom apartment
- 1 Bathroom
- 4th floor
- Generous balcony
- Shadwell Station (0.1 miles)
- Wapping Station (0.4m)
- Within easy reach of River Thames and Tower Bridge
- Approx. 545 sq ft / 50.6 sq m

Floorplan

545 sq ft | 51 sq m

ELUNA APARTMENTS

APPROXIMATE GROSS INTERNAL FLOOR AREA 545 SQ.FT (50.6 SQ.M)



FOURTH FLOOR



This floor plan has been defined by the RICS Code of Measurement. This floor plan and all others are for approximate representative purposes only and upon usage is agreed to as such by the client.

WWW: hdvirtualart.com | TEL: 0203.974.1567 | EMAIL: info@hdvirtualart.com

City
25 Walbrook The Walbrook
Building,
London EC4N 8AF
+4420 7337 4000

Urban living, your way.

jll.co.uk/residential

© 2019 Jones Lang LaSalle IP, Inc. All rights reserved. All information contained herein is from sources deemed reliable; however, no representation or warranty is made to the accuracy thereof.

