

48 Cedar Court

Epping, Epping

A superb one bedroom first floor apartment tucked away in the splendid spot of Cedar Court, Epping.
Council Tax band: C

Tenure: Share of Freehold

- Spacious 1 bedroom apartment
- Short walk to Epping station & high street
- Balcony
- Share of freehold
- Allocated parking



Hallway

Kitchen

11' 2" x 7' 5" (3.40m x 2.26m)

Lounge / Dining Room

16' 5" x 15' 1" (5.00m x 4.60m)

Bedroom

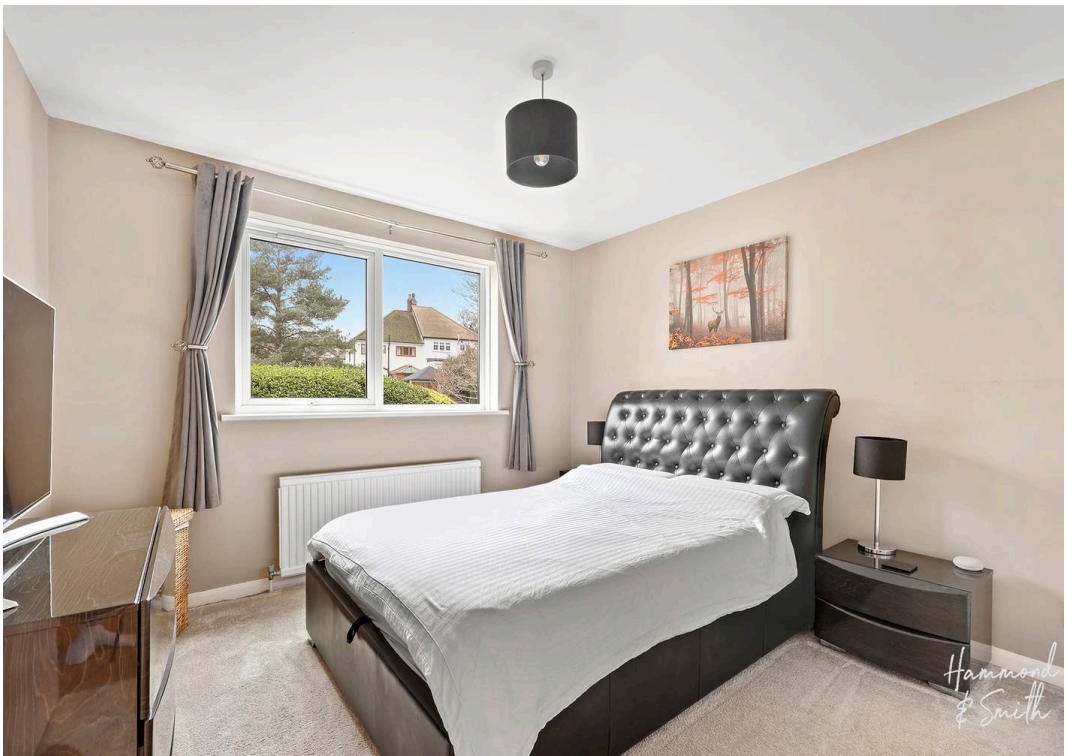
10' 10" x 10' 6" (3.31m x 3.21m)

Shower Room

5' 9" x 5' 1" (1.76m x 1.56m)

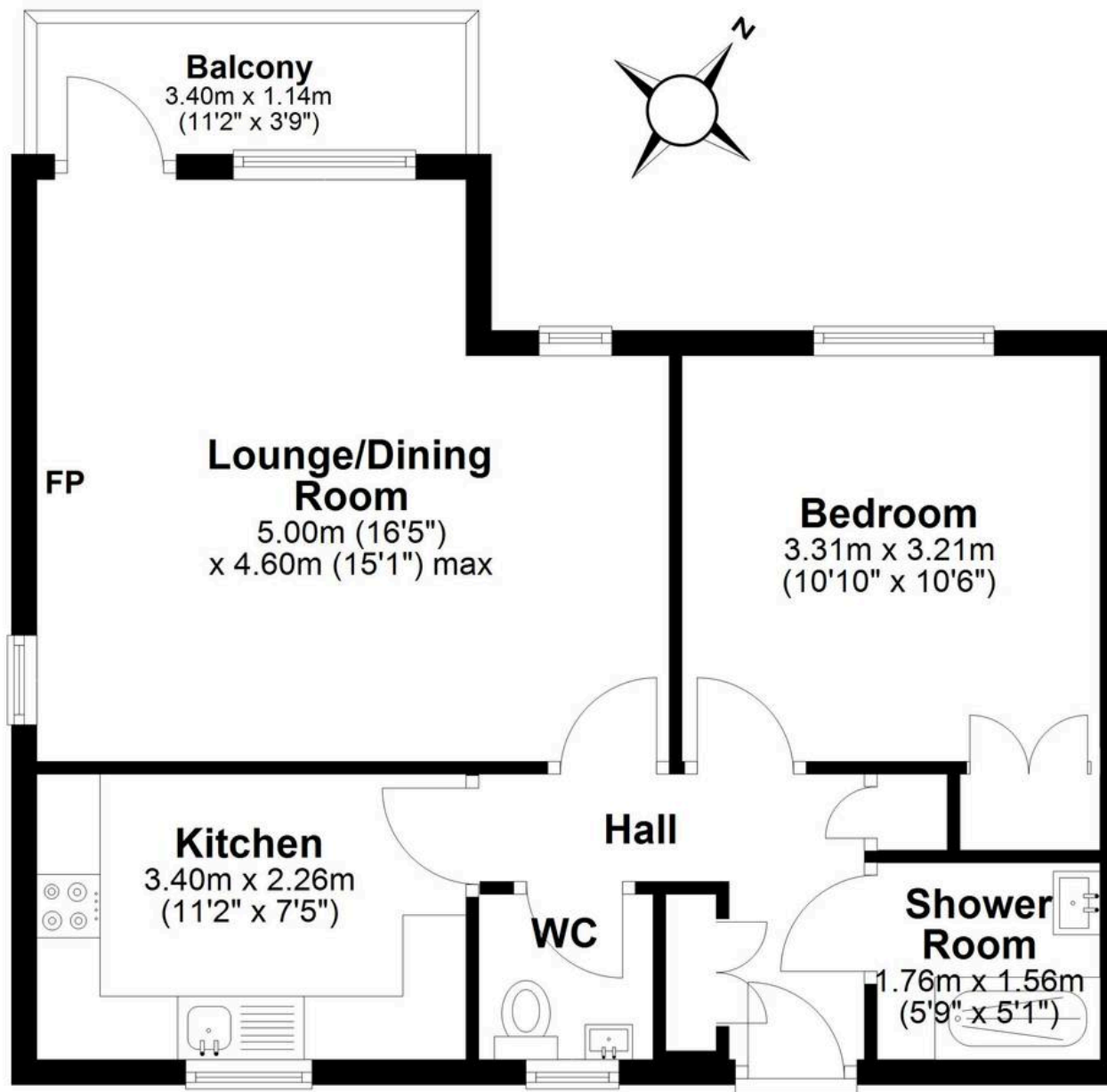
WC





First Floor

Approx. 51.6 sq. metres (554.9 sq. feet)



Total area: approx. 51.6 sq. metres (554.9 sq. feet)