

BURGIN ATKINSON

& C O M P A N Y

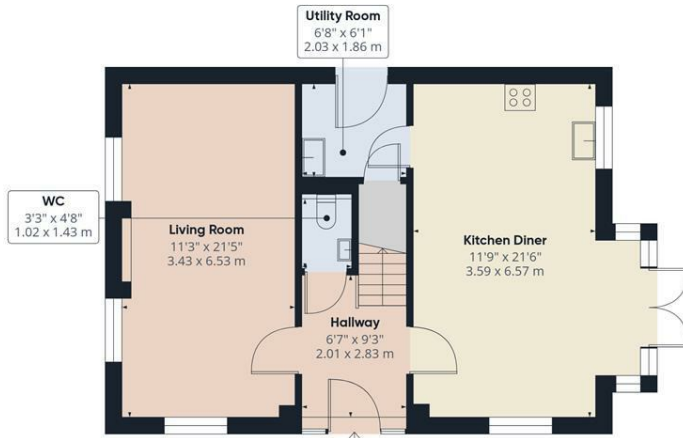


13 Forester Gardens, Retford, DN22 6UR

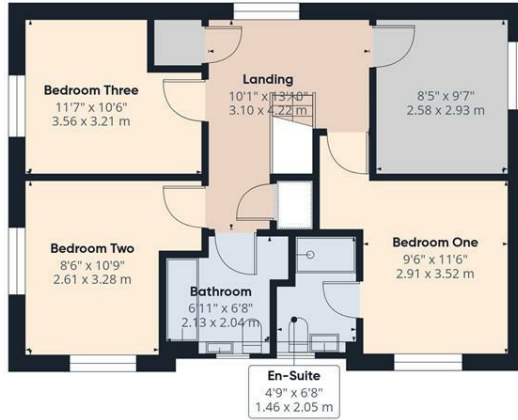
MODERN 4 BED DETACHED FAMILY HOME - PRIVATE NEW BUILD CUL-DE-SAC - OPEN PLAN KITCHEN DINER WITH SEPERATE UTILITY - EN-SUITE TO MAIN BEDROOM - ENCLOSED REAR GARDEN - OFF STREET PARKING + DETACHED SINGLE GARAGE - EPC RATING : B

- Modern 4 Bed Detached Family Home
- Pleasant Open Plan Kitchen Diner
- En-Suite to Main Bedroom
- Utility Room + Ground Floor W/C
- Enclosed Rear Garden
- Off Street Parking
- Detached Single Garage
- Council Tax Band : D

£370,000



Ground Floor Building 1



Floor 1 Building 1

Approximate total area^m
1263 ft²
117.4 m²

(1) Excluding balconies and terraces

Calculations reference the RICS IPMS 3C standard. Measurements are approximate and not to scale. This floor plan is intended for illustration only.

GIRAFFE360

