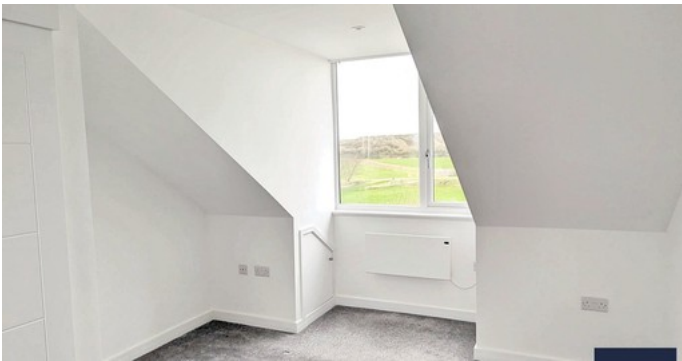




# Grove Road Portland



- ✓ Two Double Bedrooms
- ✓ Off Street And Allocated Parking
- ✓ Two Bathrooms
- ✓ Minutes To Easton
- ✓ Local Amenities Close By
- ✓ Bus Routes Nearby
- ✓ Isle Of Portland
- ✓ Grove Road
- ✓ Unfurnished
- ✓ EPC Rating C

**£1,100** Annum

Bedroom 2 Bathroom 2 Reception 1