



PARK CRESCENT

Marylebone, W1B



A TRUE GEM AT THE MOST PRESTIGIOUS ADDRESS

Situated within a rare Grade II listed build in one of London's most prestigious and historically fascinating locations on the edge of Regent's Park.



Local Authority: City of Westminster

Council Tax band: H

Tenure: Leasehold: Approximately 131 years remaining

Ground rent: £700 per annum, reviewed every 25 years, next review due 2057

Service charge: £18,236 per annum, reviewed every year, next review due 2026

Guide price: £11,950,000



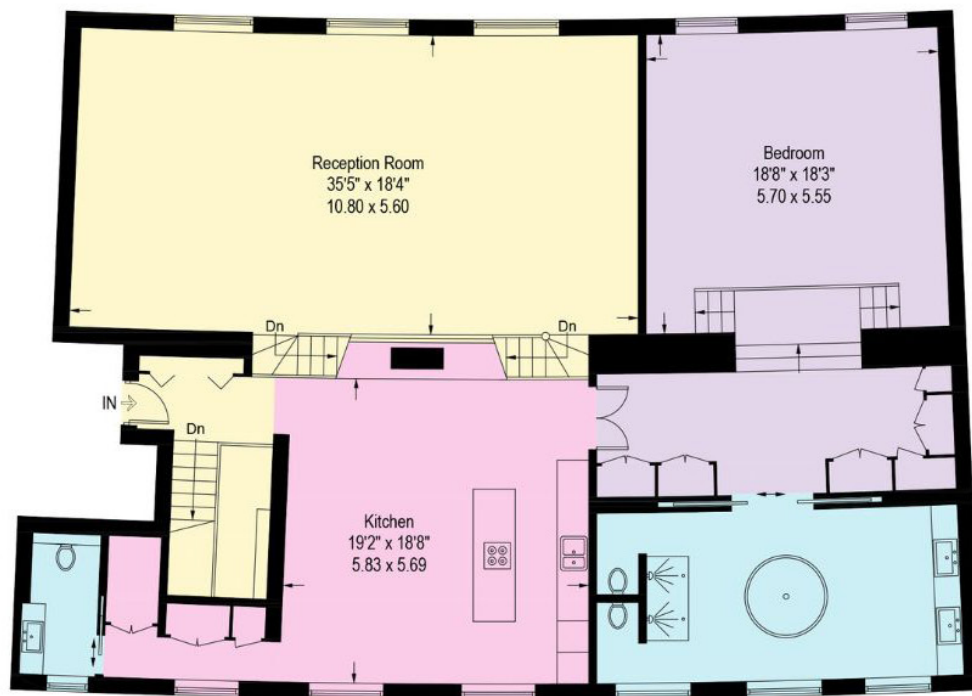
BRIGHT AND MODERN HOME

This bright first floor apartment is finished to an exceptional standard throughout and features stunning ceiling heights and modern fixtures and fittings. Comprising a large open plan reception room, dining area and floor to ceiling windows overlooking the communal gardens, large kitchen, principal bedroom alongside three additional double bedrooms and four bathrooms. When entering the apartment, you are greeted by a modern kitchen with breakfast island and separate dining table. The reception/dining area is on a separate raised level, featuring stunning floor-to-ceiling windows offering an abundance of natural light. The lower level consists of a separate guest WC and cloakroom, with immaculate master bedroom offering outstanding views, separate walk-in wardrobe and bathroom suite. The second floor offers three double bedrooms all with ample storage and two with en-suites all designed to a high standard. Resident's benefits include day-time concierge and exclusive access to eight acres of communal gardens. Park Crescent is in a highly coveted location on the edge of London's Regent's Park. It is one of the most famous Royal Parks and retains many elements of John Nash's original design covering more than 400 acres.

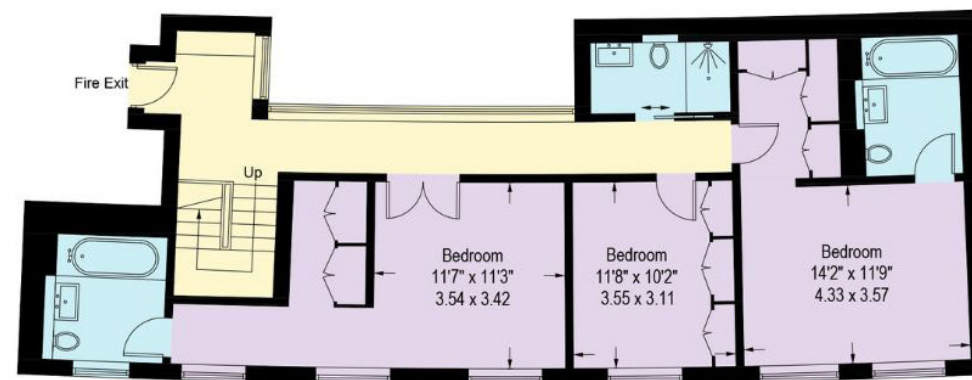








First Floor



Second Floor

Approximate Gross Internal Area = 293.1 sq m / 3,155 sq ft

This plan is for layout guidance only. Not drawn to scale unless stated. Windows and door openings are approximate. Whilst every care is taken in the preparation of this plan, please check all dimensions, shapes and compass bearings before making any decisions reliant upon them. (ID767266)

We would be delighted
to tell you more.

Ali Mathews
+44 20 3435 6443
ali.mathews@knightfrank.com

Knight Frank Marylebone
Unit 49, 55 Baker Street
W1U 8EW

knightfrank.co.uk

Your partners in property

1. Particulars: These particulars are not an offer or contract, nor part of one. You should not rely on statements given by Knight Frank in the particulars, by word of mouth or in writing ("information") as being factually accurate about the property, its condition or its value. Neither Knight Frank nor any joint agent has any authority to make any representations about the property, and accordingly any information given is entirely without responsibility on the part of Knight Frank. 2. Material Information: Please note that the material information is provided to Knight Frank by third parties and is provided here as a guide only. While Knight Frank has taken steps to verify this information, we advise you to confirm the details of any such material information prior to any offer being submitted. If we are informed of changes to this information by the seller or another third party, we will use reasonable endeavours to update this as soon as practical. 3. Photos, Videos etc: The photographs, property videos and virtual viewings etc. show only certain parts of the property as they appeared at the time they were taken. Areas, measurements and distances given are approximate only. 4. Regulations etc: Any reference to alterations to, or use of, any part of the property does not mean that any necessary planning, building regulations or other consent has been obtained. A buyer must find out by inspection or in other ways that these matters have been properly dealt with and that all information is correct. 5. Fixtures and fittings: A list of the fitted carpets, curtains, light fittings and other items fixed to the property which are included in the sale (or may be available by separate negotiation) will be provided by the Seller's Solicitors. 6. VAT: The VAT position relating to the property may change without notice. 7. To find out how we process Personal Data, please refer to our Group Privacy Statement and other notices at <https://www.knightfrank.com/legals/privacy-statement>.

Particulars dated January 2026. Photographs and videos dated September 2024. All information is correct at the time of going to print. Knight Frank is the trading name of Knight Frank LLP. Knight Frank LLP is a limited liability partnership registered in England and Wales with registered number OC305934. Our registered office is at 55 Baker Street, London W1U 8AN. We use the term 'partner' to refer to a member of Knight Frank LLP, or an employee or consultant. A list of members names of Knight Frank LLP may be inspected at our registered office. If you do not want us to contact you further about our services then please contact us by either calling 020 3544 0692, email to marketing.help@knightfrank.com or post to our UK Residential Marketing Manager at our registered office (above) providing your name and address.