



Not for marketing purposes INTERNAL USE ONLY

Creek Road  
Canvey Island



### Property Description

This two-bedroom park home sits within the well-regarded Kings Park Village, a peaceful and secure over-50s community known for its friendly, welcoming atmosphere.

Inside, the home offers bright and comfortable single-level living, including a relaxing lounge, a practical kitchen, two well-proportioned bedrooms, and a neatly fitted bathroom.

Outside, the private plot provides an easy-to-maintain space for enjoying the outdoors, with the wider park offering attractive surroundings and a supportive community environment.

A great choice for those looking for a calm, low-maintenance lifestyle in a secure setting.

This two-bedroom park home sits within the well-regarded Kings Park Village, a peaceful and secure over-50s community known for its friendly, welcoming atmosphere.

Inside, the home offers bright and comfortable single-level living, including a relaxing lounge, a practical kitchen, two well-proportioned bedrooms, and a neatly fitted bathroom.

Outside, the private plot provides an easy-to-maintain space for enjoying the outdoors, with the wider park offering attractive surroundings and a supportive community environment.

A great choice for those looking for a calm, low-maintenance lifestyle in a secure setting.

This two-bedroom park home sits within the well-regarded Kings Park Village, a peaceful and secure over-50s community known for its friendly, welcoming atmosphere.

Inside, the home offers bright and comfortable single-level living, including a relaxing lounge, a practical kitchen, two well-proportioned

bedrooms, and a neatly fitted bathroom.

Outside, the private plot provides an easy-to-maintain space for enjoying the outdoors, with the wider park offering attractive surroundings and a supportive community environment.

A great choice for those looking for a calm, low-maintenance lifestyle in a secure setting.

This two-bedroom park home sits within the well-regarded Kings Park Village, a peaceful and secure over-50s community known for its friendly, welcoming atmosphere.

Inside, the home offers bright and comfortable single-level living, including a relaxing lounge, a practical kitchen, two well-proportioned bedrooms, and a neatly fitted bathroom.

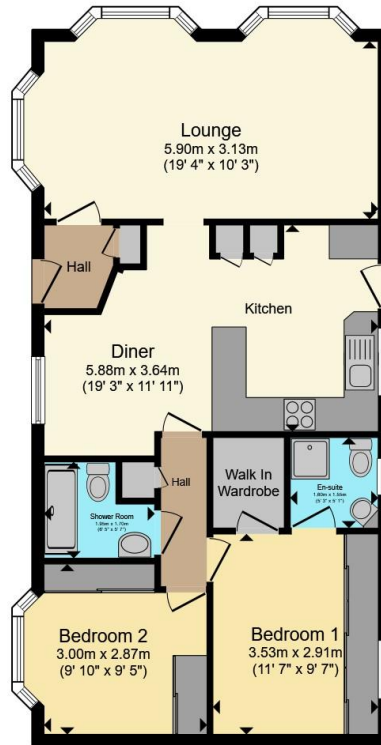
Outside, the private plot provides an easy-to-maintain space for enjoying the outdoors, with the wider park offering attractive surroundings and a supportive community environment.

A great choice for those looking for a calm, low-maintenance lifestyle in a secure setting.









Total floor area 74.0 m<sup>2</sup> (797 sq.ft.) approx

This floor plan is for illustrative purposes only. It is not drawn to scale. Any measurements, floor areas (including any total floor area), openings and orientation are approximate. No details are guaranteed, they cannot be relied upon for any purpose and they do not form part of any agreement. No liability is taken for any error, omission or misstatement. A party must rely upon its own inspection(s). Powered by [www.propertybox.io](http://www.propertybox.io)



To view this property please contact Connells on

**T 01268 777 767**  
**E [rayleigh@connells.co.uk](mailto:rayleigh@connells.co.uk)**

113-115 High Street  
 RAYLEIGH SS6 7QA

EPC Rating: Exempt  
 Council Tax Band: A

Tenure:

**check out more properties at [connells.co.uk](http://connells.co.uk)**

We are currently awaiting Tenure details. For further information please contact the branch. Please note additional fees could be incurred for items such as leasehold packs.



1. MONEY LAUNDERING REGULATIONS Intending purchasers will be asked to produce identification documentation at a later stage and we would ask for your co-operation in order that there will be no delay in agreeing the sale. 2. These particulars do not constitute part or all of an offer or contract. 3. The measurements indicated are supplied for guidance only and as such must be considered incorrect. Potential buyers are advised to recheck measurements before committing to any expense. 4. We have not tested any apparatus, equipment, fixtures, fittings or services and it is in the buyers interest to check the working condition of any appliances.

Connells Residential is registered in England and Wales under company number 1489613, Registered Office is Cumbria House, 16-20 Hockliffe Street, Leighton Buzzard, Bedfordshire, LU7 1GN. VAT Registration Number is 500 2481 05.

**See all our properties at [www.connells.co.uk](http://www.connells.co.uk) | [www.rightmove.co.uk](http://www.rightmove.co.uk) | [www.zoopla.co.uk](http://www.zoopla.co.uk)**

Property Ref: RAY309197 - 0002