



**Connells**

Carpenter Drive  
Amesbury Salisbury



## Property Description

This substantially extended four-bedroom link-detached house offers stunning accommodation which includes a wow-factor 38' kitchen/dining/living room with bi-fold doors. There is also a cosy snug and an orangery which is currently used as a gym/office. The property is ideal for entertaining and for those who want a more contemporary lifestyle. The property is also located just minutes from the A303 and Salisbury. Locals schools and bus routes are also nearby.

### Entrance Hall

### Cloakroom

Comprising a WC and wash hand basin.

### Lounge Area

Bi-fold doors open out onto the low maintenance garden making it ideal for summer and for entertaining, downlighters, underfloor heating.

### Dining Area

Downlighters, side aspect.

### Kitchen

Comprising a single drainer sink unit with a range of stylish wall and base units with built

in appliances including a fridge/freezer, washing machine and dishwasher. Built in oven, inset hob unit with hood over, front aspect.

### Snug

### Orangery

With roof lantern and edging downlighters.

### Landing

### Master Bedroom

Double wardrobe, front aspect.

### Ensuite

Comprising a shower cubicle, pedestal wash hand basin and WC,

### Bedroom Two

Dual aspect with dormer window to front and further window to rear, large eaves storage cupboard.

### Bedroom Three

Rear aspect

### Bedroom Four

Fitted wardrobe, rear aspect.

## Four Piece Bathroom

Comprising a panel enclosed bath with separate shower cubicle, pedestal wash hand basin and WC.

## Outside

## Rear Garden

This manageable and stylish garden is ideal for entertaining.

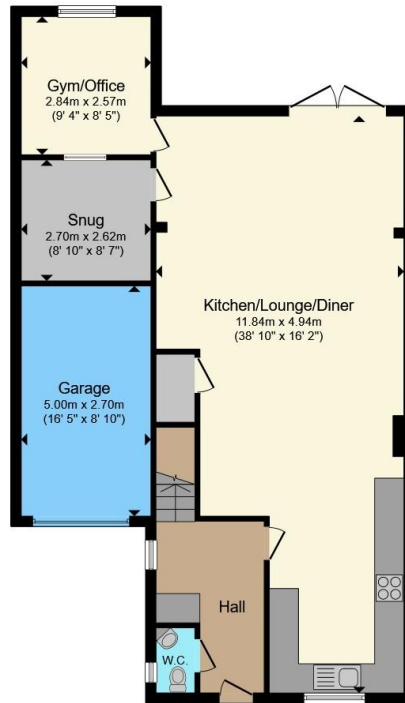
## Garage

With parking for two further cars.









**Ground Floor**



**First Floor**

Total floor area 149.5 m<sup>2</sup> (1,609 sq.ft.) approx

This floor plan is for illustrative purposes only. It is not drawn to scale. Any measurements, floor areas (including any total floor area), openings and orientation are approximate. No details are guaranteed, they cannot be relied upon for any purpose and they do not form part of any agreement. No liability is taken for any error, omission or misstatement. A party must rely upon its own inspection(s). Powered by [www.propertybox.io](http://www.propertybox.io)



To view this property please contact Connells on

**T 01980 622 662**

**E [amesbury@connells.co.uk](mailto:amesbury@connells.co.uk)**

Unit 3 23 Salisbury Street AMESBURY  
SALISBURY SP4 7AW

EPC Rating: C Council Tax  
Band: E

Tenure: Freehold

**view this property online [connells.co.uk/Property/ABY308689](http://connells.co.uk/Property/ABY308689)**



1. MONEY LAUNDERING REGULATIONS Intending purchasers will be asked to produce identification documentation at a later stage and we would ask for your co-operation in order that there will be no delay in agreeing the sale. 2. These particulars do not constitute part or all of an offer or contract. 3. The measurements indicated are supplied for guidance only and as such must be considered incorrect. Potential buyers are advised to recheck measurements before committing to any expense. 4. We have not tested any apparatus, equipment, fixtures, fittings or services and it is in the buyers interest to check the working condition of any appliances.

Connells Residential is registered in England and Wales under company number 1489613, Registered Office is Cumbria House, 16-20 Hockliffe Street, Leighton Buzzard, Bedfordshire, LU7 1GN. VAT Registration Number is 500 2481 05.

**See all our properties at [www.connells.co.uk](http://www.connells.co.uk) | [www.rightmove.co.uk](http://www.rightmove.co.uk) | [www.zoopla.co.uk](http://www.zoopla.co.uk)**

Property Ref: ABY308689 - 0005