
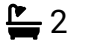





HOMES BY VICTORIA
ESTATE AGENCY

Plot 11 - Castle View, Alcester Road, Studley, B80 7PD

Offers Over £390,000

 3  2  1



Step into a world where heritage meets modern living, welcome to Castle View Barns – An exclusive new development on the outskirts of Studley village, offering just eight beautifully converted Victorian brick barns. With characterful exteriors and thoughtfully designed interiors, these homes capture the perfect balance of timeless charm and contemporary elegance.

[homesbyvictoria.co.uk](https://www.homesbyvictoria.co.uk)

victoria@homesbyvictoria | 07833 136521

FOR M HOMES MIDLANDS LIMITED trading as Homes By Victoria Company Number: 13688840 VAT no: 470190115



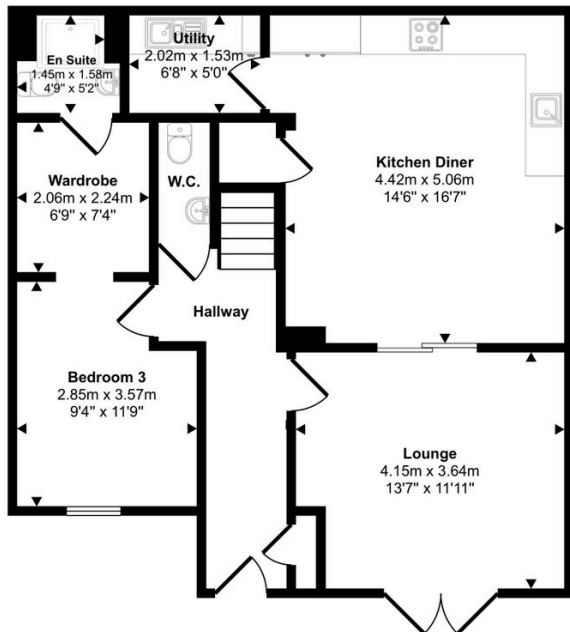
HOMES BY VICTORIA
ESTATE AGENCY



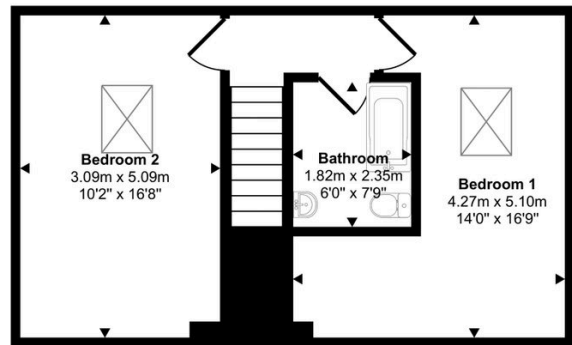
Key Features

- CASTLE VIEW BARNs IN THE HEART OF STUDLEY
- CONTEMPORARY STEEL FRAMED BARNs WITH HIGH SPECIFICATION INTERIOR
- THREE BEDROOMS
- PRINCIPLE BATHROOM WITH PORCELANOSA TILING
- TARMACADAM DRIVEWAY
- LUXURIOUS ELECTRONIC GATED DEVELOPMENT
- OPEN PLAN LIVING
- MASTER BEDROOM WITH EN-SUITE
- RADIATING CHARACTER, CHARM AND CONTEMPORARY ELEGANCE
- PRIVATE LANDCAPED GARDENS

Approx Gross Internal Area
116 sq m / 1248 sq ft



Ground Floor
Approx 73 sq m / 784 sq ft



First Floor
Approx 43 sq m / 464 sq ft

This floorplan is only for illustrative purposes and is not to scale. Measurements of rooms, doors, windows, and any items are approximate and no responsibility is taken for any error, omission or mis-statement. Icons of items such as bathroom suites are representations only and may not look like the real items. Made with Made Snappy 360.