

Property ref: 80171

## Hewitt, Reading, RG1 7LY

£1,705 PCM

**HASLAM'S**  
Lettings



A modern, two bedroom, fifteenth floor apartment in this impressive town centre development. Located within close proximity to Reading mainline station and The Oracle shopping centre.

Reading Borough Council tax band D.

Broadband/Mobile Info: Connections available. For an indication of specific speeds and supply of Broadband and Mobile, we advise applicants go to the Ofcom website Broadband and Mobile Coverage Checker.

**Available 02/08/2026**

- Modern two bedroom apartment; Sundry payment of £70pcm on top of the rent to cover hot water and heating via communal boiler
- Open plan living room/kitchen with wood flooring
- Fully fitted kitchen with integrated appliances
- Main family bathroom and en-suite shower room
- Allocated parking; EPC rating C
- Furnished; Managed by LANDLORD

\*Fees For Assured Periodic Tenancies: when you rent a property from us you will be required to pay a sum equivalent to one weeks' rent for a holding deposit. Upon successful application, this amount will be off set against your first months' rent. You will also be required to pay a security deposit equivalent to 5 weeks' rent which will be held and protected in line with Deposit legislation. For more information about our fees please visit: [www.haslams.net](http://www.haslams.net)  
Fees for all other tenancies (Non Housing Act Tenancies / Company Lets): when you rent a property from us we will charge you a one-off fee per property. This charge is the equivalent of 15 days of the monthly rental charge (+VAT) with a minimum fee of £450 (inc.VAT) up to a maximum of £650 (inc.VAT). Other fees may apply depending on your circumstances.

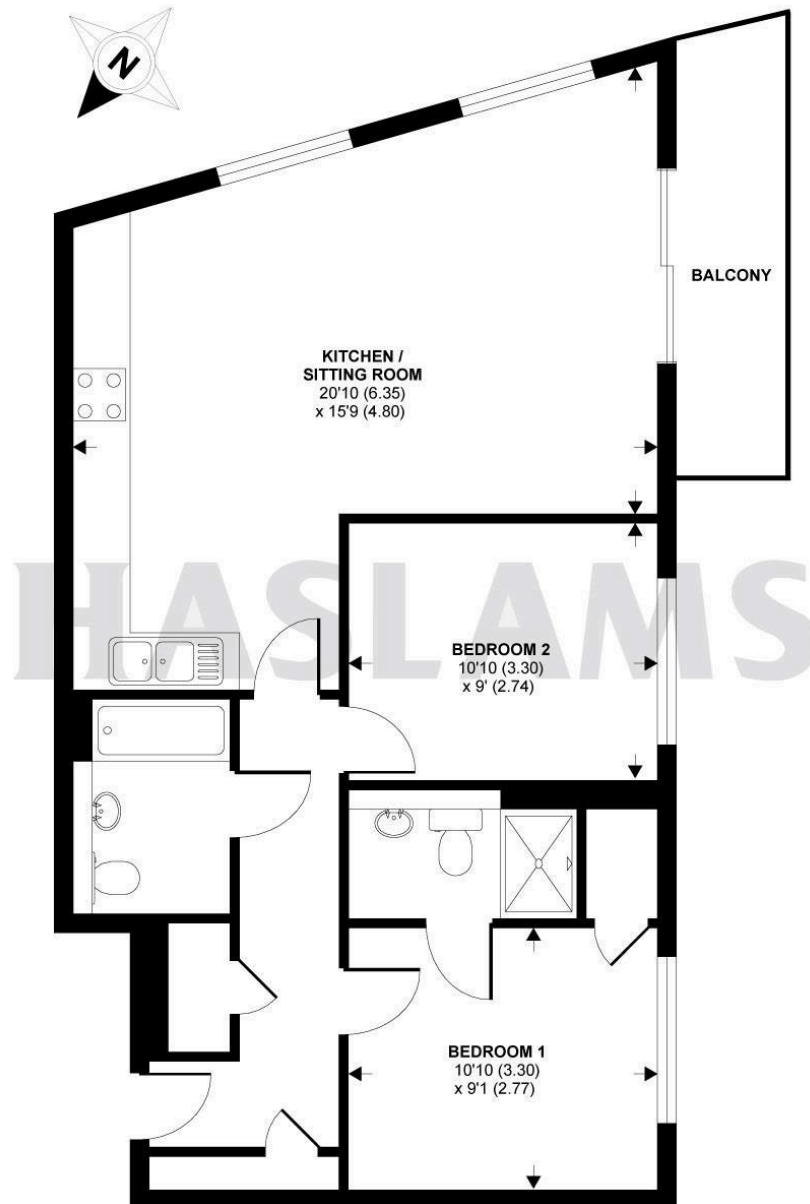
**0118 960 1055**

**[lettings@haslams.net](mailto:lettings@haslams.net) [www.haslams.net](http://www.haslams.net)**

**Haslams Estate Agents Ltd, 159 Friar Street, Reading, Berkshire, RG1 1HE**

## Hewitt, Alfred Street, Reading, RG1

APPROX. GROSS INTERNAL FLOOR AREA 724 SQ FT 67.2 SQ METRES



Whilst every attempt has been made to ensure the accuracy of the floor plan contained here, measurements of doors, windows and rooms are approximate and no responsibility is taken for any error, omission or misstatement. These plans are for representation purposes only as defined by RICS Code of Measuring Practice and should be used as such by any prospective purchaser. Specifically no guarantee is given on the total square footage of the property if quoted on this plan. Any figure given is for initial guidance only and should not be relied on as a basis of valuation.

Copyright nichecom.co.uk 2015 Produced for Haslams REF : 72523