



2 Greendykes Steadings, Broxburn

Offers Over £215,000





Nestled within the peaceful enclave of Greendykes Steading development and just a short stroll from the vibrant town centre, this exceptional three bedroom end terrace house offers a harmonious blend of contemporary elegance and practical living. Upon entering, you are greeted by a welcoming hallway that leads to the heart of the home - a stunning open plan lounge and sun room. This expansive space is beautifully illuminated by generous picture windows, allowing natural light to cascade throughout and creating a warm, inviting atmosphere perfect for both relaxation and entertaining. The modern high gloss fitted kitchen is thoughtfully designed with sleek cabinetry and a stylish breakfast bar, making it an ideal spot for morning coffee or casual dining. The contemporary designed Bathroom is located on the lower level providing a stylish and modern Three piece suite. Ascending the turn-staircase leads to the upper level which offers three Bedrooms which are well-proportioned, offering ample space for restful retreats or versatile use as a home office or guest room. Residents will appreciate the practicality of an allocated parking space located directly at the front door, with additional visitors parking available, ensuring convenience for both homeowners and guests.

The property's position within this sought-after Steading development further enhances its appeal, providing a tranquil setting while maintaining easy access to local amenities, transport links, and highly regarded schools. Every detail has been carefully considered to deliver a home that is as functional as it is stylish, making this a fabulous opportunity to secure a premium residence in one of the area's

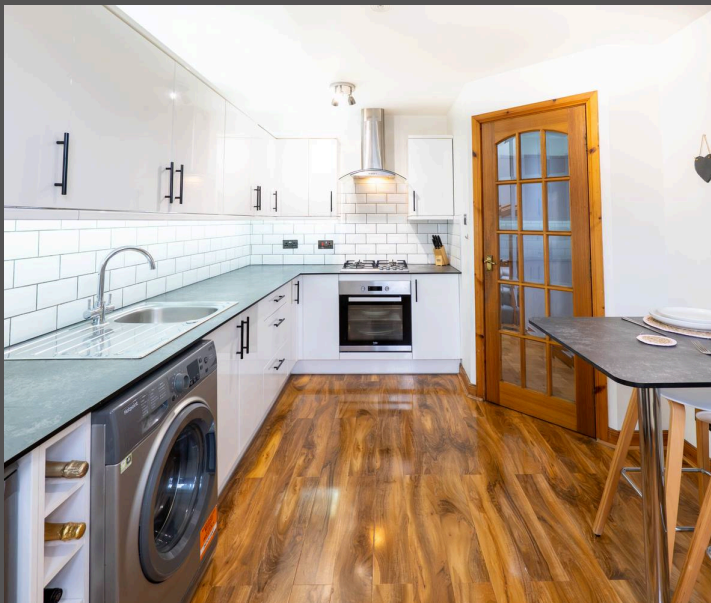


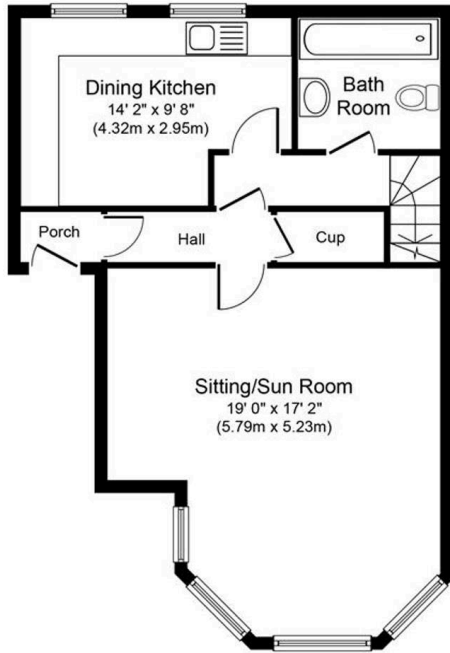
2 Greendykes Steadings

Broxburn, Broxburn

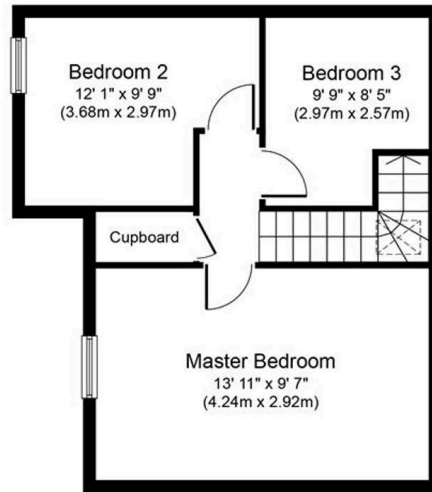
- Three Bedroom End Terrace House set within Greendykes Steading
- Idyllic setting within walking distance to Town Centre
- Private South-East facing garden with open views
- Modern High Gloss Fitted Kitchen cabinetry with Breakfast Bar
- Contemporary Three piece Bathroom Suite
- Fabulous open plan Lounge/Sun Room bathed with picture windows offering bountiful natural light
- Private fully enclosed rear garden
- Allocated Parking Space and Visitors Parking

Stylish Three Bedroom End Terrace House located within an exclusive Steadings Development. The property features open plan Lounge/Sun room, Modern White High Gloss Fitted Kitchen, Contemporary designed Bathroom. Private sunny aspect garden. Allocated parking. Located within a tranquil yet central location near schools and amenities.





Ground Floor
Approximate Floor Area
560 sq. ft.
(52.0 sq. m.)



First Floor
Approximate Floor Area
445 sq. ft.
(41.3 sq. m.)

Whilst every attempt has been made to ensure the accuracy of the floor plan contained here, measurements of doors, windows, rooms and any other items are approximate and no responsibility is taken for any error, omission, or mis-statement. This plan is for illustrative purposes only and should be used as such by any prospective purchaser or tenant. The services, systems and appliances shown have not been tested and no guarantee as to their operability or efficiency can be given.
 Copyright V360 Ltd 2018 | www.houseviz.com





KnightBain Estate Agents

Knightbain, 4 Greendykes Road, Broxburn - EH52 5AG

01506 852000

info@knightbain.co.uk

www.knightbain.co.uk/

