



Roger  
Parry  
& Partners

Marche Manor, Marche Lane  
Halfway House, Shropshire, SY5 9DE



## Marche Manor, Marche Lane, Halfway House, Shropshire, SY5 9DE

Set amidst approximately 7 acres of glorious, landscaped grounds, Marche Manor is a truly spectacular country residence whose origins trace back to the early 16th century. This striking black-and-white period home is rich in heritage, character and timeless elegance, offering a rare opportunity to own a property of remarkable stature and charm.

Approached via a long private driveway, the Manor impresses with its commanding presence and picturesque setting. Inside, a wealth of original features creates an atmosphere of warmth and grandeur, from exposed beams and leaded windows to oak floorboards, wood panelling and beautifully ornate fireplaces. The interiors balance historic splendour with comfortable family living, with magnificent reception rooms designed for entertaining alongside more intimate spaces perfect for relaxed evenings by the fire. With two separate staircases serving different wings of the house, the layout also lends itself beautifully to multigenerational living or private guest accommodation.

Outside, the grounds are every bit as impressive as the house itself. Manicured lawns, mature trees and richly planted borders create a sense of peace and privacy, while “Kate’s” walled garden provides an enchanting setting for summer dining and drinks parties. Elevated viewpoints offer far-reaching vistas towards the Breidden Hills, while the lake provides a tranquil focal point, complete with rowing opportunities and abundant wildlife. A large lawn, once the estate’s tennis court and now used as a helipad, adds yet another touch of distinction.

Perfectly positioned near Halfway House, approximately ten miles from both Shrewsbury and Welshpool, Marche Manor combines rural serenity with excellent access to two thriving market towns. Marche Manor is the complete country dream. Historic, elegant, private and utterly breathtaking. A home of rare beauty and refined prestige.

---







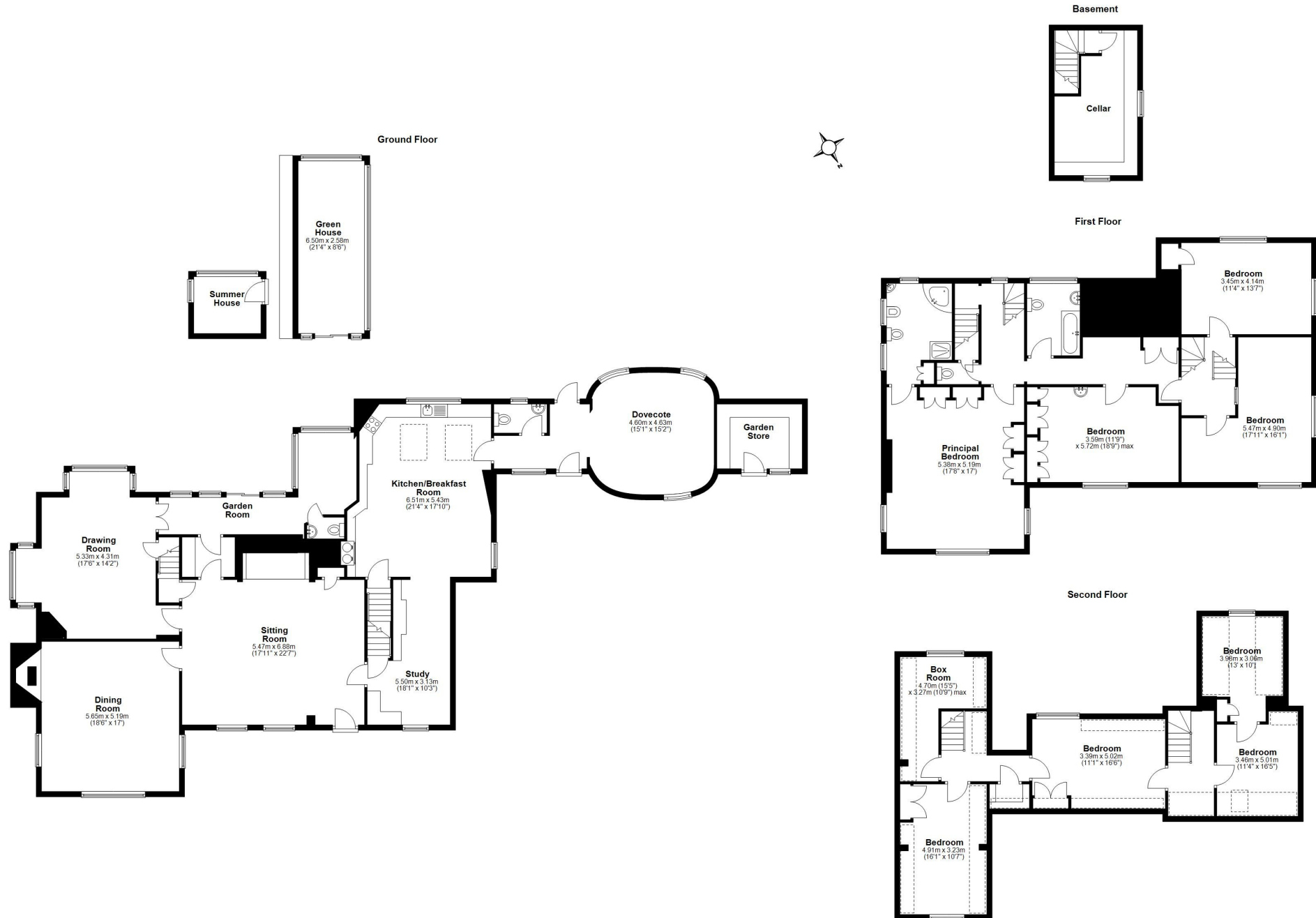
## Marche Manor

Marche Manor is a house of rare charm and considerable distinction: an exquisite black-and white period residence understood to date from circa 1520, with a later extension bearing a gable finial inscribed 1604. Approached by way of a private drive and set amidst enchanting gardens and beautifully kept grounds, it is a property that combines historic pedigree with an atmosphere of warmth, grace and quiet grandeur. The house is wonderfully rich in character, with a broad selection of architectural details that speak eloquently of its heritage. Exposed beams, leaded windows, mellow oak floors, decorative panelling and splendid fireplaces are found throughout, creating interiors of immense depth and personality. The accommodation has evolved to provide a harmonious balance of elegant reception rooms and comfortable family spaces, equally suited to large scale entertaining or intimate everyday life. The sitting room is particularly captivating, arranged around a magnificent inglenook fireplace with decorative panelling above, original bench seating and the original front door still in place.



# Floorplan

(not to scale - for identification purposes only)



Artist's impression, for illustration purposes only. All measurements are approximate.  
Not to Scale. www.propertyphotographic.com.  
© Drew Cole 07973 226 007.  
Plan produced using PlanUp.

Marche Manor KAD



From here, views extend across the gardens to the front of the house, lending the room a restful and picturesque outlook. The dining room is no less atmospheric, with its own inglenook fireplace and wood-burning stove, together with a carved overmantel incorporating an original landscape painting. The drawing room is a room of notable elegance, with twin bay windows, window seats, handsome panelling and French doors opening into the L-shaped garden room. With its tiled floor and glorious aspect over the gardens and central water feature, this is a delightful space in which to sit through the seasons. Beyond the sitting room lies the library, leading onwards to the kitchen and breakfast room, which spans the full width of the house. Light-filled and generously proportioned, this beautifully conceived space is fitted with bespoke David Orton cabinetry, granite work surfaces, a two-oven AGA and an additional double electric oven with ceramic induction hob. Of particular note is the converted dovecote, with exposed beams and an octagonal roof, accessed via a boot and utility room with cabinetry crafted to fit the room's unique form.





A staircase rises from the sitting room to the first-floor landing, where panelled walls continue the home's sense of heritage and refinement. The principal bedroom enjoys a triple aspect overlooking the gardens and benefits from fitted David Orton wardrobes and an ensuite bathroom with built-in cupboards.



Also on this floor are a family bathroom, two further double bedrooms, and a separate sitting room or study which could, if desired, serve as an additional bedroom. The second floor offers further generous and adaptable accommodation, comprising a double bedroom with adjoining dressing room, two additional bedrooms, a useful storage cupboard and a box room with fitted shelving.



Ideal as a teenage retreat, guest quarters or dedicated home-working space, it provides yet more versatility to this most handsome and deeply appealing country house.



---

## The Grounds

The gardens and grounds at Marche Manor are of exceptional beauty, carefully nurtured to achieve a landscape that feels both wonderfully natural and elegantly timeless. They capture the enduring charm of the quintessential country garden, precisely laid out for seasonal enjoyment, with each vista appearing to have been thoughtfully chosen.

A broad central lawn forms the heart of the garden, enclosed by richly stocked borders abundant with colour, texture and scent. Nearby, “Kate’s” walled garden provides a particularly enchanting retreat, centred around a distinguished Hartley greenhouse with adjoining cold frames. A raised brick bed runs along the warm south-facing wall, where climbing fruit trees flourish, creating a productive and picturesque setting perfectly suited to relaxed summer lunches and elegant outdoor entertaining. From here, wide stone steps rise to a gravel terrace and pathway that encircle the house, affording glorious views across the surrounding grounds.

Beyond, the gardens continue upwards to a magnificent border stretching the full length of the terrace, planted with an impressive collection of rhododendrons and azaleas. Lawned steps lead gently to a secluded seating area, from which one may enjoy sweeping views over the Breiddens and the orchard beyond. The lake is a feature of rare tranquillity, providing both a focal point of great beauty and a flourishing haven for wildlife. At its centre sits a charming duck house, while the banks are softened by newly planted ornamental trees and, in spring, a dazzling carpet of bluebells and daffodils. The principal lawn, formerly laid out as tennis courts, is now used as a helipad, lending an added sense of occasion to the estate. Privately positioned away from the house, the summer house is a delightful retreat, accompanied by an arbour, a sheltered seating area and a striking 13-metre rose arch, through which magnificent views are framed towards the Stiperstones.

An additional 4.1 acres is available by separate negotiation.

## Services

The property’s central heating system, hot water and Aga are oil-fired. There is mains electricity to the property. The water supply is spring fed and the drainage is privately owned (septic tank). Mains water is available by the driveway entrance (installation required). Standard broadband is available and all major mobile network providers offer coverage in the local area.

## Location

Marche Manor enjoys a delightful setting in the heart of the Shropshire countryside, surrounded by rolling farmland and some of the county’s most appealing scenery, yet within convenient reach of the historic county town of Shrewsbury, approximately ten miles away. For everyday needs, the nearby villages of Halfway House, Middletown and Westbury are close at hand, offering a village shop, post office, doctor’s surgery and traditional public house.

Just a short drive from the property, the impressive Rowton Castle offers a fitness suite, swimming, spa and sports courts, with membership available.

---

Few county towns can rival the appeal of Shrewsbury, gracefully encircled by the looping waters of the River Severn and celebrated for its wealth of Tudor architecture, cobbled streets and vibrant independent spirit. Long associated with Charles Darwin, the town provides an excellent selection of boutiques, restaurants and cultural attractions, including Theatre Severn.

The celebrated Quarry, one of the country's finest town parks, hosts a lively programme of events throughout the year. Schooling in the area is particularly well regarded, with an excellent range of independent and state options including Shrewsbury School, Shrewsbury High School, Moreton Hall, Packwood Haugh and Priory School.

Shrewsbury also has an excellent selection of local and National transport links including both Bus and Train Stations, for routes to Birmingham, Crewe and Manchester, and the A5 and M54 provide road routes to Major road networks including the M6 and M56. For those who value both country pursuits and town

convenience, the position is difficult to better. The surrounding countryside offers an abundance of footpaths, bridleways and glorious walking country, while Shrewsbury provides all the pleasures of a thriving market town. Altogether, Marche Manor offers a rare opportunity to enjoy an enviable rural way of life without compromise.

### Directions

From Shrewsbury take the A458 at the Churncote Roundabout towards Welshpool. Go through the village of Ford and Wattlesborough, before turning left signposted Marche and Vennington. Continue on this lane for approximately 1 mile and Marche Manor may be found on your right hand side.







**General Services:** Oil-fired central heating, hot water and Aga, spring fed water supply, mains electricity, Private drainage - septic tank

**Local Authority:** Shropshire

**Council Tax Band:** G

**EPC Rating:** Exempt

**Tenure:** Freehold

**Fixtures and fittings:** No fixtures and fittings are necessarily included in the sale unless agreed at point of sale or point of subsequent negotiations.

**Wayleaves, rights of way and easements:** The property will be sold subject to and with the benefit of all wayleaves, easements, and rights of way, whether mentioned in these particulars or not.

#### Directions:

From Shrewsbury take the A458 at the Churncote Roundabout towards Welshpool. Go through the village of Ford and Wattlesborough, before turning left signposted Marche and Vennington. Continue on this lane for approximately 1 mile and Marche Manor may be found on your right hand side.

**Birmingham - 60 miles**

**Liverpool - 75 miles**

**Manchester - 90 miles**

*What3Words Reference: ///synthetic.tractor.chariots*

#### Viewing arrangements

Viewing of the property is strictly by appointment only through:

Roger Parry & Partners LLP

Please contact our Shrewsbury Office:

9&10 Mercian House, Darwin Court, Oxon Business Park, Shrewsbury,

SY3 5AL

joshgray@rogerparry.net

01743 791 336



Important Notice: 1. Nothing in these particulars shall be deemed to be a statement that the property is in good structural condition or otherwise nor that any of the services, appliances, equipment or facilities are in good working order. Purchasers should satisfy themselves of this prior to purchasing. 2. Any areas, measurements, aspects or distances referred to are given as a GUIDE ONLY and are NOT precise. If such details are fundamental to a purchase, purchasers must rely on their own enquiries. 3. Descriptions of the property are subject and are used in good faith as an opinion and NOT as a statement of fact. Please make further enquiries to ensure that our description is likely to match any expectations you may have. 4. Where any references are made to a planning permission or potential uses such information is given by Roger Parry & Partners in good faith. Purchasers should make their own enquiries into such matters prior to the purchase. 5. The photograph(s) depict only certain parts of the property. It should not be assumed that any contents/furniture etc. photographed are included in the sale. It should not be assumed that the property remains as displayed in photograph(s). No assumptions should be made with regards to parts of the property that have not been photographed. 6. These sale particulars have been prepared in all good faith to give a fair overall view of the property. If any points are particularly relevant to your interest in the property, please ask for further information.