



Price

£340,000

Freehold

2x  2x  1x 

Jury Drive, Chattenden,
Rochester, Kent, ME3

OVER 60?

Secure this property
for up to **59% less!**

Wards
Helping you move forwards



Main features

- An immaculate home within a sought after development
- Originally built by Esquire Homes and tucked away in a quiet village location
- Easy access for transport links to the A2/M2
- Driveway for 2 cars
- En-suite shower room and a handy downstairs toilet
- Modern landscaped garden with barbecue area
- Perfect for first time buyers

Accommodation

GROUND FLOOR

Entrance Hall
Toilet
Lounge : 13'11 x 10'8 (4.24m x 3.25m)
Kitchen/Diner : 14'3 x 11'11 (4.35m x 3.63m)

FIRST FLOOR

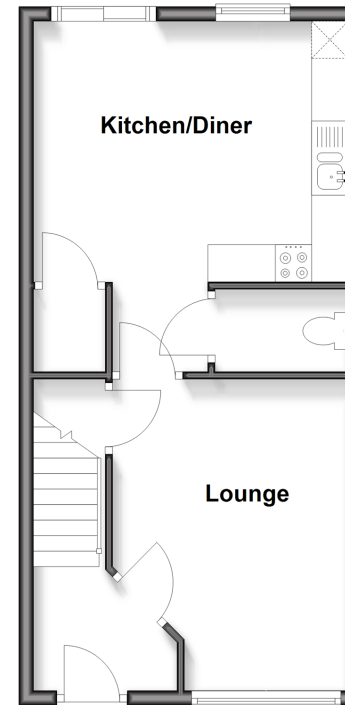
Landing
Bedroom 1: 12'6 x 10'3 (3.81m x 3.13m)
En-Suite Shower Room
Bedroom 2 : 14'2 x 10'2 (4.32m x 3.10m)
Bathroom : 7'0 x 7'0 (2.14m x 2.14m)

OUTSIDE

Driveway
Front Garden
Rear Garden

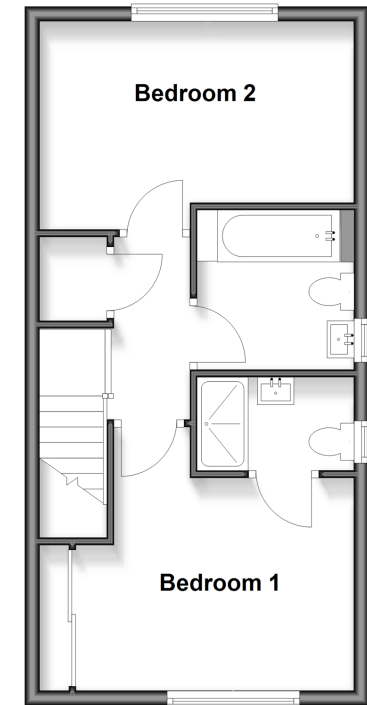
Ground Floor

Approx. 38.9 sq. metres (418.9 sq. feet)



First Floor

Approx. 39.3 sq. metres (423.1 sq. feet)



Call Strood - 01634 716597 ■ wardsof Kent.co.uk

■ Through a Homewise Home For Life Plan people aged 60+ can secure this property for up to 59% less, by purchasing a Lifetime Lease



11846871/20260321/DV/CM