



LEASEHOLD

Flat

SPACIOUS TWO-BEDROOM APARTMENT WITH PARKING IN POPULAR

Offers In Excess Of

£500,000

FEATURES

- Large living room
- 2 double bedrooms
- Private car park
- Separate kitchen
- 2 bathrooms (1 en-suite)
- Secure flat with alarm



2 Bedroom Flat located in Edgware

Space Residential are delighted to present this ground floor (no steps), well-proportioned and secure apartment located in this popular Gibbs Green development, midway between Edgware & Mill Hill town centres.

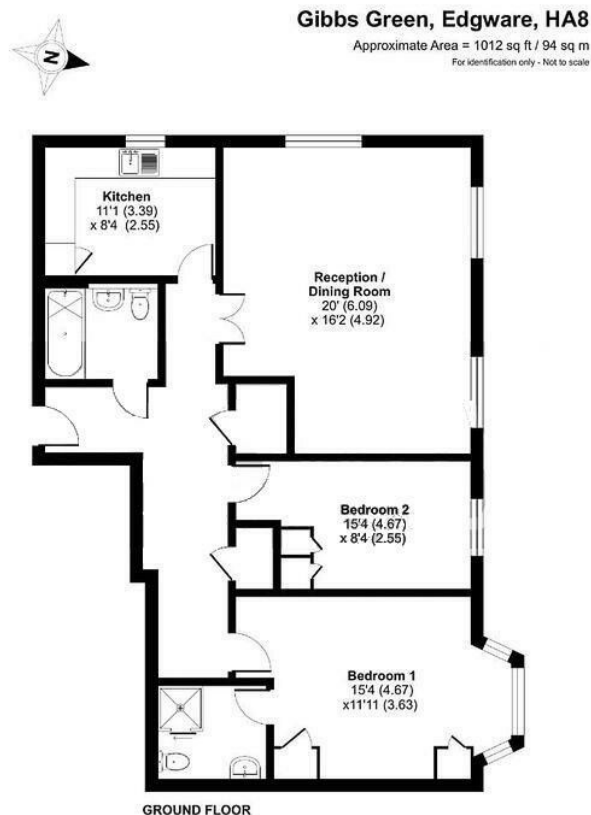
The property boasts a generous living room, providing an ideal entertaining space, alongside a separate fully fitted kitchen.

There are two double bedrooms, including a master bedroom with en-suite, in addition to a second bathroom.

Further benefits include a private parking space approached by a secure gated entrance and a secure entry system with alarm into the flat, ensuring peace of mind for residents.

An excellent opportunity for first-time buyers, or those looking to downsize, set within a well-connected and desirable location.

Contact Space Residential to arrange a viewing!



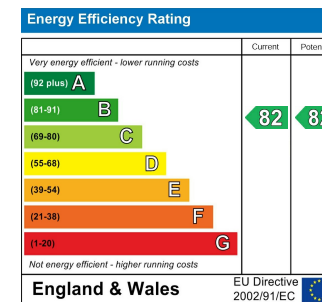
Call us on

0208 906 2222

info@spaceresidential.com
spaceresidential.com

Council Tax Band

E



Agents Note: Whilst every care has been taken to prepare these particulars, they are for guidance purposes only. All measurements are approximate and are for general guidance purposes only and whilst every care has been taken to ensure their accuracy, they should not be relied upon and potential buyers are advised to recheck the measurements.

