



Chalton Street, NW1

£599,950

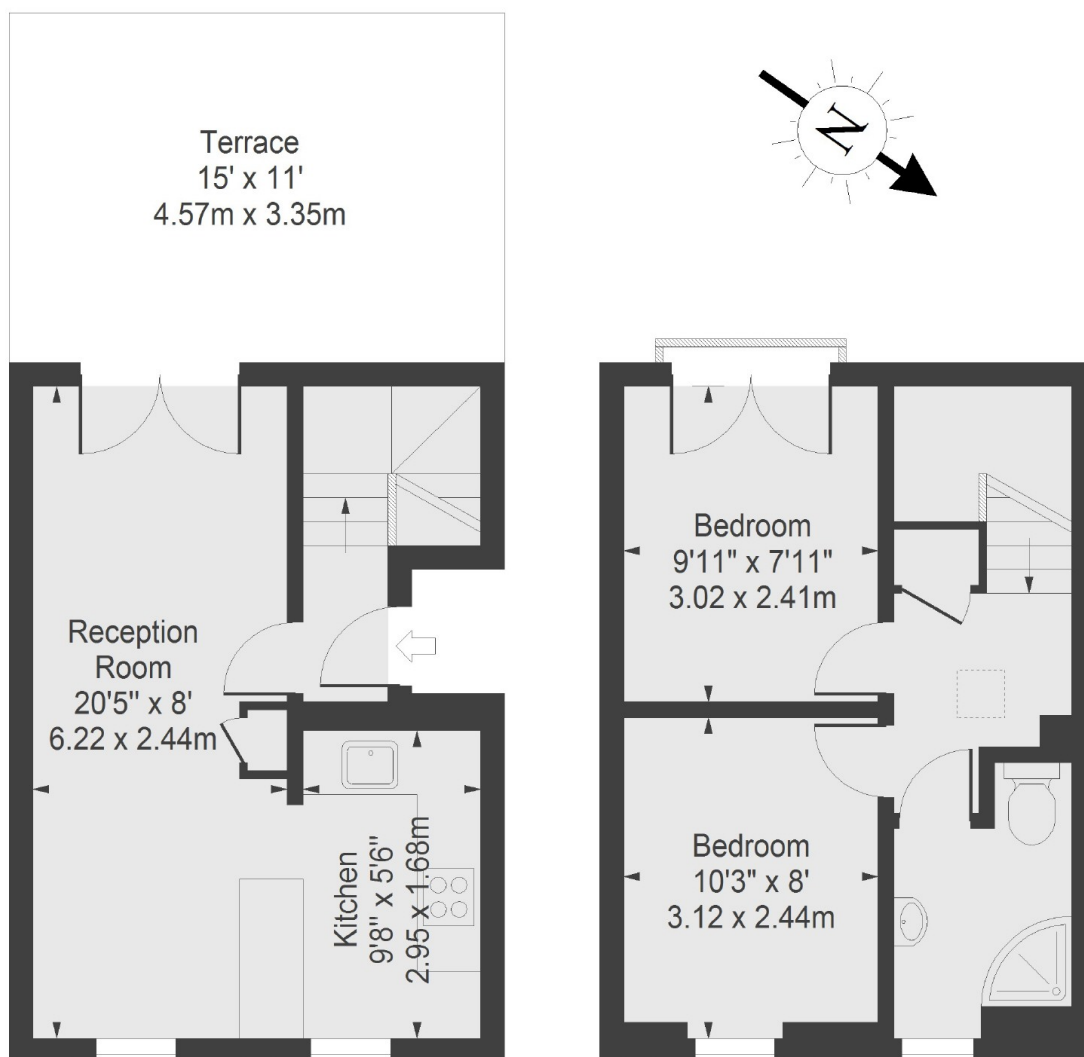
Ideally located on the ever-so-quiet Chalton Street and within walking distance of two of the largest rail stations in the UK, this is an outstanding opportunity to purchase a split level two bedroom flat together with a private roof terrace. Excellent fibre Internet with 400 Mbps download and 230 Mbps upload speeds.

Chalton Street is located within easy reach of the multiple shopping, transport and entertainment facilities of both Camden Town and Bloomsbury.

Features

- Split Level
- Leasehold
- Two Bedrooms
- Good Condition
- Private Roof terrace
- Excellent transport Links

Chalton Street, London, NW1



Second Floor

Third Floor

CHALTON STREET

Total Approx. Floor area 555 Sq Ft. (51.56 Sq M)