



Belgrade Road, N16

£1,350,000

This beautifully presented four-bedroom family home is set on a charming residential street in the heart of Stoke Newington. Arranged over three floors, the property has been thoughtfully designed throughout, featuring bespoke finishes and stylish interiors.

Belgrade Road is just a short walk to Stoke Newington overground station as well as Clissold Park and an array of shops, restaurants, cafés and other local amenities.

Features

- Four Bedroom House
- Private Secluded Garden
- Period Property
- Tree-lined Street
- Ample Storage
- Chain Free



Belgrade Road, N16

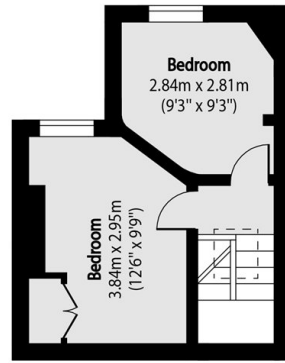
Upon entering, you are welcomed by an elegant reception room boasting high ceilings, original wooden flooring, a feature fireplace, and large south-facing bay windows fitted with bespoke shutters, allowing natural light to flood the space.

The bright and contemporary kitchen diner opens effortlessly onto a private, secluded garden through sleek bi-folding doors, creating the perfect space for indoor-outdoor living and entertaining.

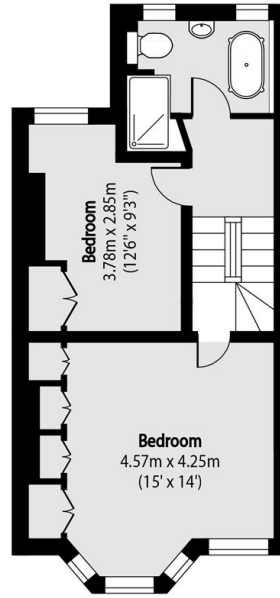
The upper floors comprise a generous principal bedroom with ample fitted storage, a further double bedroom overlooking the rear garden, a third well-proportioned bedroom, and a top-floor fourth bedroom with built-in storage. The property is completed by a beautifully finished family bathroom featuring a walk-in shower and freestanding bath.



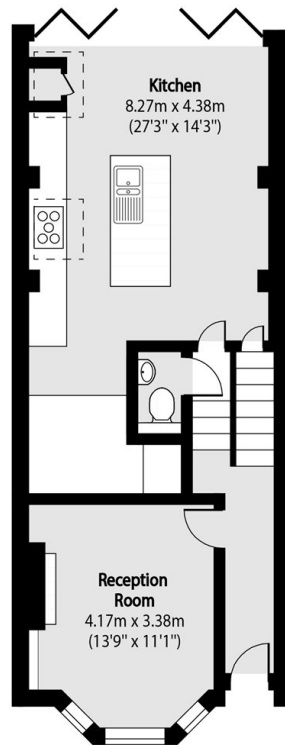
Belgrade Road, London, N16



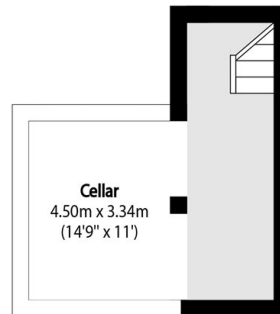
Second Floor



First Floor



Ground Floor



Cellar

Total area (approx): 125.11 sq m (1347 sq. ft)

(Excluding Cellar)

Cellar Total area (approx): 9.24 sq m (99 sq. ft)