



## Western Gateway, E16

£426 Per week

A one bedroom apartment on the fifth floor of this sought after development. This bright apartment has an open plan reception room, dock views, wooden flooring, a concierge and gym.

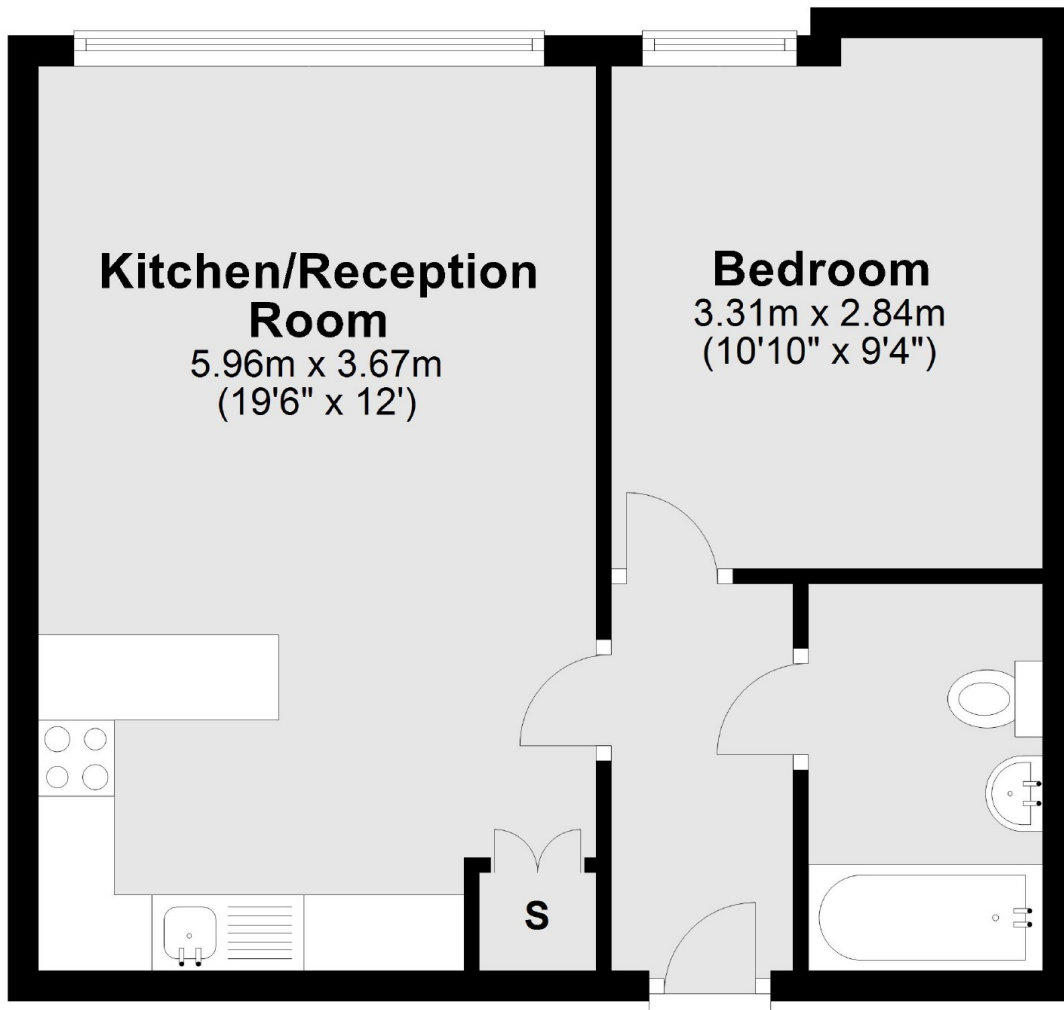
Capital East Apartments is well located for the water sports, bars, and restaurants of Royal Victoria Docks including the popular China Palace.

### Features

- One Bedroom
- Dock Views
- Wooden Flooring
- Concierge
- Furnished
- Residents Gym

**Western Gateway,  
London, E16**

**(Unknown Floor)**



Total area: approx. 39.6 sq. metres (426.2 sq. feet)