



8 Shore Road, Poole, BH13 7PH

£8,500 Per Month

TO LET



EST. 1977

KEY DRUMMOND

ESTATE AGENTS

THE PROPERTY

An exceptional contemporary coastal home finished to a high standard, offering breath-taking panoramic views across Poole Harbour. Positioned in one of the area's most sought-after locations, this impressive residence combines luxury living with outstanding entertaining space across two beautifully designed floors.

Accessed via electronically operated gates, the property features a striking reception hall leading to a spectacular principal reception room with uninterrupted harbour views. The open-plan kitchen and dining area is flooded with natural light through expansive glazing, creating the perfect setting for modern family living and entertaining.

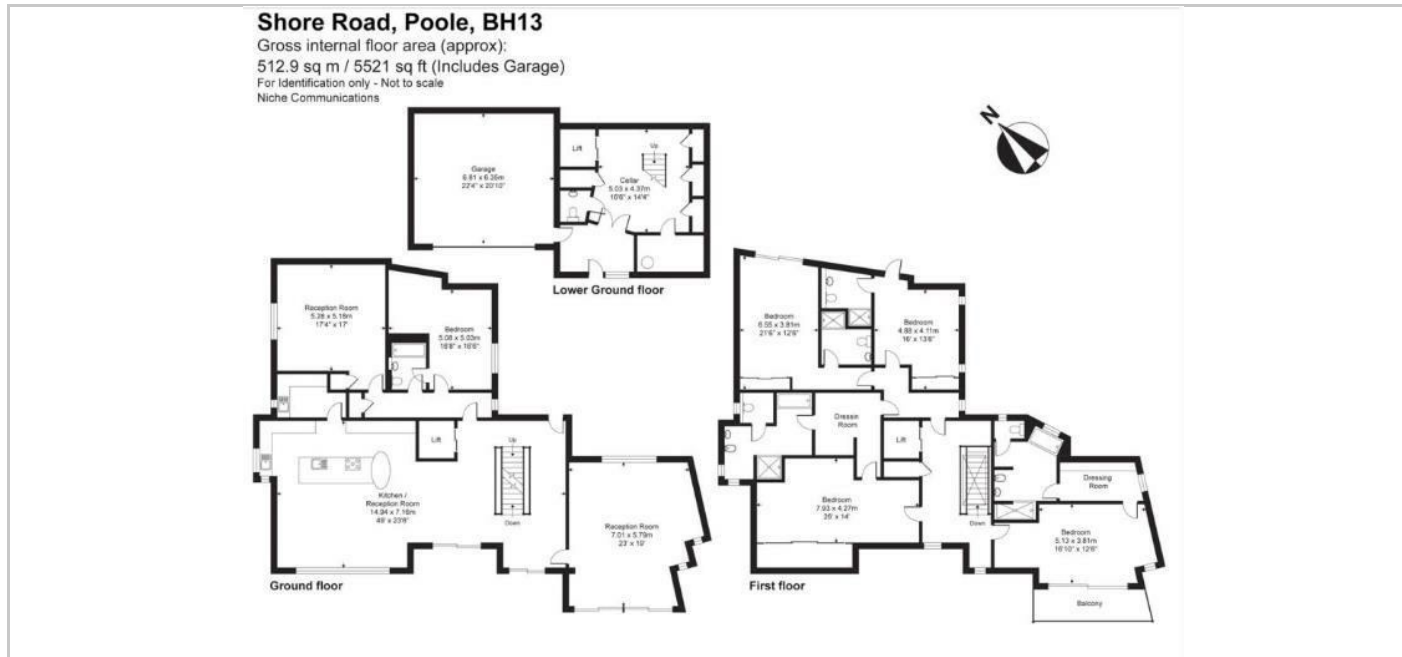
The home offers five luxurious ensuite bedrooms, including two stunning master suites with dressing rooms, balconies, and sea views. Additional highlights include a feature glass staircase, lift access from the lower ground floor to the first floor, secondary reception room, double garage, cellar, and beautifully landscaped gardens.

Ideally located just moments from Sandbanks beach, local shops, and renowned waterfront dining, the property also benefits from excellent transport links to London via Bournemouth and Poole mainline stations.

Key Features

- Exceptional views across Poole Harbour
- Contemporary design finished to a high specification
- Five ensuite bedrooms
- Two master suites with dressing rooms and balconies
- Lift access across multiple floors
- Open-plan kitchen/dining space
- Beautifully landscaped gardens
- Double garage and cellar
- Approx. 5,521 sq ft
- EPC Rating: B

SITUATION



Directions