



WOODHILL, SE18

£285,000

Flat
One bedroom
One bathroom
Chain free
Parking
Energy rating: c

@marshandparsons
marshandparsons.co.uk

MARSH &
PARSONS



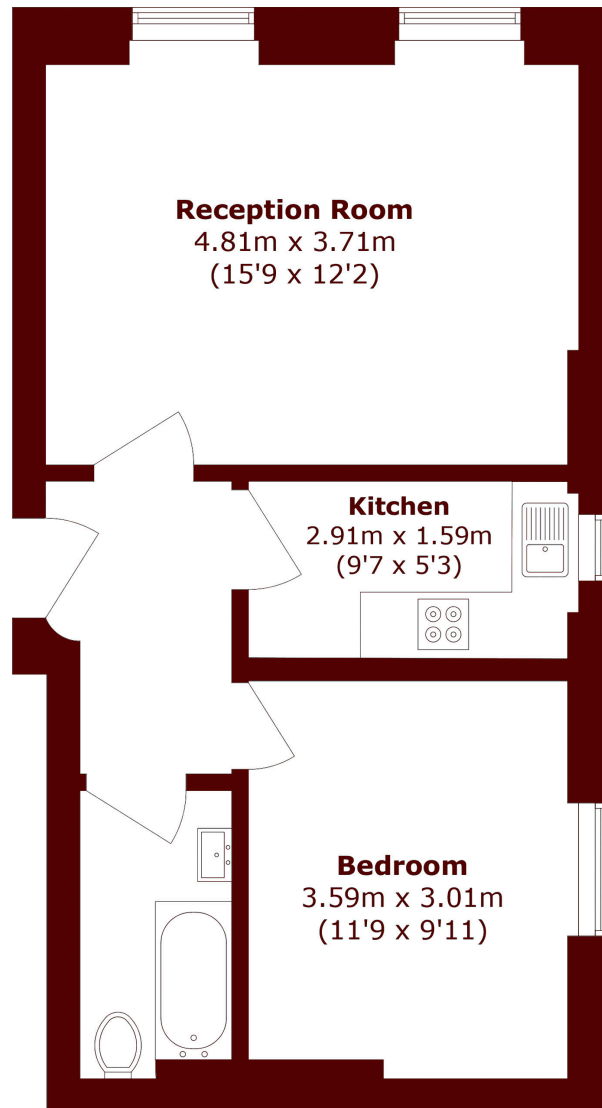
ABOUT THE PROPERTY

Newly decorated one bedroom conversion flat in a stunning detached Georgian house. Accessed via a stairway and arched entrance, it features high ceilings, original wooden flooring, and large arched sash windows with shutters overlooking the front. Includes an integrated kitchen, spacious double bedroom, and a contemporary bathroom with shower over bath, currently being further improved.

Close to Woolwich, Charlton, and Greenwich/Blackheath for shops, dining, and parks. Just a 5 minute walk to Woolwich Dockyards station, with easy access to Woolwich Arsenal and the Elizabeth line.



STEP INSIDE WOODHILL



Total area (approx.): 43.8 sq. m (471.4 sq. ft)

Charlton
020 8293 0454

Energy Rating: C We aim to make our particulars both accurate and reliable. However, they are not guaranteed; nor do they form part of an offer or contract. If you require clarification on any points then please contact us, especially if you're traveling some distance to view. Please note that appliances and heating systems have not been tested and therefore no warranties can be given as to their good working order

**MARSH &
PARSONS**