



Price
£400,000

Freehold

3x  2x  1x 

**Coltsfoot Drive,
Weaving, Maidstone,
Kent, ME14**

OVER 60?

Secure this property
for up to **59% less!**

Wards
Helping you move forwards



Main features

- Offered chain free
- Excellent sized rear garden
- Large lounge/diner leading to the kitchen
- Garage and off-street parking
- Short drive to M20 motorway and Bearsted train station

Accommodation

GROUND FLOOR

- Entrance Hall: 13'0 x 3'0 (3.97m x 0.92m)
- Cloakroom: 5'0 x 2'1 (1.53m x 0.64m)
- Lounge: 14'10 x 10'0 (4.52m x 3.05m)
- Dining Area: 16'0 x 8'0 (4.88m x 2.44m)
- Kitchen: 7'1 x 6'0 (2.16m x 1.83m)

FIRST FLOOR

- Landing
- Bedroom 3: 8'0 x 6'0 (2.44m x 1.83m)
- Bedroom 2: 12'0 x 7'0 (3.66m x 2.14m)
- Bathroom: 6'1 x 5'0 (1.86m x 1.53m)
- Bedroom 1: 10'1 x 9'1 (3.08m x 2.77m)
- En-suite Shower Room: 5'0 x 3'0 (1.53m x 0.92m)

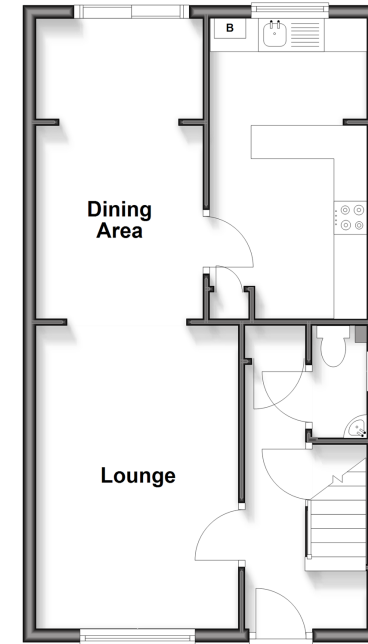
OUTSIDE

- Front & Rear Gardens
- Garage
- Off-Road Parking

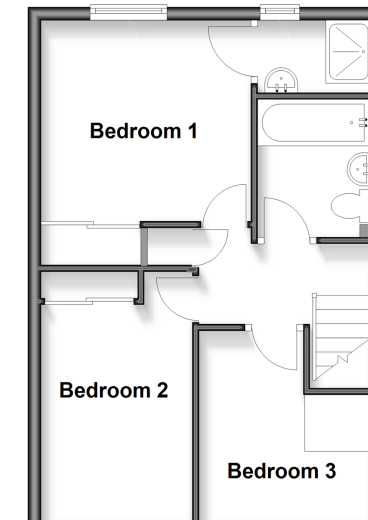
Call Bearsted - 01622 730955 ■ wardsof Kent.co.uk

- Legal advice should be taken to verify fixtures/fittings, planning, alterations and/or lease details
- Appliances & services are untested, dimensions are approximate and floor plans are not to scale
- Through a Homewise Home For Life Plan people aged 60+ can secure this property for up to 59% less, by purchasing a Lifetime Lease

Ground Floor
Approx. 46.2 sq. metres (497.4 sq. feet)



First Floor
Approx. 38.4 sq. metres (413.1 sq. feet)



12329379/20260109/LF/LNR