



Falcon

01752 600444

10 Upper Ridings

Plympton, Plymouth, PL7 5LD

Offers in Excess of £280,000





In Brief

3-bed end terrace with south-facing garden, driveway & prime Plympton cul-de-sac location

Reception Rooms Large living room with kitchen / diner

Bedrooms 3 bedrooms

Heating Gas central heating

Parking Driveway parking for 3 cars

Area 725 sq ft

Council Tax B

Tenure Freehold

Description

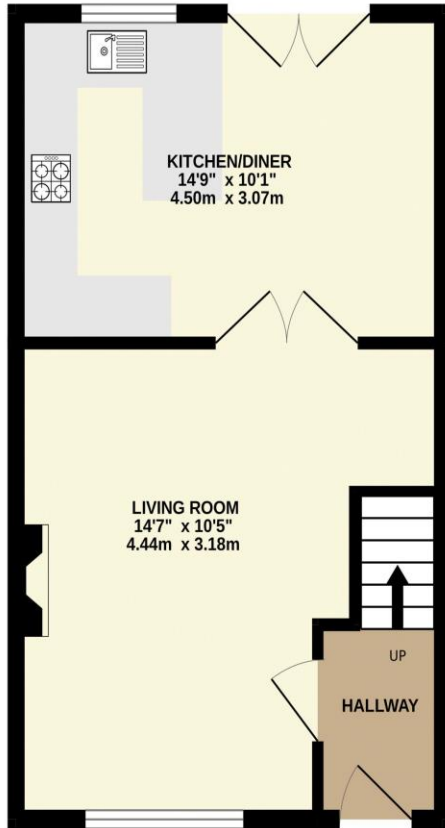
Tucked away in a quiet cul-de-sac on the desirable fringes of Plympton, this beautifully maintained three-bedroom end-terraced home offers the perfect blend of comfort, practicality, and location. Built by Wimpey approximately 30 years ago, the property has been lovingly cared for by its original owner, presenting a rare opportunity to acquire a truly cherished family home. The welcoming entrance hall leads into a spacious and inviting living room, ideal for relaxing or entertaining. Double doors open through to a bright and sunny kitchen/diner at the rear, fitted with stylish modern units and integrated oven and hob. From here, further double doors provide seamless access to the south-facing garden, allowing natural light to flood the space. Upstairs, the first-floor landing gives access to three well-proportioned bedrooms. Both principal bedrooms benefit from built-in wardrobes, while the second bedroom features a cleverly designed fold-down double bed, offering excellent versatility for guests, home working, or family living. Additional benefits include gas central heating from a regularly serviced boiler (approximately four years old) and uPVC double glazing throughout. Externally, the property boasts a delightful south-facing rear garden, perfect for enjoying sunny days. A patio seating area provides an ideal spot for outdoor dining, while the remainder of the garden is thoughtfully arranged with raised beds for flowers, shrubs, and even vegetables. To the front, a driveway offers off-road parking for up to three vehicles. Situated in a highly sought-after location with easy access to Plympton town centre and well-regarded local schools, this home is perfectly suited for families and those seeking a peaceful yet convenient setting.

Need A Mortgage?

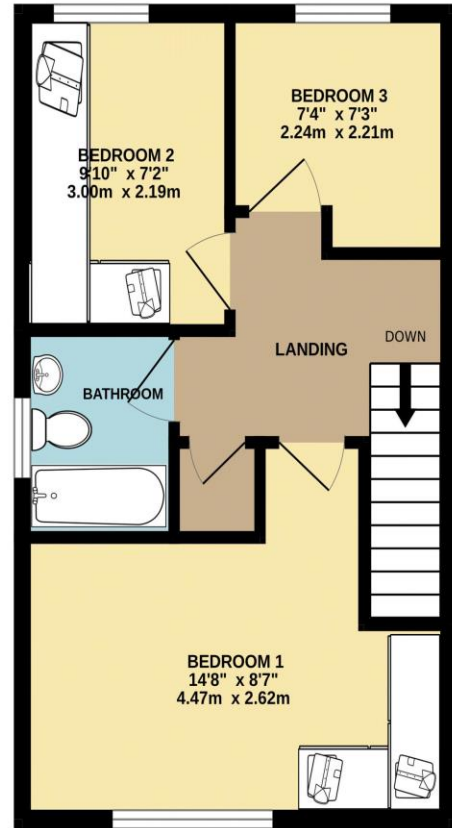
Don't pay more than you need to for your mortgage advice:
ours is only £195 paid when you move!

Floor Plans

GROUND FLOOR
361 sq.ft. (33.6 sq.m.) approx.



1ST FLOOR
364 sq.ft. (33.8 sq.m.) approx.



TOTAL FLOOR AREA: 725 sq.ft. (67.4 sq.m.) approx.
Made with Metropix ©2026



Fixed Price Conveyancing

A complete solution from just £600 with No sale – No Fee



We have not tested any apparatus, equipment, fixtures and fittings or services and so cannot verify that they are connected, in working order or fit for the purpose. Neither have we had sight of the legal documents to verify the Freehold or Leasehold status of any property; or sight of any consents, including Planning Permissions, building Regulations and Breaches of Covenants that may be required for alterations to the property. A buyer is advised to obtain verification from their Solicitor and/or Surveyor. Items shown in photographs are NOT included unless specifically mentioned within the Sales Particulars. Any floor plans on these details are not drawn to scale and are intended for guidance only

Falcon Property is an Introducer to Bradleys Financial Management Ltd. They are appointed representatives of Sesame Ltd who are authorised and regulated by the Financial Services Authority. Bradleys do not charge for mortgage advice, however a fee paying option is available. Typical fee is £195. Bradleys Financial Management: 16 Mannamead Road, Mutley, Plymouth, PL4 7AA

Your home may be repossessed if you do not keep up repayments on your mortgage.

