



Price
£575,000

Freehold

3x  2x  1x 

**Tintern Road,
Carshalton, Surrey, SM5**

OVER 60?

Secure this property
for up to **59% less!**

cubitt & west
Helping you move forwards

Accommodation

GROUND FLOOR

Entrance Hall

Living Room: 14'0 maximum x 13'4 (4.27m x 4.07m)

Kitchen/Breakfast Room: 16'5 x 16'4 (5.01m x 4.98m)

Utility Room: 6'9 x 6'1 (2.06m x 1.86m)

Shower Room

FIRST FLOOR

Landing

Bedroom 2: 14'2 x 10'2 (4.32m x 3.10m)

Bedroom 3: 10'1 x 8'2 (3.08m x 2.49m)

SECOND FLOOR

Landing

Bedroom 1: 15'8 maximum, into eaves x 10'8 (4.78m x 3.25m)

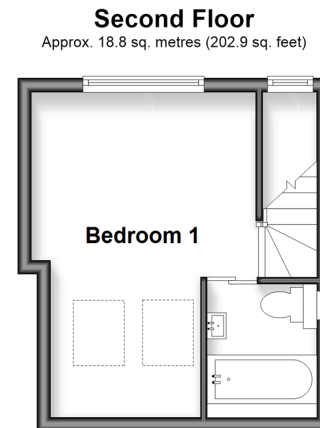
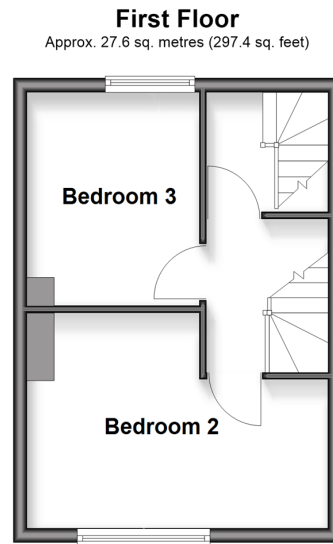
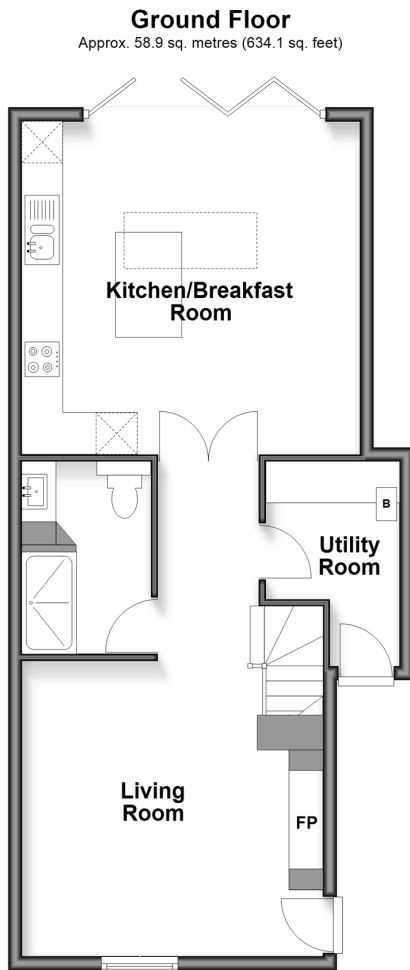
En-Suite Bathroom

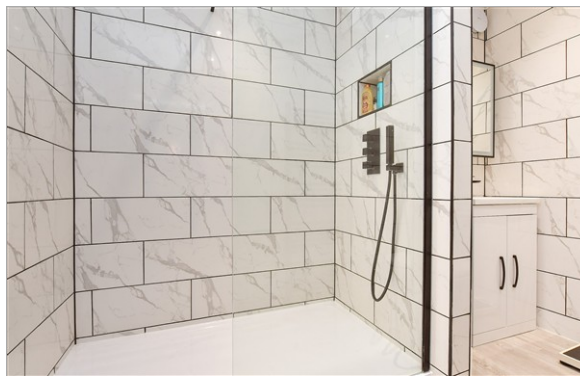
OUTSIDE

Driveway

Rear Garden

Summer House





Main features

- Extended family home presented in immaculate condition throughout
- Arranged over 3 floors
- Spacious lounge, open-plan kitchen/breakfast room and separate utility room
- Within easy reach of popular schools, local amenities and public transport
- Driveway for 2 cars and landscaped rear garden



Nearest Schools

Primary: Tweeddale Primary 0.3 miles, All Saints Benhilton CofE Primary 0.7 miles, Green Wrythe Primary 0.8 miles

Secondary: Wandle Valley School 0.4 miles, Carshalton Boys Sports College 0.5 miles



Transport Information

Train Stations: St Helier 1.1 miles, Hackbridge 1.1 miles, Morden South 1.2 miles



Address

Tintern Road, Carshalton, Surrey, SM5



Directions

For directions to this property please contact us.



cubitt&west
Helping you move forwards

Call Wallington Branch 020 8647 0011 ■ [cubittandwest.co.uk](https://www.cubittandwest.co.uk)



- Legal advice should be taken to verify fixtures/fittings, planning, alterations and/or lease details
- Appliances & services are untested, dimensions are approximate and floor plans are not to scale
- Through a Homewise Home For Life Plan people aged 60+ can secure this property for up to 59% less, by purchasing a Lifetime Lease

EPC RATING	CURRENT:	POTENTIAL:
	D(63)	B(32)

22115296/20260207/GG/DK