



16 Sandford Road, Beeston

Guide Price £440,000

🛏️ 4 🚿 2 🚗 2



- Detached New Build Family Home
- Dining Kitchen
- Master Bedroom with En-Suite
- Family Bathroom
- Enclosed Gardens
- Lounge and Study
- Utility and Downstairs WC
- Three Further Bedrooms
- Garage and Driveway Parking
- Energy Efficient Home





Approximate Gross Internal Area = 123.80 sq.m / 1333 sq.ft

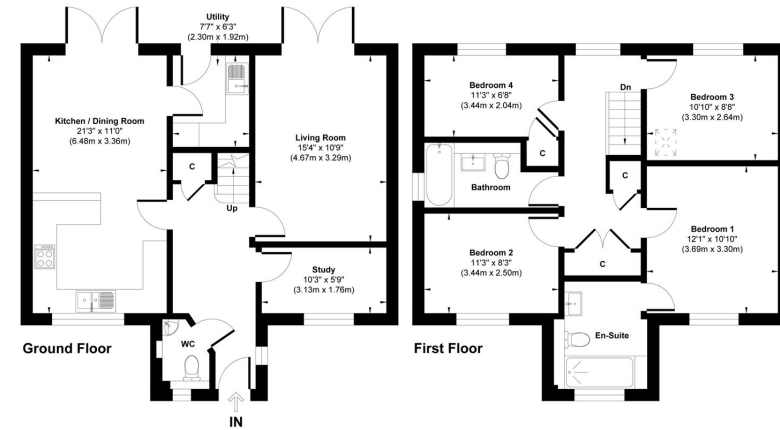
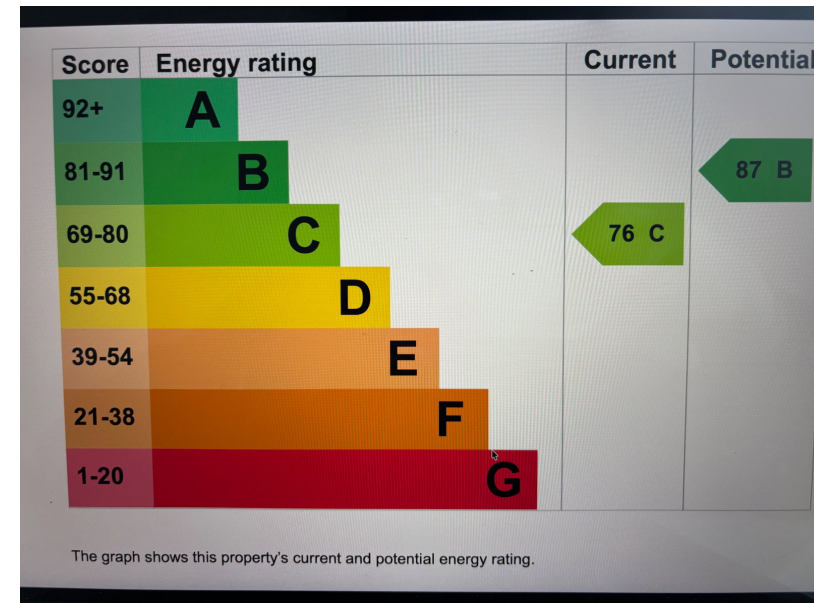


Illustration for identification purpose only, measurements approximate and not to scale.

LW0001

A stylish new-build four-bedroom detached home designed for modern family living. This beautifully finished property offers a spacious layout, featuring a bright living room, study and a contemporary open-plan kitchen/dining area with integrated appliances and sleek finishes. Upstairs includes four generous bedrooms, with a master en-suite and a modern family bathroom. The home also benefits from a ground floor WC, utility room, and excellent storage throughout. Externally, there is a private rear garden ideal for relaxing or entertaining, along with off-road parking and an integral garage. Located in a popular area of Beeston, the property is close to local amenities, schools, and transport links, making it perfect for families and professionals alike. A superb opportunity to own a high-quality, energy-efficient new home ready to move into.



INFO@SIGNATUREPROPERTYPARTNERS.CO.UK

WWW.SIGNATUREPROPERTYPARTNERS.CO.UK