



11 Circus Road West London

An unfurnished, two double bedrooms and two bathroom apartment to rent. Benefitting from stylish design and finish with a modern fitted kitchen that comes complete with fully integrated appliances and the bespoke designed bathrooms that exude luxury.

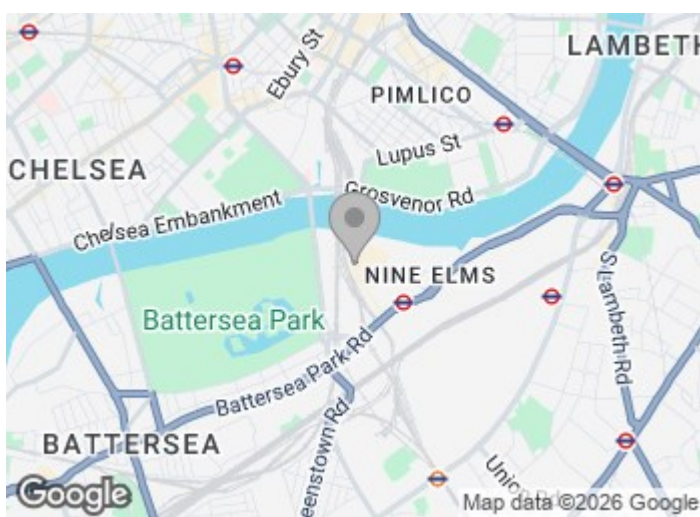
In an aim to offer the epitome of city living this iconic development boasts a selection of vibrant shops, restaurants and leisure spaces all on the doorstep of its residents. Dawson House is located in the West phase of the complex ideally situated for the River Thames, Chelsea, Battersea Park and local tube and rail stations.

£975 Per Week

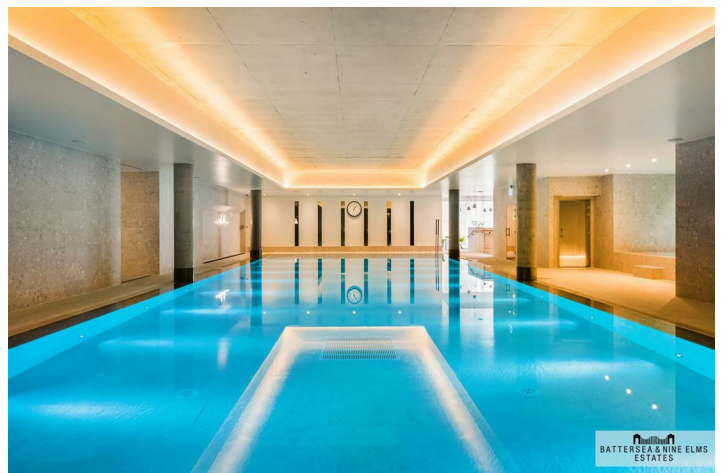
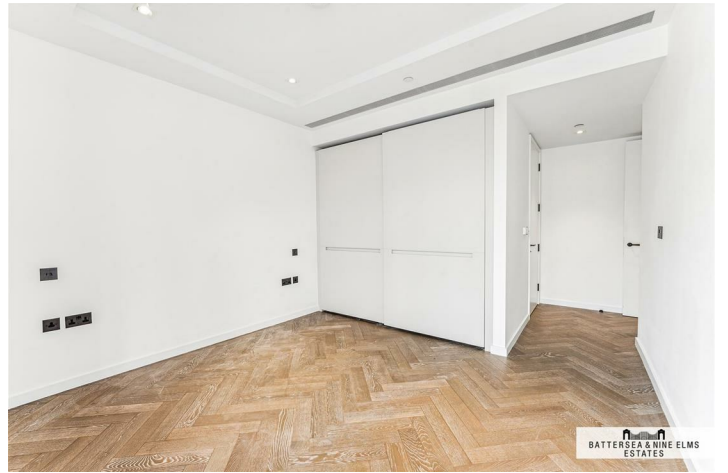
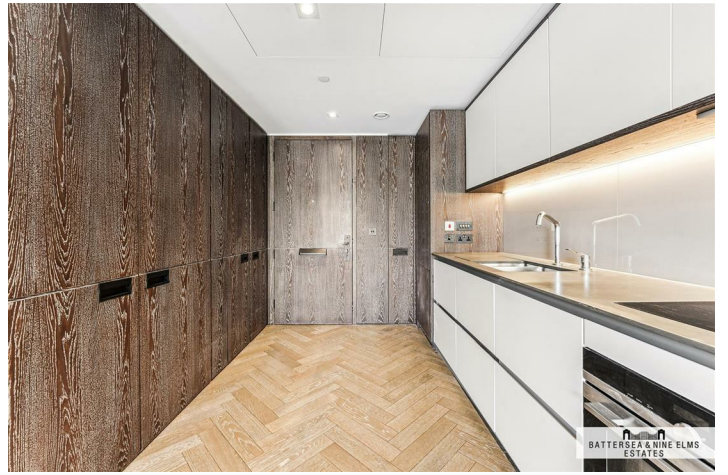
11 Circus Road West London



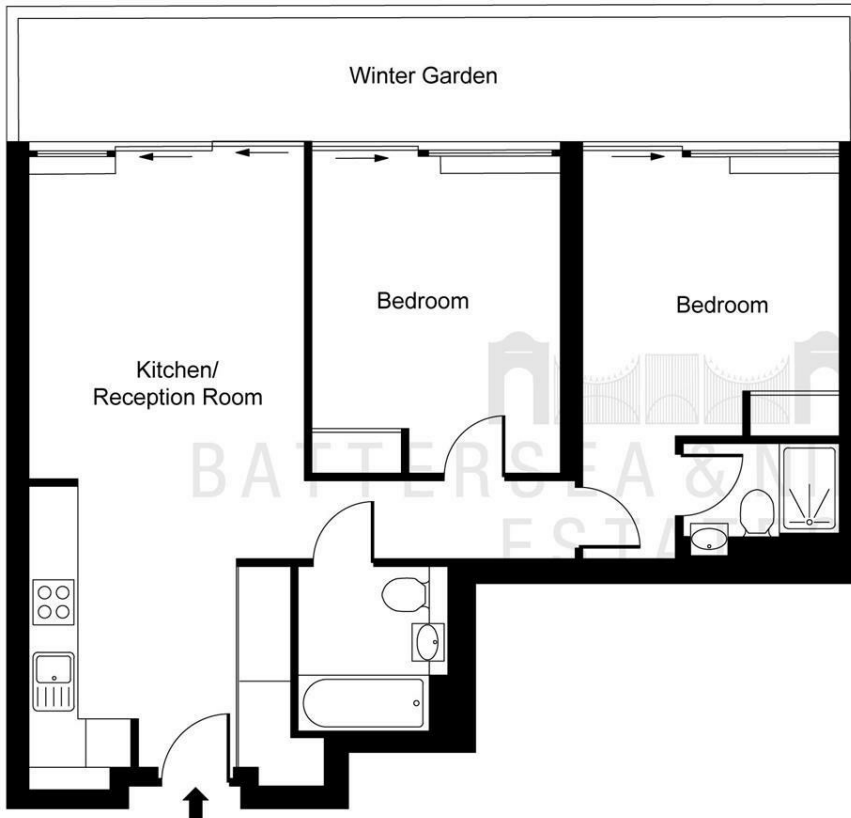
- Unfurnished
- Residents cinema suite
- 24 Hour Concierge
- Residents lounge & library
- Zone 1 transport links
- Residents gym & swimming pool
- Iconic Riverside Development



[Directions](#)



Floor Plan



Dawson House, Battersea Power Station, SW8

Net Saleable Area
73.40 sq m / 790 sq ft
Winter Garden
17.20 sq m / 185 sq ft

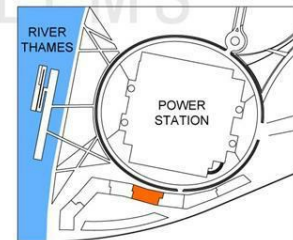


ILLUSTRATION FOR IDENTIFICATION PURPOSES ONLY
ALL MEASUREMENTS AND AREA FIGURES SUPPLIED BY OTHERS. ACCURACY IS NOT GUARANTEED.
THIS PLAN MUST NOT BE REPRODUCED BY ANY OTHER PERSON WITHOUT PERMISSION

These particulars, whilst believed to be accurate are set out as a general outline only for guidance and do not constitute any part of an offer or contract. Intending purchasers should not rely on them as statements of representation of fact, but must satisfy themselves by inspection or otherwise as to their accuracy. No person in this firm's employment has the authority to make or give any representation or warranty in respect of the property.

