



Tangley Grove, SW15

£215,000

Two double bedroom purpose built apartment with fantastic views overlooking Richmond Park available for sale to cash buyers only.

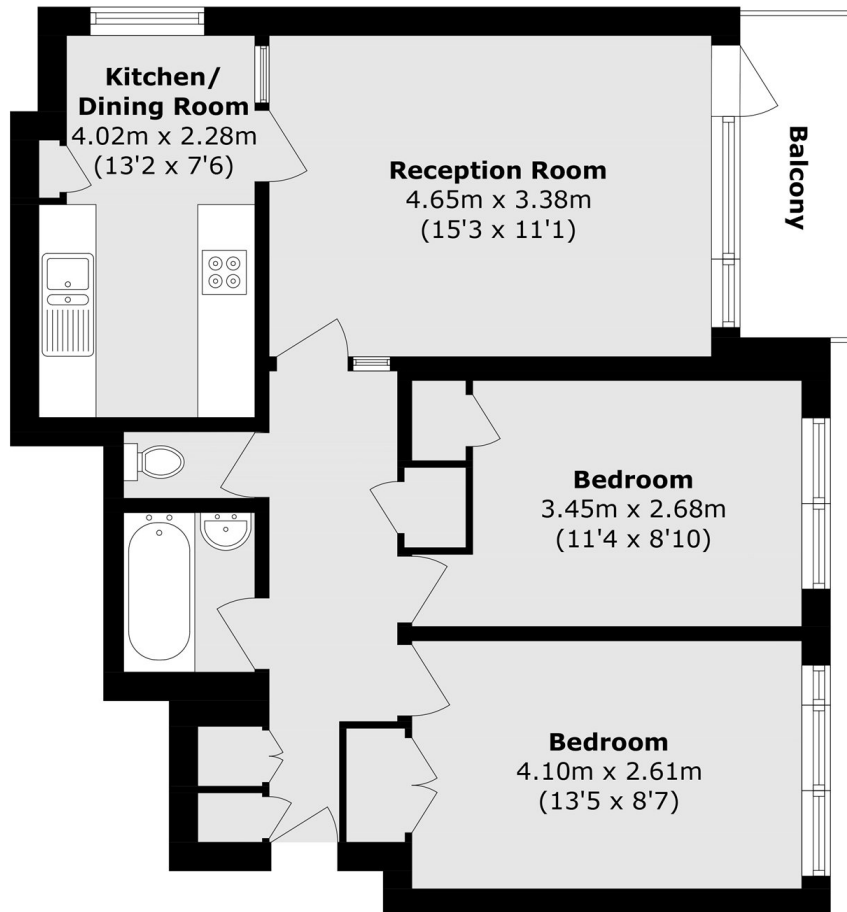
Tangley Grove is enviably located close to Richmond Park and close to Roehampton which has a lovely cobbled High Street with a selection of shops, bars and restaurants nearby.

(*These photos have been virtually staged, please rely on the floorplan and your own measurements regarding exactly how furniture would fit in each room)

Features

Cash Buyers Only
653 Sq Ft
Separate Kitchen
Balcony
No Chain
Good Condition

Tangley Grove, London, SW15



Total area (approx.): 60.7 sq. m (653.4 sq. ft)
Balcony area (approx.): 4.1 sq. m (44.1 sq. ft)