



jordan fishwick

Hayfield Road Birch Vale High Peak



Hayfield Road Birch Vale High Peak SK22 1DA

£525,000



The Property

**** UNDER OFFER **** Boasting incredible views to three sides, a substantial, stone-built FOUR DOUBLE-BEDROOM end of terrace. Located in Birch Vale, ideal for New Mills and Hayfield Village, this spacious, proper family home is perfect for many. In addition to the amazing property is a detached outbuilding which offers scope for a multitude of uses. Previously an office, studio and workshop with fantastic views, it's own wc and charming mezzanine. The property has a wealth of features and it warmed by gas central heating, complimented by double glazing. Private gardens with raised beds, ample off road parking with a garage area and comprising: entrance hall, wc, living room, sitting room, breakfast kitchen with island, dining room, four generous bedrooms and a family bathroom with separate shower. Viewing highly recommended.



- Stunning Views to Three Sides
- Adjoining Open Farmland
- Imposing Double Fronted End Of Terrace
- Four Double Bedrooms
- Useful Outbuilding With Garage/Workshop/Office/WC
- Potential Additional Accommodation
- Private Gardens, Ample Driveway Parking
- Spacious Versatile Accommodation
- Wealth Of Features

Postcode

SK22 1DA

EPC Rating

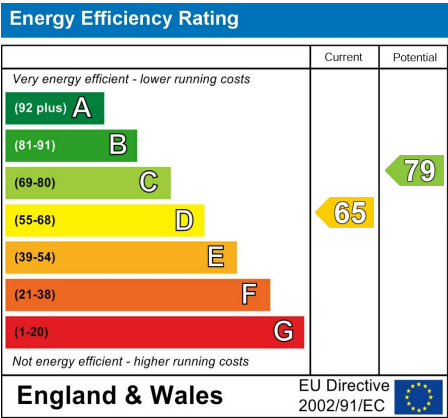
D

Local Authority

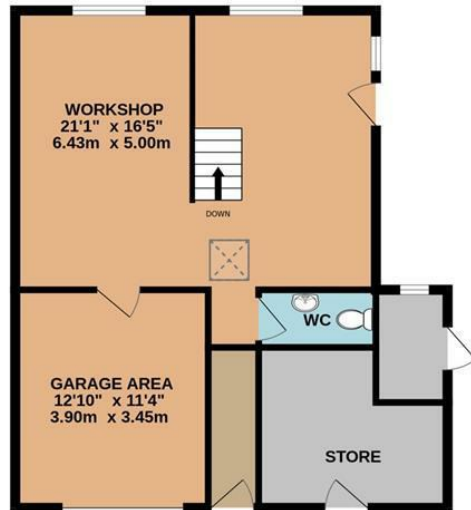
High Peak

Council Tax

C



GROUND FLOOR



1ST FLOOR



Whilst every attempt has been made to ensure the accuracy of the floorplan contained here, measurements of doors, windows, rooms and any other items are approximate and no responsibility is taken for any error, omission or mis-statement. This plan is for illustrative purposes only and should be used as such by any prospective purchaser. The services, systems and appliances shown have not been tested and no guarantee as to their operability or efficiency can be given.
Made with Metropix ©2025



These particulars are believed to be accurate but they are not guaranteed and do not form a contract. Neither Jordan Fishwick nor the vendor or lessor accept any responsibility in respect of these particulars, which are not intended to be statements or representations of fact and any intending purchaser or lessee must satisfy himself by inspection or otherwise as to the correctness of each of the statements contained in these particulars. Any floorplans on this brochure are for illustrative purposes only and are not necessarily to scale.

Offices at: Chorlton, Didsbury, Disley, Hale, Glossop, Macclesfield, Manchester Deansgate, Manchester Whitworth Street, New Mills, Sale, Wilmslow and Withington

14 Market St, Disley, Cheshire, Stockport SK12 2AA

01663 767878

disley@jordanfishwick.co.uk

www.jordanfishwick.co.uk