

Smithy Close, Saltash, PL12 4PL

Guide Price £235,000

3 1 1



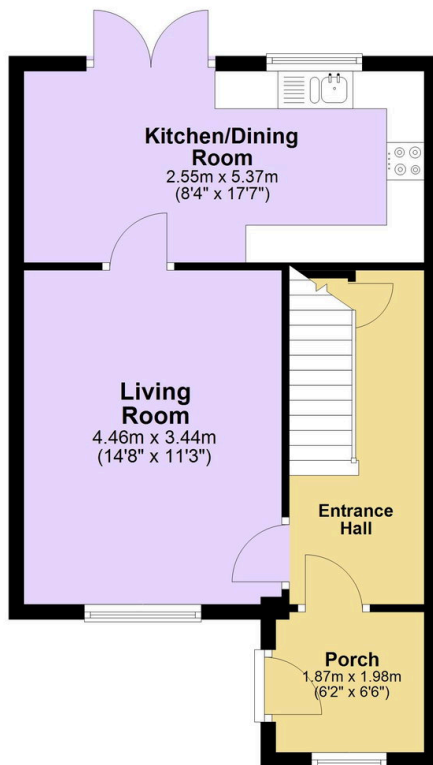
Upon entering, you are welcomed into the handy porch, which leads to the spacious entrance hall. The bright and airy living room flows seamlessly into the modern kitchen/diner, creating an inviting space for both relaxation and entertaining. Upstairs, the property features three well-proportioned bedrooms and a roomy landing; the master benefits from far-reaching views and built-in Hammond wardrobes. A generously sized family bathroom serves all bedrooms, ensuring comfort and ease of use. The home is not short of storage, with a large cupboard on the landing, built-in storage in the third bedroom and an understairs cupboard. Externally, the property boasts a lovely, level garden which is mainly patio, featuring a lawn and a charming decked area. Communal parking is available, adding to the practicality of this charming home.

Key Features

- Freehold - Council Tax Band B - EPC TBC
- Three Well-Proportioned Bedrooms
- Bright & Airy Living Room
- Level Rear Garden
- Communal Parking
- Delightful Terraced Home
- Handy Porch & Entrance Hall
- Modern Kitchen/Diner
- Spacious Family Bathroom
- Quote BH0675 To Book Your Viewing Today

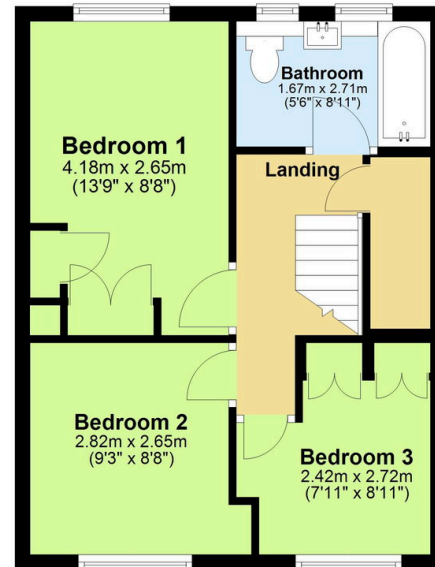
Ground Floor

Approx. 41.9 sq. metres (451.3 sq. feet)



First Floor

Approx. 37.8 sq. metres (407.1 sq. feet)



Total area: approx. 79.8 sq. metres (858.4 sq. feet)