



Sutherland Road, Walthamstow, London

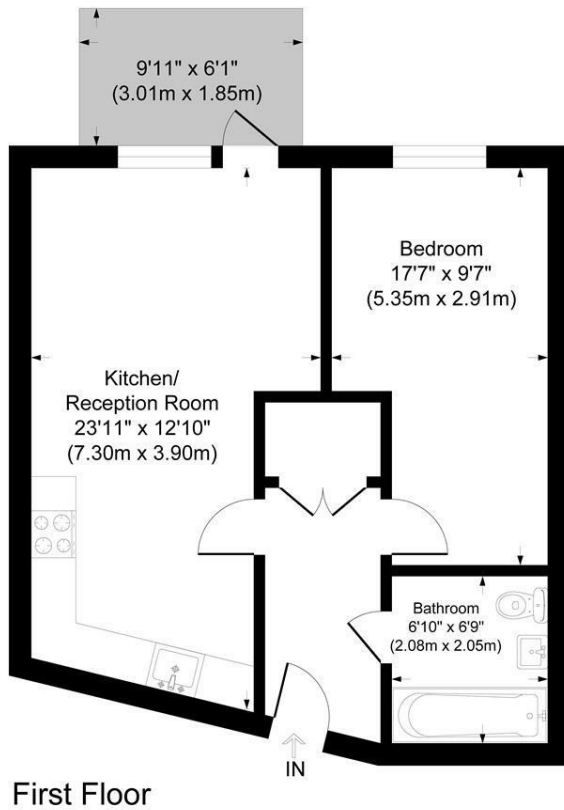
Set on the first floor of this well presented modern development is this spacious one bedroom flat just moments away from Blackhorse Road Station.

The property features a spacious open-plan living and kitchen area, providing an ideal space for both relaxing and entertaining, with direct access to a private balcony. The generous double bedroom offers ample room for wardrobes and additional storage, while the modern family bathroom is finished to a high standard with a stylish three-piece suite.

Perfectly suited to first-time buyers, professionals or investors, this attractive apartment combines practical living space with modern design in a convenient commuting location.

- Well Presented One Bedroom Flat
- 0.6m to Blackhorse Road Station
- Close to Walthamstow Wetlands
- Open Plan Living And Kitchen Space
- Popular Modern Development
- Council Tax - B
- EPC- B
- 551 Sq Ft (51.2 Sq M)

£350,000



Taylor House, Sutherland Road

Approximate Gross Internal Area
Total = 51.2 sq m / 551 sq ft

This plan is for layout guidance only. Not drawn to scale unless stated. Windows and door openings are approximate. Whilst every care is taken in the preparation of this plan, please check all dimensions, shapes and compass bearings before making any decisions reliant upon them.

powered by:

THE360IMAGE
www.the360image.co.uk

Energy Efficiency Rating		Current	Potential
Very energy efficient - lower running costs			
(92 plus) A			
(81-91) B			
(69-80) C			
(55-68) D			
(39-54) E			
(21-38) F			
(1-20) G			
Not energy efficient - higher running costs			
England & Wales		82	82
	EU Directive 2002/91/EC		

Environmental Impact (CO ₂) Rating		Current	Potential
Very environmentally friendly - lower CO ₂ emissions			
(92 plus) A			
(81-91) B			
(69-80) C			
(55-68) D			
(39-54) E			
(21-38) F			
(1-20) G			
Not environmentally friendly - higher CO ₂ emissions			
England & Wales			
	EU Directive 2002/91/EC		