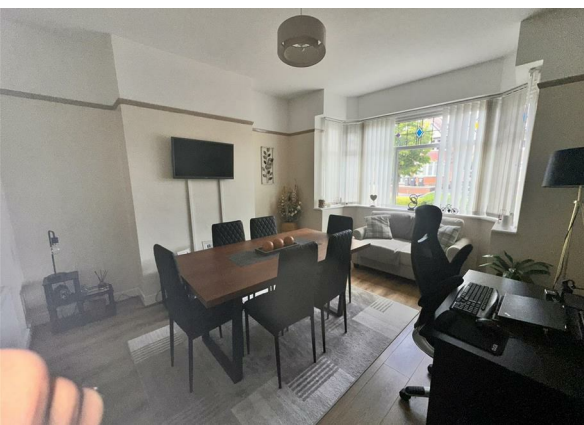


**Beverley Court Road, Quinton, B32 1HD**

**Offers Around £365,000**

**Council Tax Band: B**





3-Bedroom Family Home – Beverley Court, Quinton

Nestled in a quiet and sought-after area, this spacious three-bedroom property on Beverley Court, Quinton offers a fantastic opportunity for families or buyers seeking a comfortable and versatile home in a popular residential area.

Ground Floor:

Two generous reception rooms, ideal for family living and entertaining

Well-equipped kitchen with plenty of storage and workspace

Practical utility room with additional access to the garden

Integrated garage, offering further storage or parking potential

First Floor:

Three well-proportioned bedrooms, perfect for families or home working

Bright family bathroom with three-piece suite



Open House Edgbaston



Energy Efficiency Rating		
	Current	Potential
<i>Very energy efficient - lower running costs</i>		
(92 plus) <b>A</b>		
(81-91) <b>B</b>		
(69-80) <b>C</b>		
(55-68) <b>D</b>	64	
(39-54) <b>E</b>		
(21-38) <b>F</b>		
(1-20) <b>G</b>		
<i>Not energy efficient - higher running costs</i>		
<b>England &amp; Wales</b>	EU Directive 2002/91/EC	